

# Model 460SJ

TELESCOPIC BOOM LIFT



## ENVIRONMENTALLY FRIENDLY

- Variable speed engine control for improved fuel efficiency reducing operation cost.

## POWER AND PERFORMANCE

- 270 kg basket capacity vs 230 kg before allowing you to carry more tools or materials to stay on the job longer.

## MORE ACCESS

- 360 degrees continuous rotation for an increased work envelope.

## GREATER STRENGTH

- DuraTough hood material for less maintenance and increased strength reducing TCO.



## Standard Features

- 180 Degree Hydraulic Platform Rotator
- 0.91m x 1.83m (36 x 72in) Platform
- Platform Console Machine Status Light Panel\*
- AC cable to Platform
- 5 Degree Tilt Alarm/Indicator Light
- Swing Out Engine Tray
- 12V-DC Auxiliary Power
- Hourmeter
- Improved Multi-Function Controls
- Proportional Controls
- Interactive Display at Ground Controls
- Control ADE® System
- Lifting/Tie Down Lugs
- Horn
- Four-Wheel Hydrostatic Drive
- Oscillating Axle
- Motion Alarm
- Glow Plugs (Diesel Engines)

\* Provides indicator lights at platform control console for system distress, low fuel, 5 degree tilt light, and foot switch status.

## Standard Specifications

Power Source	
• Diesel Engine	
Deutz D2.3 L3 Stage IIIA	36.4 kW
• Fuel Tank Capacity	83 L
Hydraulic Reservoir	
• Hydraulic Reservoir	136 L
• Auxiliary Power	12V-DC
Tyres	
• Standard	12 x 16.5 Foam-Filled Tyres
• Optional	12 x 16.5 Foam Filled Lug Tread Tyres
	14 x 17.5 Foam-Filled Tyres
	12 x 16.5 Foam-Filled, Non-Marking Tyres

## Accessories & Options

- Inward Self-Closing Swing Gate
- Platform 0.96m x 2.44m
- 13mm (1/2 in) Air Line to Platform
- Soft Touch System
- AC Generator
- Tow Package
- Flashing Amber Beacon
- Hostile Environment Kit
- Light Package
- Platform Worklights
- Special Hydraulic Oils (Consult Factory)
- Spark Arresting Muffler
- Operator Tool Tray
- Accessory Packages
- SkyPower® Package
- SkyWelder® Package
- SkyGlazier® Package
- Nite Bright® Package
- SkyGuard®
- PipeRack
- Euro plugs and sockets

Note: Some options may increase lead time, and some option combinations may not be available.

# Model 460SJ

## TELESCOPIC BOOM LIFT

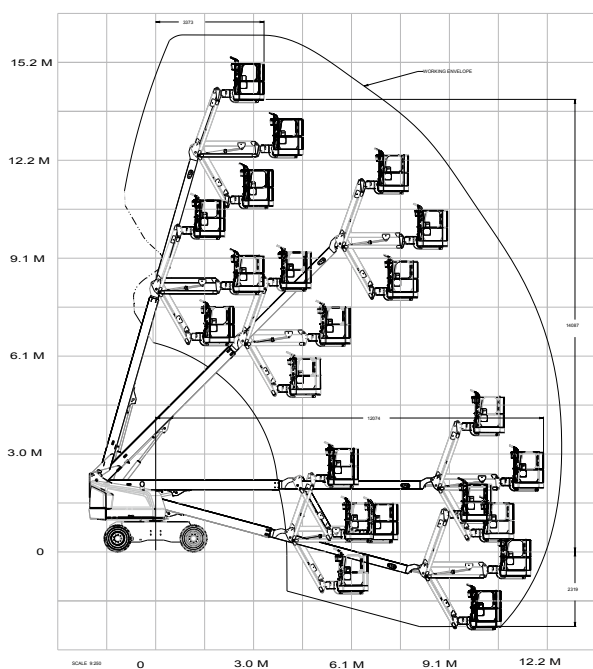
### Performance

• Working Platform Height	16.02 m
• Working Horizontal Outreach*	12.72 m
• Swing	360 Degrees Continuous
• Platform Capacity	
• Unrestricted	270 kg
• Platform Rotator	180 Degrees Hydraulic
• Range of Articulation	1.83 m
• 130 Degrees (+70, -60)	
• Weight	7,975 kg
• Max. Ground Bearing Pressure	5.13 kg/cm <sup>2</sup>
• Drive Speed	7.2 km/h
• Gradeability	45%
• Turning Radius	
Inside	2.0 m
Outside	4.84 m

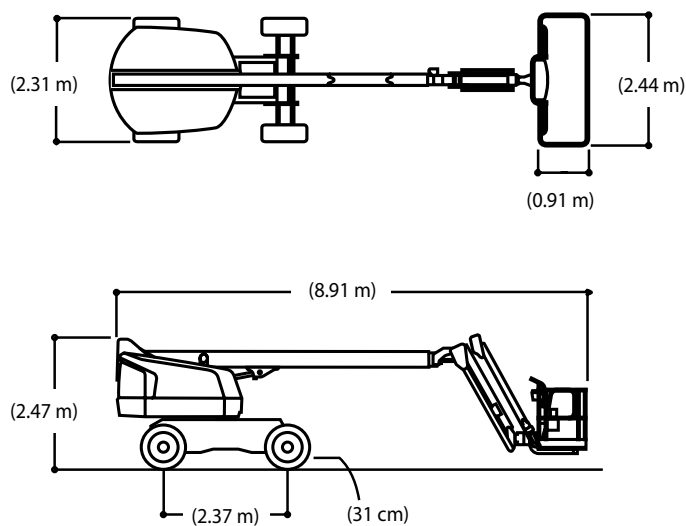
\*incl 0.65 cm arms length



### Reach Diagram



### Dimensions



### IMPORTANT

JLG is continually researching and developing products and reserves the right to make modifications without prior notice. All data in this document is indicative. Certain options or country standards will increase weight. Specifications may change to meet country standards or with the addition of optional equipment.

Due to continuous product improvements, JLG Industries reserves the right to make specification and/or equipment changes without prior notification.



### JLG EMEA BV

Polaris Avenue 63  
2132 JH Hoofddorp  
The Netherlands  
Tel: +31 (0)23 565 5665  
Fax: +31 (0)23 557 3750  
[www.jlg.com](http://www.jlg.com)

An Oshkosh Corporation Company