

ARBORIST

15-23 and 16-23

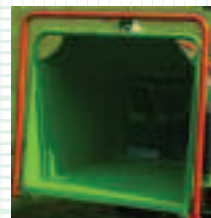
Standard features



Throat Size
A 150mm x 230mm (6 inch x 9 inch) 160mm x 230mm on 16-23 for easy feed of bushy brush



Hydraulic Feed Roller
All machines have twin rollers.



Large In-feed Chute
All machines have a large in-feed chute for easy loading



Control and Safety Bar
Top and side combined control and safety bar for much reduced nuisance tripping whilst fully HSE compliant



Mechanical Reset System
All machines have a reliable no fuss mechanical reset system for in-feed rollers, fully compliant with current HSE requirements



270-Degree Rotation on Discharge Chute
Allowing the discharge chute to be positioned to discharge in the safest place, (then repositioned for safe transport)



Folding In-feed Chute
For compact transport and fitting inside confined storage areas (not on 16-23)



Quality Paint
All machines have a 3 stage paint system which includes mechanical preparation, a high zinc primer and a top coat, finished in a low bake oven.

SPECIFICATIONS

	15-23			16-23
	26hp diesel	34hp turbo diesel	27hp petrol	35hp diesel
Chipping Flywheel	500mm x 25mm			500mm x 25mm
Flywheel Speed	2400rpm			2400rpm
Disc-Blades	4			4
In-feed Chute Opening	920mm x 820mm			920mm x 820mm
In-feed Chute Height	580mm			580mm
Feed Rollers	Twin			Twin
Roller Size	230mm x 180mm			230mm x 180mm
In-feed Control	No Stress			No Stress
Drive	Direct belt drive			Direct belt drive
Hour Meter	Standard	Option		Standard
Discharge Chute	120mm dia 270° rotation			120mm dia 270° rotation
Fuel Tank Capacity	30 lts			30 lts
Hydraulic Tank Capacity	40 lts			40 lts
Locking Tow Hitch	Option			Option
Brakes	Option	Standard	Option	Standard
Tyre Size	155R12			165RX3
Wheel Chocks	Standard unbraked	Not available	Standard unbraked	Not available
Safe-Trak System	No	No	No	Yes
Length (Working) (Transit)	3780mm 3360mm		3260mm 2995mm	3630mm
Width	1270mm			1375mm
Height	2340mm			2270mm
Weight	800Kg	750Kg	600Kg	850Kg

KEY FEATURES

- 150mm x 230mm capacity (160 x 230 on 16-23) ■ 26 hp diesel, 34hp turbo diesel and 35hp or 27hp petrol engine
- Twin hydraulic feed rollers
- Twin spherical roller main bearing mounted in the flywheel ■ No-Stress in-feed control ■ Disc-Blade chipping technology
- Folding in-feed chute (not on 35hp 16-23) ■ From under 750kg in weight



ARBORIST

Green Mech Ltd
A Turner Company

Engineering for a greener environment

The Mill Industrial Park, Kings Coughton, Alcester, Warwickshire B49 5QG.

Tel: +44(0) 1789 400044. Fax: +44(0) 1789 400167.

E-mail: sales@greenmech.co.uk www.greenmech.co.uk

We reserve the right to change or modify specification without notice.



THE QUEEN'S AWARDS
FOR ENTERPRISE:
INTERNATIONAL TRADE
2005

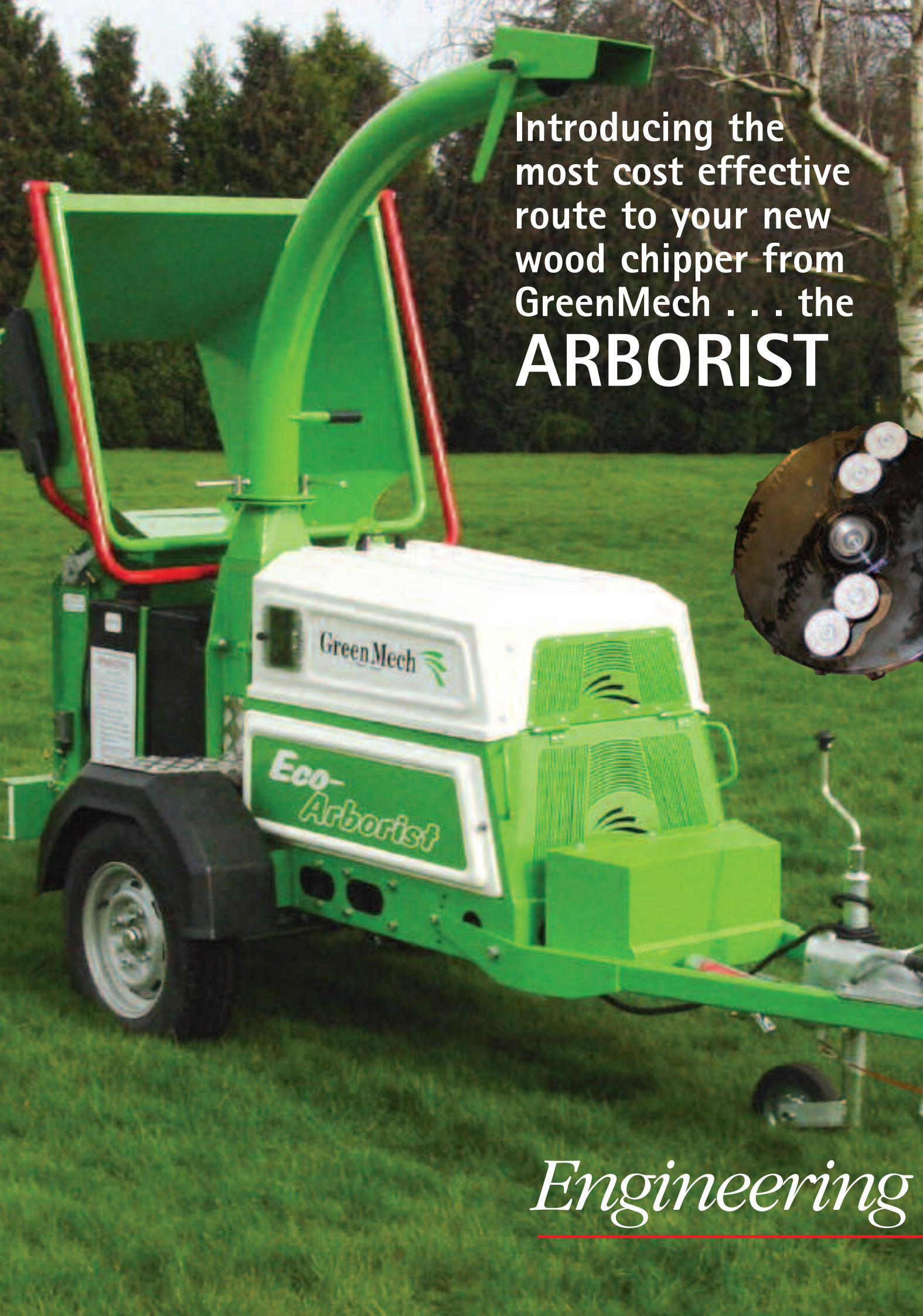
Designed and Printed by Peridot: 01789 762519.

The Arborist 15-23 & 16-23 Range

NO ORDINARY CHIPPER – BIG ON FEATURES

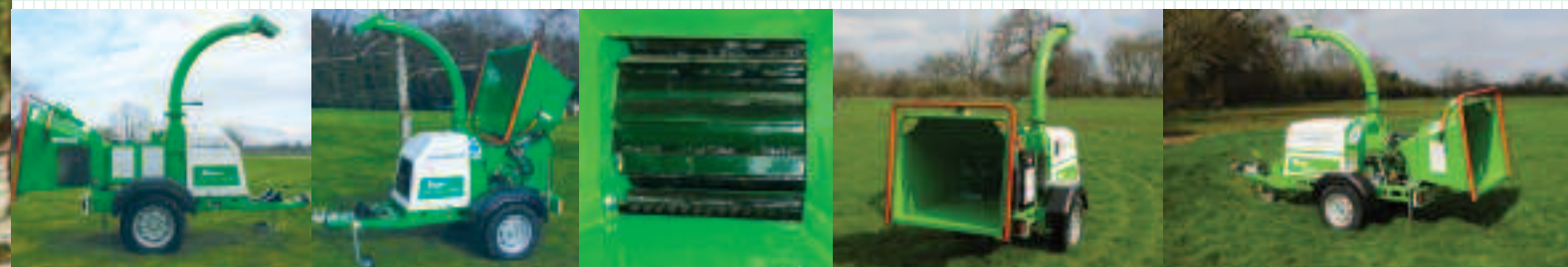
Green Mech Ltd
A Turner Company

engineering for a greener environment



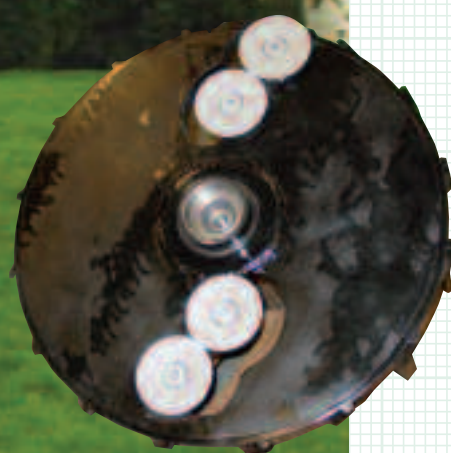
Introducing the most cost effective route to your new wood chipper from GreenMech . . . the **ARBORIST**

All the right features at a user friendly price

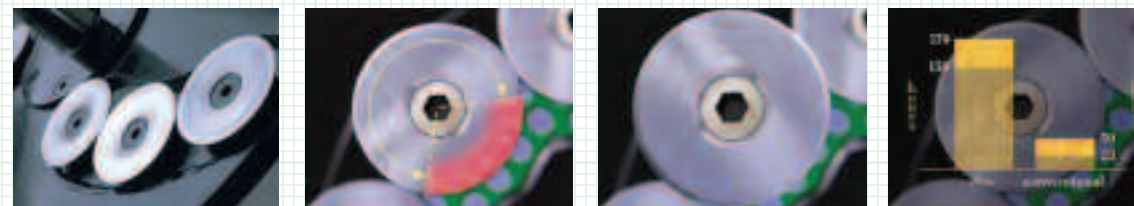


GreenMech has designed the most cost effective range of chippers - the Arborist 15-23 and 16-23. A 6 inch (150mm) capacity machine with either a 26hp diesel (option 34hp Turbo Diesel) or 27hp petrol engine, twin rollers, No-Stress in-feed control, 230mm (9 inch) wide rollers with 150mm x 230mm (6 inch x 9 inch) throat, enabling awkward material to be easily processed. A unique design allows a convenient in-feed height with a top & side control safety bar, eliminating most nuisance tripping whilst being fully HSE compliant. Equipped with

a folding in-feed chute for compact transport and fitting inside confined storage areas. Road towable, under the 750kg limit even with a braked chassis and 34hp Turbo Diesel engine, it is the great adaptability that makes the Arborist range unique in the wood chipper field - with a wide range of specifiable options you can tailor the Arborist 15-23 to suit your budget. Also available as a Arborist 16-23 with 160mm x 230mm infeed throat, twin feed rollers and braked chassis, non folding infeed chute and 35hp water cooled diesel engine.



The revolutionary 'Disc Blade' chipping system



The 'Disc-Blade' system with its slicing action as opposed to chopping is 3dB quieter than conventional straight blades. These figures have been obtained using the recognised standard noise tests for Wood Chippers.

When the Disc-Blades are used only a 1/3 of the circumference is in use as shown, hence, the blades can be turned to the next sharp section when the sharpness has gone off. As you can see this allows the blades to be turned before they need to be re-sharpened.

By loosening the retaining bolt the Disc-Blades can be rotated in either direction. If damage occurs to the blade through insertion of contaminants i.e. stones, nails etc, the damaged section can be simply positioned away from the cutting area.

Conventional straight blades are more susceptible to damage and will need to be replaced. When sharpened and refitted the distance between the anvil and blade needs to be adjusted for straight blades. Not on Disc-Blades as they are sharpened from the rear and the front face does not alter.

Engineering for a greener environment

ARBORIST
15-22MT34TP and
16-23MT35

Chipping System

Arborist Models, all with Disc-Blade Chipping Technology



Arborist 15-23 Petrol
A 6 x 9-inch (15cm x 23CM) chipper with 27hp petrol engine; No Stress Power Control; Twin Hydraulic Feed Rollers; optional Braked Chassis



Arborist 15-23 Diesel
A 6 x 9-inch (15cm x 23CM) chipper with 26hp diesel engine; No Stress Power Control; Twin Hydraulic Feed Rollers; optional Braked Chassis



Arborist 15-23 Turbo
A 6 x 9-inch (15cm x 23CM) chipper with 34hp turbo diesel engine; No Stress Power Control; Twin Hydraulic Feed Rollers; Braked Chassis and under 750Kg



Arborist 16-23 Diesel
A heavy duty 6.5 x 9-inch (16cm x 23CM) chipper with 35hp diesel engine; No Stress Power Control; Twin Hydraulic Feed Rollers and Braked Chassis

