

H.A.B Model T 24 D4WD K2

Features

- Octagonal boom design for stability
- Large ground clearance
- Excellent terrainability
- Unlimited horizontal outreach
- Driveable in full height
- Extraordinary serviceability
- User-friendly control system

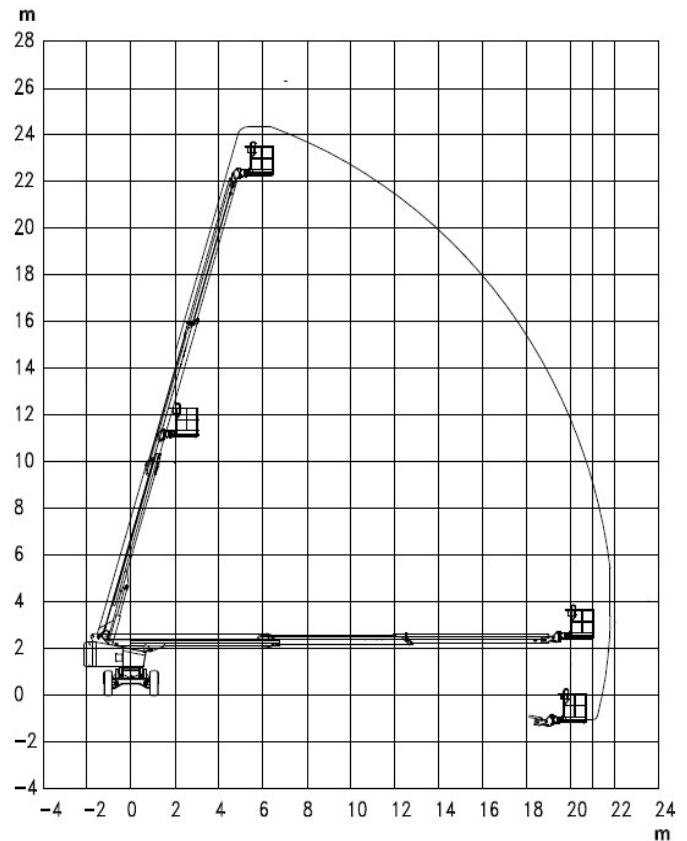
Technical Features

Working height	24.30 m
Platform height	22.30 m
Max. outreach	21.50 m
Slew round	360°
Platform size	2.0 m x 0.96 m
Platform rotation	+/- 80°
Max. tail swing	895 mm
Vertical jib rotation	-
Platform capacity	400 kg
Outer turning radius	7.38 m
Inner turning radius	1.94 m
Drive speed km/h	5.0 0.7
Drive system	Hydraulic
Engine	41 KW Deutz F4L 2011
Control	Proportional
Gradeability	45%
Wheelbase	2500 mm
Ground clearance	400 mm
Weight	19500 kg
Four-wheel drive	Yes
Oscillating axle	Yes

Transport Features

Stowed Height	2.65 m
Lenght	11.05 m
Width	2.47 m

*e=elevated; l=lowered



Transport Position

