



Loader Wagons





**Harvesting clean
forage for more
than 40 years**



All components receive a high-quality powdercoat finish for effective protection from corrosion and damage.



The feeder unit on the first forage wagon. This design cut harvest time to a tenth of the time previously required.



FAHR WE 300 L – FAHR's first forage wagon that set benchmarks at its time.

In the early days, our forage wagons were still red. In the early sixties, they were a common sight in Germany's forage growing regions. When FAHR began manufacturing forage wagons more than 40 years ago, our wagons were regarded as pioneers for cutting the time required for harvesting forage on a daily basis to nearly one tenth. Since that time, we have manufactured and exported more than 100,000 forage wagons to global markets. Many of these units are still out there working day in day out – giving testimony to what we mean when we speak of quality and dependability.

We listen

Our designers have developed countless innovative features together with our customers.

This interaction and cooperation has led to forage wagons that offer good value for money plus plenty of practical features.

Modern manufacturing

It goes without saying that our forage wagons are manufactured in modern production processes, where panels are cut to precision by semi-automated processes. Yet, despite high automation levels, all components are manufactured and assembled by small teams. After all, it is the commitment of our highly motivated staff and workforce that guarantees high-performance machinery for professional farmers. These machines are made for the single purpose of helping farmers and contractors save time and costs and provide clean forage for viable livestock farming.

Advantages

- More than 40 years of experience in the design and manufacture of forage wagons
- Full range of forage wagons offers nine models and capacities from 22 m³ to 50 m³ to suit any size of farming operation
- All models benefit from functional specifications and useful options to customize the machine to requirement
- High-quality build
- High resale value



Soon afterwards, FAHR introduced FAHR WE 310 L, the world's first forage wagon to feature a short chain elevator and cutting system.



A robust driveline and standard gauge wheels ensure effective and gentle crop collection.

Clean gathering





The roller crop guard is standard specification on all models from Feedex 300.



The RotoControl feed arms translate into clean crop feed and high throughput.

Full-width quality – powerful pick-up unit

The pick-up boasts five rows of tines, which are spaced at a narrow 56mm and which gently and cleanly pick up the crop from a width of up to 1.85m. The roller crop guard (standard feature from Feedex 300) ensures a smooth transfer of the material to the feeder unit. Oversized pneumatic 15" gauge wheels provide positive but gentle guidance to the tines on the torsionable and spring-loaded pick-up unit. Adjusted to an accurate height, the gauge wheels provide clean gathering without losses. The flexible double-spring tines are bolted to strong section tubes – a design that protects the tines from damage and effectively cuts out crop contamination.

RotoControl feeder unit

The Vicon RotoControl feeder unit pulls in the material with ease, providing maximum throughputs and crop protection. Four armcontrolled swing arms feed the material through the cutting system (five optional feeder arms on all models from Feedex 360). The doublefinger tines ensure positive crop feed and exceptionally light and precise cuts. The cuts are gentle in fresh daily forage or precise and short in silage. Up to 33 knives chop the crop at uniform 40mm lengths.

Blockages may be an occasional issue when the material is gathered from big swaths. No problem for the feeder unit, which lowers hydraulically for convenient and swift removal of blockages from the tractor cab. No need to leave the tractor. No time lost.

Quality of cut – just as you want it

The cutting system on Vicon forage wagons cuts the crop to a nominal 40mm for su-

perior quality. Fully lowered, the unit gives convenient access to all knives for regrinding in mounted position or easy removal as required.

Superior quality – gentle treatment of silage, hay and forage

Gentle treatment of hay, forage and wilted grass is one major plus for maintaining topquality forage. Minimizing losses and fragmentation as well as maintaining a healthy crop structure are key aspects for viable livestock farming.

Advantages

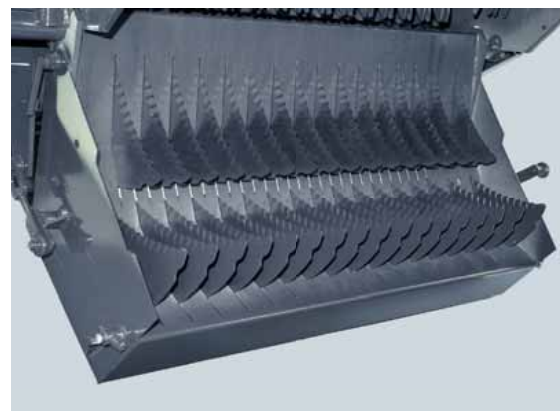
- The 1.85m pick-up unit collects the crop as cleanly as a rake
- Standard pneumatic 15" gauge wheels provide effective and gentle control even on rolling land
- Robust pick-up driveline for absolutely dependable operation
- A standard roller crop guard on all models from Feedex 300 guarantees a smooth flow of crop
- The RotoControl feeder unit ensures maximised throughputs
- The cutting system features 33 knives that are individually impact protected and give 40mm cuts



Service made easy – all grease points are grouped in a bank.



The RotoControl feeder tines ensure an optimum crop collection from any type of swath.



The entire cutting system lowers for quick knife replacement.



A heavy-duty hydromotor drives the chain-and-slat conveyor to empty the wagon within a few seconds.

Heavy-duty design



Comfort-ride chassis and wide flotation tires provide ultimate turf protection.



The hydraulic artic drawbar provides a 600mm ground clearance for ultimate stability on the clamp.



An access door is standard specification on Feedex 422.



Smooth interior sides guarantee positive crop feed to the rear.

Rigid and robust

The chassis and stanchions on the all-steel superstructure are made from U-channel steel to operate in the most difficult conditions. Hoops were added to eliminate any risk of torsion on the fully loaded wagon. High-quality steels and a hard-wearing powder-coat finish translate into durable quality requiring minimum maintenance. The bodies feature useful details to suit specific applications. The tailboard, for example, offers hydraulic control and fill-level indicators help fill the wagon to full capacity.

Stability in silage making

The Vicon forage wagons have proven their worth in heavy silage making, too, thanks to smooth interior walls, sturdy headboards and tightly shutting tailboards that prevent the loss of chopped material. The upgraded headboard prevents the wagon from bouncing and feeds the material gently to the rear of the machine. The all-steel body with special-design sides (access door is standard on

Feedex 422) and massive stanchions distributes the stress evenly across the U-channel steel frame.

Stability on the clamp and on the road

Boasting track widths of up to 1.80 m and running on 500” tyres and spring-loaded pivoting tandem axles that ensure uniform weight distribution on all four wheels at all times, these wagons tick all boxes for chassis stability and ride comfort. Stability is essential to protect the turf, particularly in wet conditions, and ensures safe travel on the road. Designed to travel at maximum speed and equipped with air braking and automatic brake power control, these are machines of choice for contractors and mid-sized livestock farmers.

Higher ground clearance

The articulated drawbar (standard on Feedex 390, Feedex 440 and Feedex 422) provides a generous pick-up ground clearance of up to 60cm to Two discharge rollers unload the crop to an even mat.

Controlled unloading

Two massive discharge rollers are standard on the Feedex 422 for unloading the material and spreading it in a highly uniform and flat mat. The driveline comprises a side-mounted shaft, a smooth-operation gearbox and heavy-duty chains that provide positive drive to the wear-free rotors for enhanced material distribution and tight pack, leading to higher-quality silage as well as to time and cost savings.

Extra benefit comes from the optional left/right cross conveyor, which is easy to install with the help of connectors and couplers for daily feeds to include fresh-cut forage. When harvesting silage on the other hand, the operator will remove the unit within a few minutes to ensure the machine is used to its full 12-tonne capacity.

Advantages

- Strong all-steel sides, U-channel steel frame and stanchions
- Sides with smooth interior surfaces for smooth crop advance and swift unloading
- The Feedex 422 model features a standard access door
- Hydraulic articulated drawbar provides generous ground clearance on all models
- Strong and sturdy chassis and wide tires. Single axle or spring-loaded tandem axle depending on model
- All forage wagons are available as maximum speed options
- The cross conveyor belt is a retrofittable option on all Feedex 422 models



Two discharge rollers unload the crop to an even mat.



The bi-directional cross conveyor allows for right and left hand discharge, saving time and money when daily rations include fresh-cut forage.



Small and mid-sized sideline farmers – in particular hill farmers – will welcome the low-build Alpex 220 and Alpex 280 models.

High capacity for small farms: Alpex 220 • 280



The tailboard features standard hydraulic operation.



Hydraulic extension control is an option.



The efficient arm-controlled feeder unit with forged double-finger tines.



All lubrication points are grouped on a bank.



PilotBox-T provides electrohydraulic operation.

Stability on the slope

The low profile and low centre of gravity guarantee absolutely stable and safe operation on slopes, under trees and in low buildings. Road transport is not an issue either for these compact yet high-capacity machines, which are rated to maximum speeds of 40 km/h.

Clean pick-up

The arm-controlled feeder unit with forged double tines manages enormous masses of material and the standard lift-out limit switch is gentle both on man and machine during headland turns.

The standard 4-knife cutting system cuts the crop to suitable lengths that are easy to digest. Applications that require shorter cuts are catered for by the optional 16-knife system giving gentle yet precise silage cuts.

Hydraulic tailboard

The hydraulic tailgate offers swift emptying and convenient operation from the tractor. Once the material is unloaded, gate closing is sensor controlled.

Optimum loading and unloading

As the material enters the machine, it is transferred fast and effectively to the rear by the hydraulic chain-and-slat conveyor for full utilisation of its capacity. The slat-and-chain conveyor may also be operated from a control at the rear of the machine in addition to the cab based control. Besides, there is variable control of loading/unloading speeds.



Smooth sides, powerful chain-and-slat conveyor – the smaller Vicon models are true load masters, too.



The standard baffle plate ensures a uniform crop flow into the machine.

Advantages

- Low build for hilly terrain
- 28.0 m³ maximum capacity (at average density)
- Maximum 2.70 m overall height; 2.00m with extensions folded
- Standard hydraulic brake system; optional air brake
- Large 15/55-17 tyres
- Easy control from PilotBox-T, which allows operating Apex 220 and Apex 280 from tractors with only minimum hydraulic specification
- Optional arable tyres



Extensions feature mechanical and stepped folding.

Clean forage: Feedex 300 • 360 S • 360 T





Superior road performance

The 40 km/h version features a stronger drawbar, stronger axles, a brake system and heavy-duty tyres for swift road speeds. 19" and 500" tyres are available as optional extras.

When it gets tight for space

The hay extensions fold down and into the steel body to pass through low gates, reducing the total height of the single-axle Feedex 300 und Feedex 360 models to 2.0m. A hydraulic fold system is available as an option.

The comfort tailboard

Two sensor controlled hydraulic rams open and close the tailboard automatically. The standard filling level indicator ensures the machine is filled to full capacity.

Easy control from PilotBox-T

All hydraulic functions – body, tailboard, chain-and-slat conveyor, pick-up and cutting system – can be preselected on the PilotBox-T control unit and operated via the tractor spool – a simple and cost-effective solution that eliminates the need for a separate hydraulic system on the forage wagon.

The hydraulic chain-and-slat conveyor is controlled infinitely variably from the PilotBox-T unit as well as from an external control at the rear of the wagon.

Advantages

- Capacities of 30-36m³
- Quiet-running and spring-loaded tandem axle on Feedex 360 T
- Low 2.32 m build thanks to foldable hay extensions
- Extensions feature mechanical and stepped folding
- Hydraulic extension folding is an option
- Standard roller crop guard
- Optional air brake



PilotBox-T – convenient operation also from older tractors.



Smooth interior walls and foldable hay extensions.



The stable and spring-loaded tandem axle provides high driver comfort (Feedex 360 T).



Vicon forage wagons stand out for quiet-running and an extraordinary appetite.

Efficient and high-capacity: Feedex 390 • 440 • 500 • 422



Tandem axles with standard spring suspension and wide tyres.

The all-round machine

Feedex 390 is the multi-purpose machine in the range and its full-steel body and hay extensions cater for demanding applications. The sensor controlled and hydraulic tailboard opens and shuts tight enough for the finest chopped material. The standard filling level indicator ensures the wagon is conveniently filled to capacity.

Built-in protection

Each knife in the cutter system is individually protected from impact with foreign objects and stones. The heavy spring-loaded knife breaks back from impact and returns to its cutting position without suffering any damage at all.

Capacity for professional harvesting

RotoControl – five feeder arms (option on Feedex 390) for maximum throughput. Vicon combines proven forage wagon technology with an arm-controlled feeder unit to create a high-performance machine that meets the highest demands. Double-finger tines guarantee high throughputs and longevity of the entire system.

PilotBox-C – comfort control system

Pilot-Box-C is standard specification on Feedex 440 and Feedex 422. The control box offers convenient operation of pick-up, feed and cutting system, tailboard and chain-and-slat conveyor.

Sensors and warning lights guarantee trouble free operation. The electrohydraulic system requires merely one double-acting spool or alternatively one single-acting spool valve with a return line.



Advantages

- 39-50m³ capacities
- Quiet-running and spring-loaded tandem axle with optional flotation tires
- Low 3.70m build
- Standard roller crop guard
- Air brake is an option on Feedex 390, Feedex 440 and Feedex 422
- Hydraulic articulated drawbar is standard on Feedex 390, Feedex 440 and Feedex 422
- Feedex 500 as special dry-fodder loader wagon with six feeder combs for hay and straw



Easy control – PilotBox-T (Feedex 390, Feedex 500).



Convenient control – PilotBox-C (Feedex 440, Feedex 422).

Options



Hydraulic artic drawbar is available for all Alpex 220-Feedex 360 models. High ground clearance of up to 600mm provides for stability on ramps and clamps.



Hydraulic hay extensions for all Alpex 220-Feedex 360T models. Convenient adaptation of load height from tractor cab.



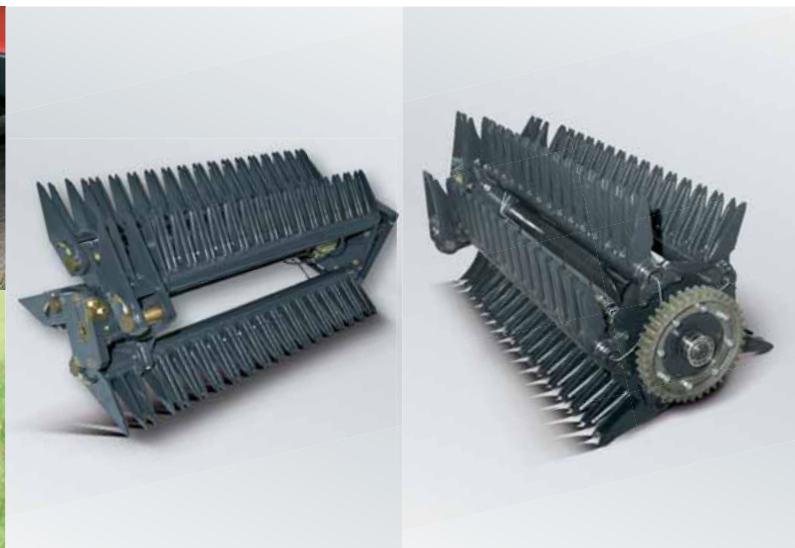
1.85m wide pick-up unit for clean gathering from wide swaths. Standard roller crop guard (option on Alpex 220, Alpex 280).



Cutting system - 16-knife and 17-knife silage system.



Choice of tyres (15/55-17, 380/55-17, 19/45-17, 500/50-17 arable tyres).



Arm-controlled RotoControl loading unit with 3,4 or 5 feeder arms.

Technical Specifications

Models	Alpex				Feedex				
	220	280	300	360 S/T	390	440	422	500	
Dimensions and weights									
GVWR	kg	4,500	6,000	6,000	S 6,000/ T 8,000	8,000	12,000	12,000	8,000
GVWR	kg	800	800	900	1,000	1,000	1,500	1,500	1,000
Overall length	m	6.95	7.95	7.40	8.47	8.50	9.00	9.00	9.50
Overall width	m	2.30	2.30	2.34	2.34	2.34	2.54	2.54	2.54
Overall height									
Extensions down	m	1.99	1.99	2.26	2.26/2.32	3.20	-	-	3.35
Extensions up	m	2.70	2.70	3.25	3.25/3.33	3.55	-	-	3.70
Rigid extensions	m			-	-	-	3.65	3.65	-
Platform height	m	0.73	0.74	1.04	1.04/1.12	1.17	1.29	1.29	1.17
Capacity at average density	cbm	22	28	30	36	39	42	44	50
Capacities to DIN 11741	cbm	14	17.5	19.0	23.0	25.4	27.8	29.0	32
Dead weight depending on spec.	kg	2,200	2,500	2,730	3,100/3,700	4,100	5,000	5,000	5,000
RotoControl double-finger feeder									
Pick-up work widths (option), hydr. lift-out baffle plate, 5 rows of tines, pneum. gauge wheels (m)		1.65	1.65	1.65	1.65 (1.85)	1.65 (1.85)	1.85	1.85	1.85
Roller crop guard		○	○	●	●	●	●	●	●
No. of grease points on lubrication bank		10 (13)	10 (13)	13	13/13 (16)	13 (16)	16	16	13 (19)
No. of feeder arms		3 (4)	3 (4)	4	4/4 (5)	4 (5)	5	5	4 (6)
No. of knives (option)		4 (16)	4 (16)	(16/17/33)	(16/17/33)	(16/17/33)	(16/17/33)	(16/17/33)	8
Drives/body/axles									
PilotBox model		T	T	T	T	T	C	C	T
Hay extensions									
Mechanical folding		stepped ●	stepped ●	stepped ●	stepped ●	stepped ●	-	-	stepped ●
Hydraulic folding		○	○	○	○	-	-	-	-
Hydraulic couplers		1 da + 1 sa	1 da + 1 sa	1 da + 1 sa	1 da + 1 sa	1 da + 1 sa	1 da	1 da	1 da + 1 sa
Alternatives		2 da+Return	2 da+Return	2 da+Return	2 da+Return	2 da+Return	1 sa+Return	1 sa+Return	2 da+Return
Attachment/driveshaft									
Universal drawbar		●	●	●	●	●	-	-	●
Articulated drawbar, hydr. stop		○	○	○	○	○	●	●	○
Wide-angle driveshaft, to one side (slip clutch)		●	●	●	-	-	-	-	-
Wide-angle driveshaft, to either side (cam clutch)		○	○	○	●	●	●	●	●
Axles									
Single axle/track width	m	●/1.90	●/1.90	●/1.65	●/1.65	-	-	-	-
Suspended tandem axle / track width	m	-	-	-	○/1.70	●/1.70	●/1.80	●/1.80	●/1.70
Brakes									
Hydraulic brake	25/40 km/h	●/○	●/○	●/-	●/-	●/-	●/○	●/○	●/○
Ruckmatic overrun brake	25/40 km/h	-/-	○/-	○/-	○/-	○/-	-/-	-/-	-/-
Air brake	25/40 km/h	○/○	○/○	○/○	○/○	ALB ○/○	ALB ●/○	ALB ●/○	-/-
Tyres									
15/55 · 17 Impl. 10 PR		●	-	●	●	-	-	-	-
15/55 · 17 Impl. AS tread		○	○	-	-	-	-	-	-
380/55 · 17 Flotation +		○	●	○	○	-	-	-	-
19/45 · 17 Impl. 10 PR		-	○	○	○	●	-	-	●
500/50 · 17 Impl. 14 PR		-	-	○	○/○	○	●	●	○

S=Single axle T=Tandem axle ●= standard ○= option - = not available



Kverneland Group

Kverneland Group is a leading international company developing, producing and distributing agricultural machinery and services.

Strong focus on innovation allows us to provide a unique and broad product range with high quality. Kverneland Group offers an extensive package of systems and solutions to the professional farming community. The offering covers soil preparation, seeding, forage- and bale equipment, spreading and spraying.



Original Spare Parts

Kverneland Group spare parts are designed to give reliable, safe and optimal machinery performance - whilst ensuring a low cost life-cycle. High quality standards are achieved by using innovative production methods and patented processes in all our production sites.

Kverneland Group has a very professional network of partners to support you with service, technical knowledge and genuine parts. To assist our partners, we provide high quality spare parts and an efficient spare parts distribution worldwide.



Kverneland Group UK Ltd.
Walkers Lane, Lea Green, St. Helens
Merseyside, WA9 4AF
Phone + 44 1744 8532 00

Kverneland Group Ireland Ltd.
Hebron Industrial Estate
Kilkenny, Ireland
Phone + 353 56 51597

www.vicon.eu

