

VERACITOR VX SERIES 1,600kg – 3,500kg

The whole truth





VERACITOR VX SERIES

Contents

The True Solution	5	True Value	12
		▪ Low Cost of Ownership	
True Dependability	6	True Serviceability	14
▪ Reliability		▪ Maximum Access	
▪ Powertrain		Choices and Versatility	16
▪ Reducing Wear and Tear		▪ Technical Capabilities	
▪ Innovative Cooling System		▪ Engine Specifications	
▪ Intellix Vehicle System Manager		Highlights and Options	18
True Productivity	8	▪ Dependability	
▪ Performance		▪ Productivity	
▪ Five Engine Options		▪ Ergonomics	
▪ Four Transmission Options		▪ Cost of Ownership	
True Comfort	10	▪ Service	
▪ Intelligent Ergonomics			
▪ Hydraulic Control Lever Options			
▪ Auto Deceleration and Dynamic Auto Deceleration System			
▪ EZ-LP Gas Tank Bracket			





Yale

16VX

Yale

Yale
MATERIALS HANDLING UK

AD 31 R1 L5

AD 31 R1 R2

AD 31 R2

AD 33 R1

AD 33 R2 77

5 R1 76

3x5 L

Yale

THE TRUE SOLUTION

The Yale Veracitor VX Series

Yale has invested heavily in people, processes and capital equipment to deliver this innovative series of internal combustion engine lift trucks. Each lift truck in the Veracitor VX range has been designed with component commonality, for simplified operational maintenance and bespoke productivity packages, to meet specific customer needs. Each lift truck demonstrates Yale's total commitment to innovative design, comprehensive testing, high quality, advanced components and superior manufacturing. The company's leadership in the materials handling sector has been achieved through extensive research among existing and prospective customers, lift truck operators and experts in ergonomics and biometrics. The Yale Veracitor VX Series offers dependability, productivity, comfort for operators and real value for customers through an impressively low cost of ownership. That's why each Yale Veracitor VX lift truck represents a true solution to today's materials handling needs.



TRUE DEPENDABILITY

Reliability

TRUTH N° 1

Our innovative cooling system enables dramatically lower operating temperatures and much longer running times.

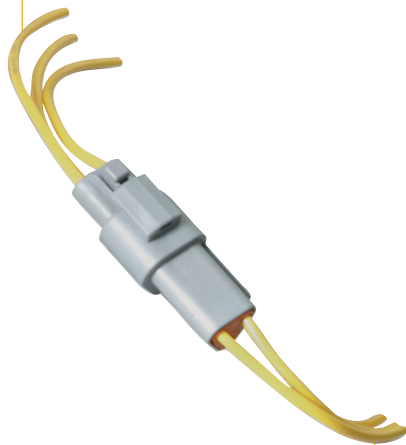
Yale Veracitor VX lift trucks are designed and manufactured to be the most dependable in today's market. That dependability is not only in evidence throughout the Veracitor VX Series, but also in Yale's expert advice, 24 hours parts availability and the most comprehensive warranty coverage in the industry. The Veracitor VX Series can reduce downtime by up to 30% and world-class reliability is achieved in four key areas.

Powertrain

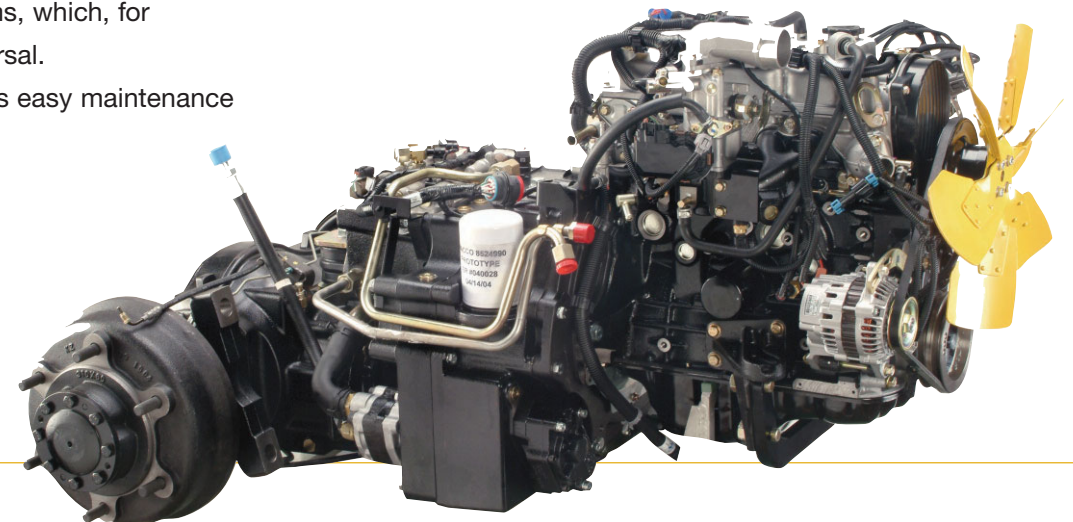
The reliable, rugged powertrain delivers exceptional durability through its computer-controlled engine and transmission, its tough clutch packs and remarkably robust gears and shafts. Long term durability is achieved by enhanced monitoring and the optional Powertrain Protection Systems, which, for example eliminate high speed power reversal. The engines offer low emissions as well as easy maintenance access.

Reducing Wear and Tear

Yale has raised the standards in lift truck serviceability and the Veracitor VX has the highest serviceability ratings in the industry. The Veracitor VX offers reliable electronics and sealed connectors, allowing the entire truck to be pressure washed. Hall effect sensors have solid-state components that are magnetically operated and are 100% sealed from the environment.



Sealed Electrical Connectors





Innovative Cooling System

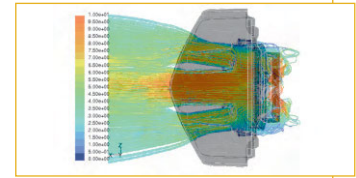
The cooling system operates at lower temperatures. This offers significant improvement when it comes to cooling air flow, increasing component life and minimising the risk of overheating in heavy-duty applications. Optimised ducting and high volume tunnels allow Veracitor VX lift trucks to run longer in a cooler state. Radiators are 100% shock-mounted for long life.

O-ring face seals on all high pressure hydraulic connections eliminate the need for thread sealants creating leak-free joints. A superior filtration system increases the life span of all hydraulic components.

Intellix Vehicle System Manager (VSM)

This innovative, highly advanced on-board computer is, essentially, the sort of electronic management system that is extensively used in the automotive industry. It controls the engine and transmission by monitoring and protecting the lift truck.

A sensitive computer like this needs protection, so it is environmentally sealed to keep out water and debris. Furthermore, CANbus electronics reduce the complexity of the wiring, which have been routed well away from all heat sources.



Maximised air flow for enhanced cooling



Serpentines, Square Wave and Combi-Cooler Radiator 2000kg – 3500kg Model



Serpentines and Square Wave Radiator 1600kg – 2000kg Model



O-ring face seals on all high pressure, hydraulic connections



TRUE PRODUCTIVITY

Performance

Every single facet of each Veracitor VX lift truck has been designed to boost performance and to increase productivity. This is true of all Veracitor VX configurations. What's more, the Yale Veracitor VX models have been designed to meet, and exceed, your specific application requirements. The Yale Veracitor VX Series productivity cost savings are achieved through lower lift truck operating expenses, reduced labour costs, reduced operator overtime expense and additional savings from increased throughput.

TRUTH N^o 2

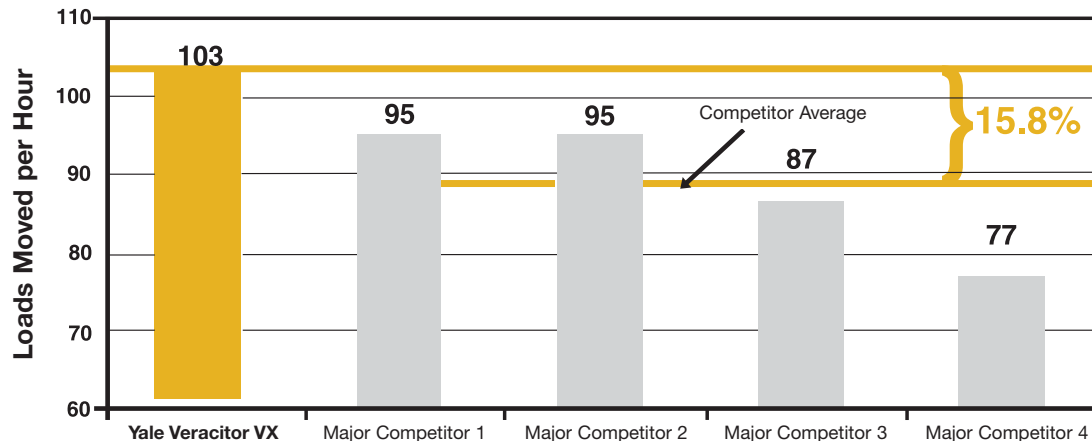
Continuous Stability Enhancement (CSE) improves lateral stability and boosts driver confidence.

Yale Veracitor VX lift trucks out performed the major competition on an identical test cycle. The combination of engine and transmission options allows our lift trucks to be tailored to your specific applications.

The Yale 2000kg – 3500kg Productivity lift truck delivers maximum performance in heavy-duty applications. The Yale Value lift truck provides excellent performance for medium-duty applications and is optimised for the lowest hourly cost of operation. The Yale Base lift truck offers first-rate performance for light to medium duty applications and is geared to minimise your cost of acquisition, without compromising performance.

Five Engine Options

The Yale Veracitor VX Series offers a variety of productivity options. Five engine selections are available, offering multiple performance levels with outstanding operating costs.



	1600kg – 2000kg	2000kg – 3500kg
LP Gas Engines	2.0L Mazda	2.0L Mazda 2.2L Mazda 2.4L GM
Diesel Engines	2.6L Yanmar	2.6L Yanmar 3.3L Yanmar

Four Transmission Options

Four Yale transmissions are available:

- | | |
|------------------|--|
| 1600kg – 2000kg: | Standard Electronic
Techtronix 100 |
| 2000kg – 3500kg: | Standard Electronic
Techtronix 100
Techtronix 200
Techtronix 200X |

All of these transmissions feature smooth electronic inching, electronic shift and neutral start/brake interlock. The Techtronix transmission also maximises controlled ramp descent, limiting roll to 75mm per second. Auto speed hydraulics with automatic inching control (on Techtronix 200 and 200X transmission), automatically increases engine speed when hydraulics are actuated, while maintaining control over vehicle speed. Throttle response management increases operator efficiency.

The Continuous Stability Enhancement system (CSE), enhances each lift truck's lateral stability with a simple, maintenance-free design that does not compromise uneven surface travel.

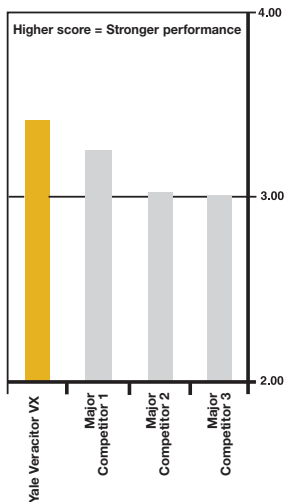
TRUTH N°3

Intellix VSM (Vehicle System Manager) maximises driver efficiency and reduces downtime.



TRUE COMFORT

Intelligent Ergonomics



The truth of the matter is that operators prefer Veracitor VX lift trucks. Results from an independent survey of a representative sample of lift truck operators confirm this: Comfort is enhanced due to the innovative design of the operator's compartment.

The isolated powertrain and new FLM80 Full Suspension Seat provide best in class Whole-Body Vibration levels of 0.6m/s^2 , helping to reduce fatigue, aches and pains and ensuring that the operator remains comfortable and productive throughout the shift.

Excellent operator visibility is afforded through the Yale Hi-Vis™ mast and Command Driving Position. Other key features include: the optimised step height, increased shoulder clearance, easy right-sided access and ergonomically designed controls.

Rear driving comfort has been improved with a convenient, rear drive handle complete with horn button, optimally placed on the rear overhead guard leg. The rear drive handle, in conjunction with an optional swivel seat, creates a comfortable and secure working environment. A smaller steering wheel and the infinitely adjustable steer column accommodate operators of all sizes.

*Source: Ergonomic Centre of North Carolina, USA.



Low step height provides easy entry and exit. The standard cowl-mounted, manual hydraulic levers also allow easy access for right-side entry/exit. Yale's rounded overhead guard design provides extra shoulder entry and headroom.

Hydraulic Control Lever Options

The optional Yale Accutouch, electro-hydraulic control option offers excellent ergonomic design with shorter reach and throw levers. This means that considerably less effort is required for operation, compared to manual hydraulic levers. The fully adjustable armrest is contoured for maximum comfort and flexibility and minimum muscle and joint strain and - in addition to the hydraulic functions - features a horn and direction switch, ensuring that all key truck functions are within constant, easy reach.

Auto Deceleration System and Dynamic Auto Deceleration System

The Auto Deceleration System (ADS), which is standard on the Yale Techtronix 100 and 100X transmissions, reduces brake pedal usage and subsequently operator leg fatigue.

It is programmable via the operators dash display.

The Dynamic Auto Deceleration System (DADS) performs in the same way but is not programmable through the dash display. It is controlled by the operator and activated by the release of the accelerator pedal, the braking affect being directly proportional to the accelerator pedal position.

EZ - LP Gas Tank Bracket

The optional EZ-Tank Bracket is an added feature on the standard swing-out bracket. The LP tank swings out and drops down approximately 60 degrees for effortless removal and installation.

TRUTH N° 4

The Auto Deceleration System (ADS) and the Dynamic Auto Deceleration System (DADS) reduces brake usage, leading to fewer brake shoe replacements and lower service costs.



TRUE VALUE

Low Cost of Ownership

TRUTH N°5

Intellix VSM (Vehicle System Manager) is a diagnostic computer that maximises uptime by monitoring and protecting all key functions.

The purchase price of a lift truck is only a small part of the overall cost. Cost of ownership accounts for the largest portion of expenditure and this includes such elements as periodic maintenance, unscheduled repairs, tyres, brakes and fuel costs.

Yale engineers focused on delivering customer cost savings with additional engine and transmission options, increased hydraulic efficiency and world-class serviceability.

The Veracitor VX Value truck offers substantial operating cost savings over the competition.

The world-class dependability of the Veracitor VX Series has reduced the cost to operate these lift trucks through a selection of rugged powertrain configurations, radiator design upgrades, reliable electronics and truly exceptional hydraulics.

The Techtronix transmissions offer improved tyre and fuel costs through controlled direction changes. Yale's various engine options contribute to reduced operating costs.

The Mazda 2.0L, 2.2L and GM 2.4L LP Gas engines, in conjunction with the Yanmar 2.6L and 3.3L Diesel engines, deliver outstanding fuel economy, with competitive performance.

The available Load Sensing Hydraulics system delivers increased operational efficiency, as the engine only supplies power to the hydraulic pumps when required. This delivers increased responsiveness and acceleration, which helps to maximise productivity and lower fuel consumption, reducing overall operating costs.

Intellix VSM, the smart Vehicle System Manager, maximises driver efficiency by managing fast direction changes that reduce tyre spin and wear. Intellix VSM maximises uptime by monitoring and protecting key lift truck functions.



TRUTH N°6

Our Robust Clutch Packs last three times longer than normal clutch systems – saving you time and money.

Brake life is significantly improved with the optional Auto Deceleration System (ADS) and the Dynamic Auto Deceleration System (DADS) which automatically slows the lift truck when the throttle pedal is released. This action minimises brake usage requirement, operator fatigue and reduces associated brake costs.

The Yale Productivity Truck has oil immersed brakes and has a distinct advantage operating in harsh and heavy duty cycle environments.

Yale has improved the serviceability of the Veracitor VX Series – reducing the labour costs associated with periodic maintenance and unscheduled repairs. Veracitor VX lift trucks offer best in class service access with a one-piece, rear-opening hood providing cowl-to-counterweight access. An easy to remove floor plate requires no tools and offers complete access to the powertrain. Simplified daily checks and reduced service requirements result in lower maintenance costs.

TRUTH N°7

Our unique Techtronix Transmission provides controlled power reversal, virtually eliminating tyre spin and prolonging tyre life.



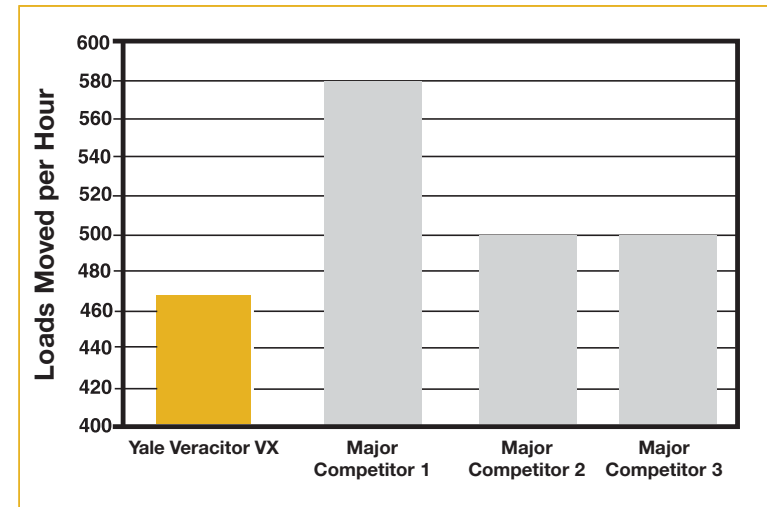
TRUE SERVICEABILITY

The Veracitor VX Series has been designed to be extremely easy to service as well as requiring less maintenance. From the rear-opening, one-piece hood and on-board diagnostics, to the most comprehensive parts availability in the industry, the Veracitor VX sets new standards in lift truck serviceability.



TRUTH N°8

We offer the most reliable and comprehensive parts program available in the industry, maximising your productivity.



By utilising cutting edge technology and superior manufacturing facilities, Yale engineers have delivered the highest serviceability ratings in the industry. This chart represents the Society of Automotive Engineers (SAE) based rating, evaluating speed and difficulty of over 30 service routines. Lower score indicates easier serviceability.

Source: NMHG Counterbalanced Development Centre.

Maximum Access

The Veracitor VX has a rear-opening, one-piece hood that opens an impressive 75 degrees. Coupled with the one-piece floor plate, it provides excellent cowl-to-counterweight access. All engine compartment daily checks are located on the same side of the lift truck for quick identification and access.

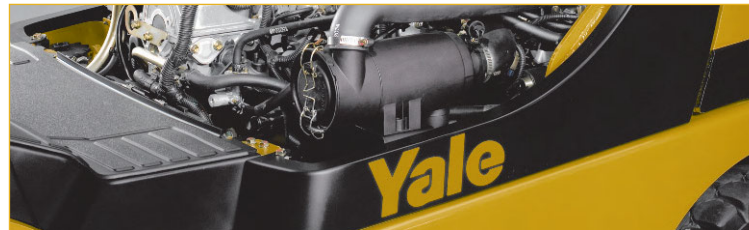
The uncluttered layout under the hood offers clean hydraulic and electrical routings.

The radiator is easy to access and the filler cap and optional radiator lint screen can be removed without the use of tools. The coolant recovery bottle is easily visible to check levels.

A coolant fill neck is located so that it's easy to reach.

The Intellix VSM, Vehicle System Manager continuously monitors lift truck functions and immediately alerts the operator to any service needs. Extensive on-board diagnostics on the advanced dash display communicates service codes, enabling quick and accurate repairs. PC-based diagnostics also enable fast and precise troubleshooting facilitating first-time fixes.

Yale has reduced regular service requirements on the Veracitor VX and automatic electronic inching eliminates the



need for periodic adjustment. The Auto Deceleration System (ADS) and the Dynamic Auto Deceleration System (DADS) feature reduces brake usage, leading to decreased brake maintenance and pad replacement. Also oil immersed brakes are standard on the Yale Productivity Truck. All these reductions in lift truck service, reduce cost and improve profitability.

The Yale difference can be summed up in one, highly successful formula, which clearly illustrates why every Veracitor VX in the range is a truly remarkable lift truck.

World Class Dependability + Superior Serviceability

LOW COST OF OWNERSHIP



VERACITOR VX SERIES

Choices and Versatility

The Veracitor VX Series is available in three configurations to meet and exceed your material handling application requirements.



The Veracitor VX Series offers lift truck configurations and options to meet all application requirements.

LP Gas Engines	Transmissions	Hydraulics
2.0L Mazda FE** Power = 29.8 kW Torque = 106 Nm @ 2,400 RPM 2.0L Mazda FE* Power = 32 kW Torque = 111 Nm @ 2,700 RPM 2.2L Mazda F2* Power = 37 kW Torque = 127 Nm @ 2,700 RPM 2.4L General* Motors Power = 45 kW Torque = 167 Nm @ 2,700 RPM	Standard Electric Base Model One-Speed Transmission Electronic Inching Heavy-Duty Clutch Packs Techtronix 100 Value Model All Features of Standard Single-Speed Auto-Deceleration Controlled Rollback Techtronix 200* Productivity Model All Features of Techtronix 100 Auto-Speed Hydraulics with Automatic Inching Control Throttle Response Management Techtronix 200X* Productivity Model All Features of Techtronix 200 Two-Speed Auto Shift (2x forward, 1x reverse) Extended drawbar pull capability. (DADS) - Dynamic Auto Deceleration System	Manual Cowl Base Model Easy Reach Ergonomic Design Excellent Right-Side Access Accutouch Electro-Hydraulics All Models Fingertip Activation Best-In-Class Comfort Excellent Right-Side Access
Diesel Engines		
2.6L Yanmar** Power = 29.1 kW Torque = 104 Nm @ 2,400 RPM 2.6L Yanmar* Power = 36 kW Torque = 146 Nm @ 2,700 RPM 3.3L Yanmar* Power = 48 kW Torque = 210 Nm @ 2,600 RPM		

* 2000kg – 3500kg Model only

** 1600kg – 2000kg Model only

Lift Truck Type	Capacity	Base	Value	Productivity
Design Objective	1600kg – 2000kg	lowest acquisition cost	minium cost per hour	–
	2000kg – 3500kg	lowest acquisition cost	minium cost per hour	maximum loads moved per hour
Lift Truck Usage	1600kg – 2000kg	8 – 15 hours per day	16 – 24 hours per day	–
	2000kg – 3500kg	less than 8 hours per day	up to 16 hours per day	12 – 24 hours per day
Ramp Usage	1600kg – 2000kg	infrequent	frequent	–
	2000kg – 3500kg	infrequent	frequent	intensive
Extended Drawbar Pull*	1600kg – 2000kg	none	minimum	–
	2000kg – 3500kg	none	minimum	maximum
Hydraulic Attachments	1600kg – 2000kg	sideshift/fork positioner	attachment usage	–
	2000kg – 3500kg	sideshift/fork positioner	moderate	high attachment usage
Lift Height	1600kg – 2000kg	less than 3500mm	3500mm – 4500mm	–
	2000kg – 3500kg	less than 3048mm	3048mm – 4572mm	more than 4572mm
Grade Capability	1600kg – 2000kg	less than 5%	5% – 10%	–
	2000kg – 3500kg	less than 5%	5% – 10%	more than 10%

*Techtronix 200X transmission

VERACITOR VX SERIES

Highlights and Options

Engine option overview										
Model	Capacity	Base			Value			Productivity		
		Diesel	LPG		Diesel	LPG		Diesel	LPG	
		Yanmar	Mazda	GM	Yanmar	Mazda	GM	Yanmar	Mazda	GM
16 VX	1600kg	2.6L	2.0L	-	2.6L	2.0L	-	-	-	-
18 VX	1800kg	2.6L	2.0L	-	2.6L	2.0L	-	-	-	-
20 SVX	2000kg	2.6L	2.0L	-	2.6L	2.0L	-	-	-	-
20 VX	2000kg	2.6L	2.0L	-	2.6L	2.2L	-	3.3L	-	2.4L
20 VX	2000kg	-	2.2L	-	2.6L	-	-	-	-	-
25 VX	2500kg	2.6L	2.0L	-	2.6L	2.2L	-	3.3L	-	2.4L
25 VX	2500kg	3.3L	2.2L	-	-	-	-	-	-	-
30 VX	3000kg	2.6L	2.0L	-	2.6L	-	-	-	-	-
30 VX	3000kg	3.3L	2.2L	-	-	2.2L	-	3.3L	-	2.4L
35 VX	3500kg	3.3L	2.2L	-	3.3L	2.2L	2.4L	3.3L	-	2.4L

Productivity highlights and options	Base 16VX – 35VX	Value 16VX – 35VX	Productivity 20VX – 35VX
All LP Gas and Diesel Applications			
Standard electronic transmission with electronic inching	Std	-	-
CSE (Continuous Stability Enhancement)	Std	Std	Std
Yale Global Hi-Vis™ mast	Std	Std	Std
Hall effect sensors and switches feature solid-state components - No adjustments	Std	Std	Std
Sealed electrical connectors keep out water and debris	Std	Std	Std
Directional change lever	Std	Std	Std
Oil immersed brakes (20VX - 35VX)	-	Opt	Std
Techtronix 100 transmission (16VX – 35VX)	-	Std	Opt
- All the features of the standard electronic transmission	-	✓	✓
- Auto Deceleration System – smooth auto braking	-	✓	✓
- Controlled power reversal feature – reduces tyre wear up to 50%	-	✓	✓
- Controlled roll back on ramps – enhances driver control	-	✓	✓
Techtronix 200 transmission (20VX – 35VX)	-	Opt	Std
- All the features of the Techtronix 100	-	-	✓
- Auto-speed Hydraulics – superior hydraulic control	-	-	✓
- Throttle Response Management – superior traction control	-	-	✓
Techtronix 200X transmission (20VX – 35VX)	-	-	Std
- All the features of the Techtronix 200	-	-	✓
- Two-speed auto shift (2x forward, 1x reverse)	-	-	✓
- Extended Draw Bar Pull (EDBP)	-	-	✓
- Dynamic Auto Deceleration System (DADS)	-	-	✓
Accutouch electro-hydraulic controls	Opt	Opt	Opt
Return-to-set tilt	-	Opt	Opt
Rear drive handle with horn button	Std	Std	Std
Full suspension seat	Std	Std	Std
Full suspension swivel seat	Opt	Opt	Opt
Swing-out, drop-down EZ-Tank Bracket	Opt	Opt	Opt
Single inch/brake pedal	Std	Std	Std
Foot directional control	Opt	Opt	Opt
Front and rear work lights	Std	Std	Std
Mirrors – rear/side view	Opt	Opt	Opt
Quick disconnect with extension tubes	Opt	Opt	Opt
Productivity Package	-	Opt	Opt

VERACITOR VX SERIES

Highlights and Options

Dependability highlights and options	Base 16VX – 35VX	Value 16VX – 35VX	Productivity 20VX – 35VX
All LP Gas and Diesel Applications			
Rugged Powertrain	Std	Std	Std
Powertrain protection system	Opt	Opt	Opt
Intellix VSM (Vehicle System Manager)	Std	Std	Std
Premium electronic monitoring	Opt	Opt	Opt
100% shock-mounted radiator	Std	Std	Std
Standard serpentine core radiator	Std	–	–
Anti-clog, square wave radiator	–	Std	Std
Heavy-duty anti-clog square wave radiator	–	Std	–
Heavy-duty 'Combi Cooler' radiator (20VX – 35VX)	–	Std	Std
CANbus electrical system	Std	Std	Std
Solid-state Hall Effect sensors – no adjustments required	Std	Std	Std
Sealed electrical connections	Std	Std	Std
Keyless start (with auxiliary key switch)	Opt	Opt	Opt
LED Brake and Backup Lights	Std	Std	Std
Precise wire harness routings	Std	Std	Std
Sealed dash display	Std	Std	Std
Drive lights and rear works lights with halogen bulbs	Std	Std	Std
Electronic horn	Std	Std	Std
O-ring face seal hydraulic fittings	Std	Std	Std
10-micron high performance in-tank hydraulic oil filter	Std	Std	Std
Electronically controlled transmissions	Std	Std	Std
Counterweight designed to maximise air flow – enhanced cooling	Std	Std	Std
High air intake with pre-cleaner	Opt	Opt	Opt
Accumulator	Opt	Opt	Opt
Traction Speed Limiter	–	Opt	Opt
FleetCare Package	–	Opt	Opt

Ergonomic highlights and options	Base 16VX – 35VX	Value 16VX – 35VX	Productivity 20VX – 35VX
All LP Gas and Diesel Applications			
Infinite adjustment steer column	Std	Std	Std
Optimised step height 350mm (13.8 inches)	Std	Std	Std
Excellent mast visibility	Std	Std	Std
Excellent rearward visibility	Std	Std	Std
Dash display positioned for optimum visibility	Std	Std	Std
Low brake pedal effort	Std	Std	Std
Small 30cm steering wheel with spinner knob	Std	Std	Std
Single inching/brake pedal with excellent ergonomic positioning	Std	Std	Std
Conveniently located storage compartment	Std	Std	Std
Isolated powertrain	Std	Std	Std
Enhanced insulated non-metallic hood	Std	Std	Std
Auto Deceleration System	–	Std	Std
Conveniently located cowl-mounted hydraulics	Std	–	–
Low noise hydraulic pump	Std	Std	Std
Floormat	Std	Std	Std
Swing out LP tank bracket	Std	Std	Std
Swing-out, drop-down EZ-Tank Bracket	Opt	Opt	Opt
Accutouch electro-hydraulic controls with fully adjustable armrest	–	Opt	Opt
Return-to-set tilt	Opt	Opt	Opt
Rear drive handle with horn button	Std	Std	Std
Full suspension seat	Std	Std	Std
Full suspension swivel seat	Opt	Opt	Opt
Single inch/brake pedal	Std	Std	Std
Foot directional control	Opt	Opt	Opt
Load Weight Indicator	Opt	Opt	Opt

Note: Std = Standard, Opt = Optional, – = Not Available

Lift Truck performance may be affected by the condition of the vehicle, how it is equipped and the application. Consult your Yale Industrial Truck Dealer for further information. Specifications are subject to change without notice.

VERACITOR VX SERIES

Highlights and Options

Cost of Ownership highlights and options	Base 16VX – 35VX	Value 16VX – 35VX	Productivity 20VX – 35VX
All LP Gas and Diesel Applications			
Standard serpentine core radiator	Std	–	–
Anti-clog, square wave radiator	–	–	Std
Heavy-duty, anti-clog square wave radiator	–	Std	–
Heavy-duty “Combi-Cooler” radiator (20VX – 35VX)	–	Opt	Std
Electronically controlled transmissions	Std	Std	Std
Counterweight designed to maximise air flow	Std	Std	Std
Electronic systems monitoring	Std	Std	Std
Auto Deceleration System	–	Std	Std
Controlled power reversal	–	Std	Std
Throttle response management (20VX – 35VX)	–	–	Std
Oil immersed brakes (20VX – 35VX)	–	–	Std
Powertrain protection system	Opt	Opt	Opt
Premium monitoring package	Opt	Opt	Opt
Impact monitor	Opt	Opt	Opt
High intake with pre-cleaner	Opt	Opt	Opt
Paper applications kit (20VX – 35VX)	Opt	Opt	Opt
Accumulator	Opt	Opt	Opt
Vented hood (20VX – 35VX)	Opt	Opt	Opt
Radiator lint screen (20VX – 35VX)	Opt	Opt	Opt
Traction speed limiter	–	Opt	Opt
Operator password	Opt	Opt	Opt
FleetCare package	–	Opt	Opt
Rental package	–	Opt	Opt
Attachment carriage	Std	Std	Std
Integral side shift carriage	Opt	Opt	Opt

Service highlights and options	Base 16VX – 35VX	Value 16VX – 35VX	Productivity 20VX – 35VX
All LPG and Diesel Applications			
Cowl-to-counterweight access	Std	Std	Std
Easy floorplate removal – no tools required	Std	Std	Std
On-board diagnostics with advanced dash display	Std	Std	Std
PC-based diagnostics enabling fast and accurate troubleshooting	Std	Std	Std
Daily checks located on same side of truck and colour coded for quick identification	Std	Std	Std
Uncluttered layout with superb hydraulic and electrical routings	Std	Std	Std
Superior filtration system	Std	Std	Std
Intellix VSM (Vehicle System Manager)	Std	Std	Std
CANbus electrical system	Std	Std	Std
Robust transmission clutch packs	Std	Std	Std
Sealed electrical connectors	Std	Std	Std
O-ring face seal on all high pressure hydraulic connections	Std	Std	Std
Hall effect sensors and other solid state components require no adjustment	Std	Std	Std
Oil immersed brakes (20VX – 35VX)	–	–	Std
Operator password	Opt	Opt	Opt
Halogen bulbs utilised on drive and work lights	Std	Std	Std
Premium monitoring system	Opt	Opt	Opt
Paper applications kit (20VX – 35VX)	Opt	Opt	Opt
Powertrain protection system	–	Opt	Opt
LED brake and backup lights	Std	Std	Std
Vented hood (20VX – 35VX)	Opt	Opt	Opt
Swing-out, drop-down EZ-Tank Bracket	Opt	Opt	Opt

Yale, the Yale Logo, Veracitor VX and Yale Global Hi-Vis™ Mast are trademarks of Yale Material Handling Corporation in the United States and other countries.

The Yale products included in this document may be covered by U.S. Patent 6,684,148 and other patents pending.

