

Engine	Yuchai YC6J125Z-T20
Gross Power	92 kW (125 hp) @ 2,200 rpm
Net Power	84 kW (114 hp) @ 2,200 rpm
Operating Weight	10,100 kg
Standard Bucket Size	1.8 m ³
Standard Breakout Force	100 kN
Standard Dump Clearance	2,910 mm

833 WHEEL LOADER



TOUGH WORLD. TOUGH EQUIPMENT.

833 SPECIFICATIONS >>>

ENGINE

Emission Regulation	Tier 2 / Stage II
Make	Yuchai
Model	YC6J125Z-T20
Gross Power	92 kW (125 hp) @ 2,200 rpm
Net Power	84 kW (114 hp) @ 2,200 rpm
Peak Torque	500 N · m
Displacement	6.49 L
Number of Cylinders	6
Aspiration	Turbocharged

TRANSMISSION

Transmission Type	Countershaft, power shift
Torque Converter	Single stage, three elements
Maximum Travel Speed, fwd	41.4 km/h
Maximum Travel Speed, rev	30.7 km/h
Number of Speeds, fwd	4
Number of Speeds, rev	2

AXLES

Differential Front Type	Conventional
Differential Rear Type	Conventional
Axle Oscillation	±11°

STEERING

Steering Configuration	Articulated
Steering Relief Pressure	14.8 Mpa

BRAKES

Service Brake Type	Caliper disc brake
Service Brake Actuation	Air over Hydraulic
Parking Brake Type	Flexible shaft control
Parking Brake Actuation	Mechanical

HYDRAULIC SYSTEM

Main Pump Type	Gear
Main Relief Pressure	17 MPa
Raise time	5.7 s
Dump time	1.4 s
Float down time	2.8 s
Fastest Total Cycle Time	9.9 s

LOADER ARM PERFORMANCE

Tipping Load - Straight	7,143 kg
Tipping Load - Full Turn	6,122 kg
Bucket Breakout Force	100 kN
Maximum Dump Angle at Full Height	45°
Dump Clearance at Full Height Discharge	2,910 mm
Dump Reach at Full Height Discharge	1,072 mm
Maximum Hinge Pin Height	3,740 mm
Maximum Digging Depth, Bucket Level	42 mm
Bucket Rollback at Ground Level	43°
Bucket Rollback at Carry	50°
Bucket Rollback at Maximum Height	63.8°

BUCKET PERFORMANCE

Reference Bucket	1.8 m ³
------------------	--------------------

DIMENSIONS

Length with Bucket Down	6,943 mm
Width Over Tires	2,295 mm
Wheelbase	2,870 mm
Wheel Tread	1,850 mm
Ground Clearance	322 mm
Turn Angle, Either Side	38°
Rear Angle of Departure	33°
Turning Radius, Outside of Tire	5,393 mm
Turning Radius, Center of Tire	5,170 mm
Turning Radius, Bucket Carry	5,876 mm

TIRES

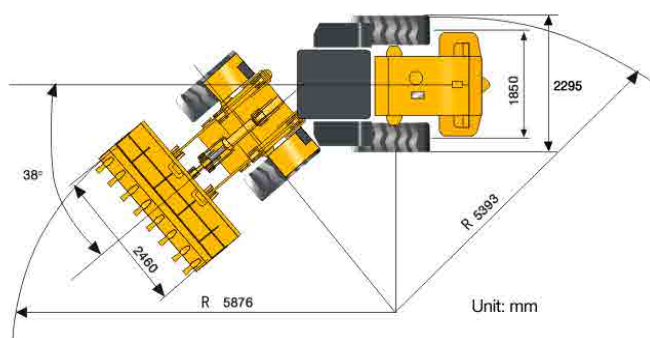
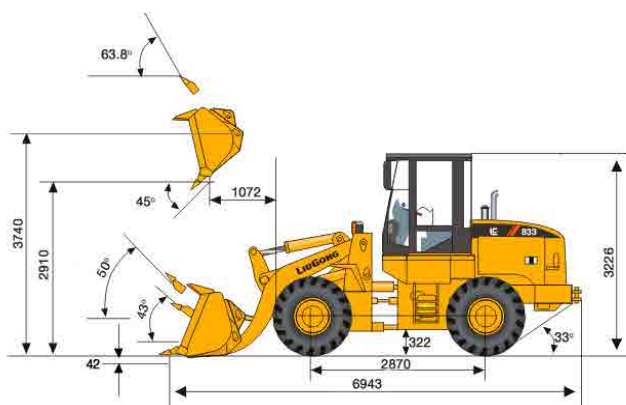
Tire Size	17.5 - 25
-----------	-----------

OPERATING WEIGHTS

Operating Weight	10,100 kg
------------------	-----------

SERVICE CAPACITY

Fuel Tank	145 L
Engine Oil	17.5 L
Cooling System	26.5 L
Hydraulic Reservoir	120 L
Transmission and Torque Converter	45 L
Axles, each	16 L



Guangxi Liugong Machinery Co., Ltd.

No. 1 Liutai Road, Liuzhou, Guangxi 545007, PR China
 T: +86 772 3886124 E: overseas@liugong.com
 www.liugong.com

Specifications and designs are subject to change without notice. Machines shown may include optional equipment.

11/2014 Designed by LiuGong