



## ECU-SF Technical Data.



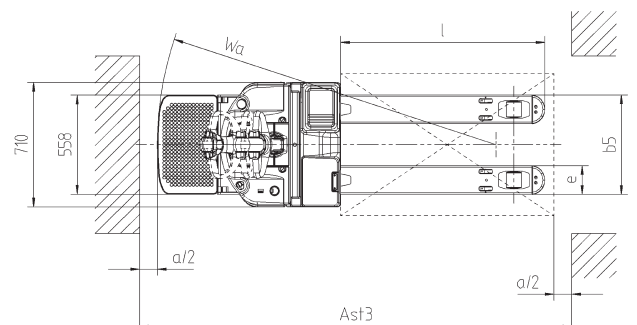
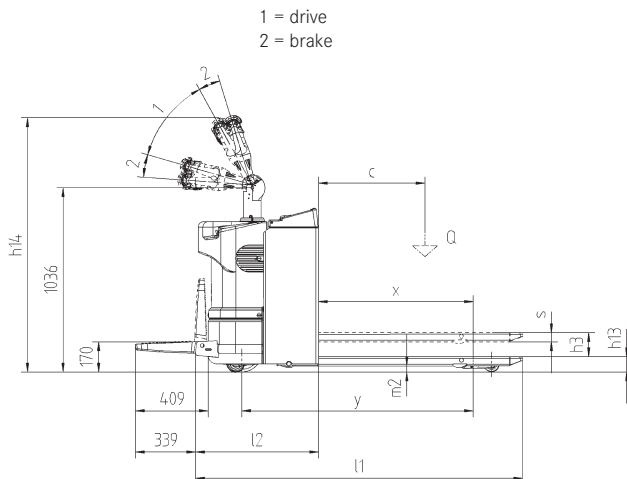
Characteristics	1.1	Manufacturer				STILL	
	1.2	Manufacturer's model designation				ECU-SF	
	1.3	Drive (electric, diesel, petrol LP Gas, mains electric)				Electric	
	1.4	Controls (hand, pedestrian, stand on, rider seated, order picker)				Stand-on/pedestrian	
	1.5	Capacity/load		Q	(t)	2	
	1.6	Load centre		c	mm	600 <sup>1</sup>	
	1.8	Load distance		x	mm	872	
	1.9	Wheel base		y	mm	1304	
	Weights	2.1	Truck weight (inc. battery)				kg
2.2		Axle load laden	drive end/load end			kg	1676/978
2.3		Axle load unladen	drive end/load end			kg	79/575
Wheels, chassis	3.1	Tyres (rubber, Vulkollan, pneumatic, polyurethane)					Polyurethane
	3.2	Tyre size	Drive end		mm		ø 85 X 90
	3.3	Tyre size	Load end		mm		ø 230/100
	3.5	Number of wheels (x = driven)	drive end/load end				1x-2/2
	3.6	Track width	Drive end	b <sub>10</sub>	mm		398
	3.7	Track width	Load end	b <sub>11</sub>	mm		/
	Basic dimensions	4.4	Lift			h <sub>3</sub>	mm
4.9		Height of tiller in driving position		min./max.	h <sub>14</sub>	mm	1145/1342
4.15		Lowered height			h <sub>13</sub>	mm	85
4.19		Overall length without load	Platform open/closed		l <sub>1</sub>	mm	1854/2180 <sup>1</sup>
4.20		Length including fork backs	Platform open/closed		l <sub>2</sub>	mm	704/1030
4.21		Overall width			b <sub>1</sub>	mm	710
4.22		Fork dimensions			s/e/l	mm	50/162/1150
4.25		Overall fork width			b <sub>5</sub>	mm	560
4.32		Floor clearance, centre of wheel-base			m <sub>2</sub>	mm	33
4.33		Working aisle width with 1000 x 1200 pallet crosswise	Platform open/closed		A <sub>st3</sub>	mm	1925 <sup>2</sup> /2604 <sup>2</sup>
4.34		Working aisle width with 800 x 1200 pallet lengthways (b <sub>12</sub> X l <sub>6</sub> )	Platform open/closed		A <sub>st3</sub>	mm	2125/2622
4.35	Turning radius	Platform open/closed		W <sub>a</sub>	mm	1597/1904	
Performance	5.1	Travel speed	laden/unladen			km/h	6/6 (7,5 <sup>3</sup> )
	5.2	Hoist speed	laden/unladen			m/s	0,034/0,045
	5.3	Lowering speed	laden/unladen			m/s	0,045/0,045
	5.7	Gradeability	laden/unladen			%	0,7 <sup>1,4</sup> /10,2 <sup>1,4</sup>
	5.8	Max. Gradeability kB <sub>5</sub>	laden/unladen			%	4,7 <sup>1,4</sup> /21,3 <sup>1,4</sup>
5.10	Service brake						electromagnetic
Electric motors	6.1	Drive motor, rating S2 = 60 min				kW	1,2
	6.2	Hoist motor, rating at S3				kW	1,2
	6.3	Battery to DIN 43531/35/36 A, B, C, No					DIN 43535 B
	6.4	Battery voltage, rated capacity C <sub>5</sub>				V/Ah	24/250
	6.5	Battery weight ± 5% (depending on manufacturer)				kg	220
Other	8.1	Drive control					AC-Controller
	8.4	Sound level, at driver's ear				dB (A)	< 70

<sup>1</sup> Applies to forks l = 1150 mm, b<sub>5</sub> = 560 mm.

<sup>2</sup> Applies to fork length l = 980 mm.

<sup>3</sup> In-raised platform and open guards.

<sup>4</sup> In-raised platform.



## Electric low lift pallet truck with driver's stand-on platform.

If the routes are longer and the handling capacity in conjunction with optimum ergonomics is to be maximized for the driver, low lift pallet trucks are not suitable. For such requirements the ECU-SF is available as the most compact low lift pallet truck with driver's stand-on platform.

With optional side guards maximized driving speed up to 7.5 km/h.

### Construction.

- The compact battery compartment comprises one continuous plate so provides optimal protection for the batteries.
- The robust bodywork is constructed from heavy duty polyurethane that is able to withstand impacts without permanent deformation or breakage.

### Steering.

The ECU-SF is fitted as standard with precise and user friendly electrical power steering.

### Tiller.

The tiller is made from one piece lightweight and high strength plastic material.

The shape together with its ergonomic grip and buttons facilitates can be easy operation by both right-handed and left-handed users. The switches are modern push buttons operating without mechanical contact.

### Drive.

The drive performance comes from an SEM drive motor (shunt technique) with an output of 1.2 kW.

The use of a motor with

Shunt technology and the use of special software allows:

- Variable speed control laden/unladen, even on ramps.
- Energy recovery during braking and thereby reducing their own consumption.

### Driver's stand-on platform.

The tread surface of the platform guarantees consists of a soft rubber material with non-slip surface structure, the highest comfort and optimum safety. The step height of the platform is very low. It amounts to only 170 mm. The optional side guards are at an ideal height to give the operator standing on the platform a safe and effective protection. The special shape of the side guard and the easy to use, robust system for opening and closing offers long lasting reliability and enables easy customization of the ECU-SF in different operating conditions.

### Brakes.

The ECU-SF has two different braking systems:

- A reverse current brake and
- An electromagnetic emergency brake controlled by a micro switch actuated at the two tiller end positions.

## Combi controller for driving and lifting.

The low lift pallet truck is equipped with a combined control system with MOSFET technology, which is responsible for controlling the drive motor and the pump motor. The serial data transmission using automotive components in the wiring harness ensures maximum reliability. The use of distance sensors instead of mechanical micro switches and the lower number of contactors complete the technical configuration, which is aimed at drastically reducing operating costs.

### Load rollers.

- Single polyurethane rollers are fitted as standard.
- Tandem rollers are optionally available.

### Drive wheel.

- Polyurethane is provided as standard for long service life.
- A solid rubber drive wheel is optionally available.

### Fork dimensions.

- Fork lengths are 800 mm, 980 mm, 1150 mm, 1450 mm and 1600 mm.
- Fork widths are 520 mm, 560 mm and 680 mm.

### Maintenance.

- Two lifting points are mounted on the frame to enable the equipment to be safely raised by crane hooks.
- All parameters relating to the drive, electrical braking system, and electrical functions are configurable and can be modified in accordance with customer-specific individual requirements through STILL Customer Services.

### Optional.

- Folding side guards to achieve higher driving speeds
- Cold store version down to minus 30 ° C.



## Your contact

STILL GmbH  
Berzeliusstraße 10  
D-22113 Hamburg  
Telephone: +49 (0)40/73 39-2000  
Telefax: +49 (0)40/73 39-2001  
info@still.de

**For further information please visit:**  
**[www.still.de](http://www.still.de)**

STILL Materials Handling Ltd.  
Aston Way, Leyland  
Lancashire PR26 7UX  
Telephone: +44 (0)1772 644300  
Telefax: +44 (0)1772 644303  
info@still.co.uk

**For further information please visit:**  
**[www.still.co.uk](http://www.still.co.uk)**