



H180-230HD-EC SERIES

EMPTY CONTAINER HANDLERS

**STRONG PARTNERS.
TOUGH TRUCKS.™**

WWW.HYSTER.COM

THE ANSWER FOR RELIABLE AND FAST CONTAINER HANDLING IS HERE

Moving millions of empty containers globally is big business. And like you, every container yard must bring down the cost per container moved to stay competitive in this growing, fast paced industry. What if your empty container handler allowed you to pick and stack faster, speeding up flow and accelerating productivity?

Hyster® H180-230HD-ECD9 empty container handlers can handle up to 23,000lbs capacity, allowing the trucks to easily pick two full-size reefer units at once. These trucks are designed to perform and last while handling the heaviest and offset double container loads. With trucks easily capable of double handling, imagine what they can do in your single handling application.

You will appreciate the performance from the powerful and efficient Cummins QSB 6.7L engine and reliable ZF WG 211 transmission; the productivity benefits that come from Hyster® single or double CANbus spreader, give you more options than ever to move additional containers in less time. Features such as powered pile slope, automatic extend-retract of the spreader, auto throttle up and true inching allow for safe, accurate and smooth positioning of containers - even up to 9-high. And because Hyster Tracker is now available on every Hyster® container handler, you will enjoy full visibility of your operation.





Nine models available, four single container handlers up to 8 high and five double container handlers up to 9 high. The Hyster on-demand load sensing system lowers fuel consumption and extends component life.

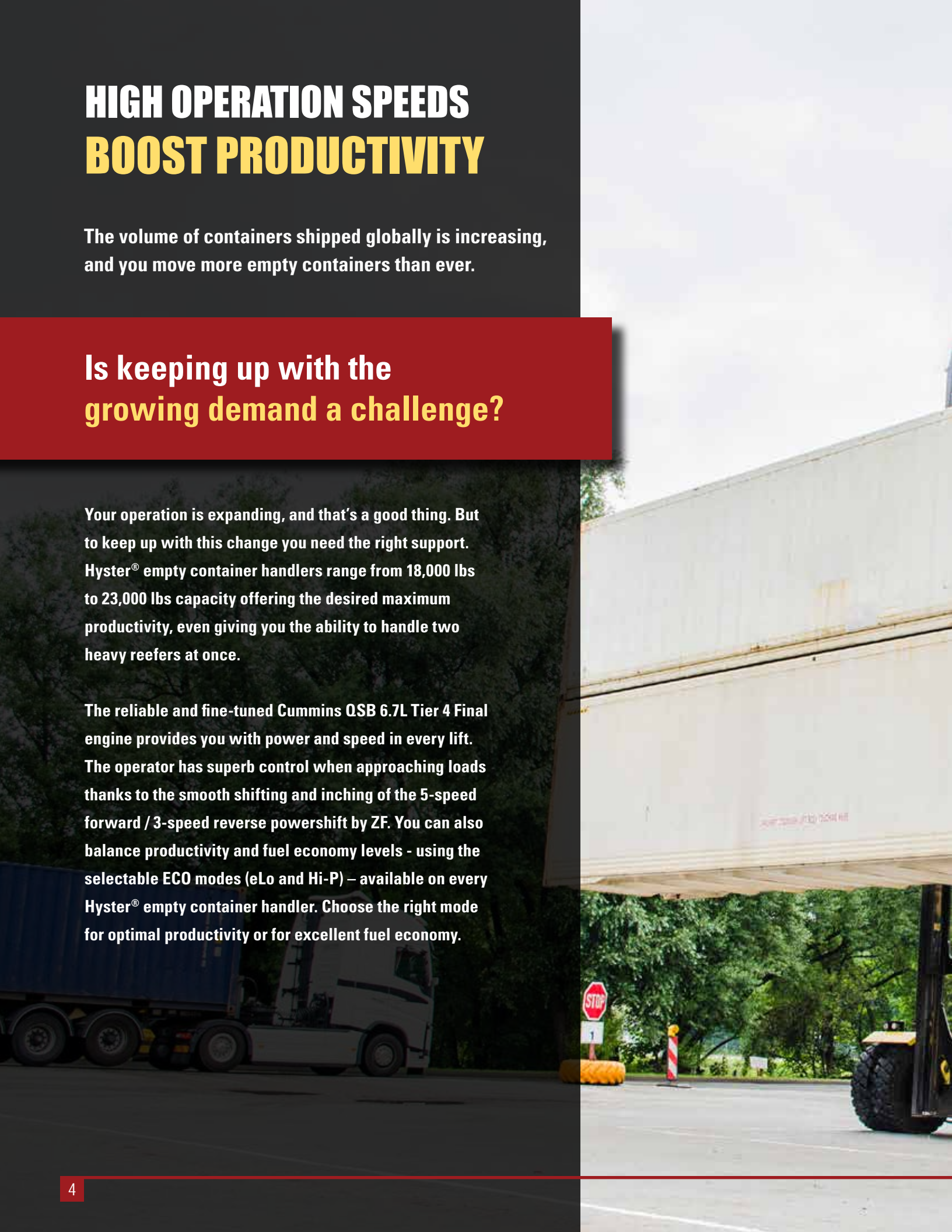
HIGH OPERATION SPEEDS BOOST PRODUCTIVITY

The volume of containers shipped globally is increasing, and you move more empty containers than ever.

Is keeping up with the growing demand a challenge?

Your operation is expanding, and that's a good thing. But to keep up with this change you need the right support. Hyster® empty container handlers range from 18,000 lbs to 23,000 lbs capacity offering the desired maximum productivity, even giving you the ability to handle two heavy reefers at once.

The reliable and fine-tuned Cummins QSB 6.7L Tier 4 Final engine provides you with power and speed in every lift. The operator has superb control when approaching loads thanks to the smooth shifting and inching of the 5-speed forward / 3-speed reverse powershift by ZF. You can also balance productivity and fuel economy levels - using the selectable ECO modes (eLo and Hi-P) – available on every Hyster® empty container handler. Choose the right mode for optimal productivity or for excellent fuel economy.



A comfortable operator is more productive. Convenient steps, stairs and a large cabin door make daily truck entry and exit to the spacious cabin convenient. Once inside, the operator finds the best position with seat and steering column adjustment. With the digital display the operator can easily check and adjust truck parameters. The cabin, the open design mast and smart placement of components provide good visibility.



KEY TO PRODUCTIVITY: THE RIGHT SPREADER FOR YOUR OPERATION

Your empty container yard operation requires solutions that fit your needs. And that goes beyond the lift truck. Choosing the right spreader with your Hyster® truck is key to cost effective container handling. And if you don't double pick yet, you could even discover a new, more efficient container handling approach utilizing the right Hyster® spreader for your operation.

A comprehensive selection of single and double handling spreaders featuring hook & side clamp, horizontal twistlock and vertical twistlock is available to suit your specific needs. With a variety of different container sensing systems available, nothing stops you from safely handling single/double containers of the most common types.

- The innovative spreader design enables the operator to see the twistlocks or hooks in every load position.
- The optional auto extend-retract feature further assists operators by adjusting the spreader to a 20ft or 40ft container size at the touch of a button.
- Operators can be supported by smart camera systems displaying key areas.
- Standard "reefer correction" sideshift to easily reposition offset loads.

CANbus control and digital operator display with twist lock indication make it easy and efficient for the operator to lock the load.

HIGH DEPENDABILITY FOR MORE UPTIME

Your customers trust you to provide excellent service, every time.

Should you not expect the same dependability of your container handler?

We think you should. Hyster® container handlers are designed and built to perform and last in the toughest container yards, offering effortless handling of any type container, every day. How can you tell? It shows in the robust and heavy-duty core of the machine, capable of lifting two 40ft reefers at once, even with both cooling units on the same side.

Your choice of a well-proven standard or wide drive axle configuration combined with the robust Hyster® steering axle provide excellent stability in every empty container stacking application. In addition, all axles feature reinforced heavy-duty rims.

The high strength mast accommodates heavier weights and can handle net loads of up to 23,000 lbs. For better performance and durability, the variable lap mast features a heavy duty 2-over-1 chain system. This new design enhances structural strength and significantly improves chain life, contributing to lowering your cost and reducing downtime.

The integrated routing of hydraulic hoses and cable groups to the inner mast section better protection increasing truck uptime.





LOW COST OF OWNERSHIP

A big part of reducing the cost per container moved is lowering your operating expenses. Hyster can help you do just that.

Unscheduled downtime can raise your cost and dampen your efficiency – big time.

At Hyster we believe it shouldn't. That's why Hyster empty container handlers offer strength and power with reliable, quality components. Not only will you move more containers in less time, you'll also notice longer service life of components and less downtime due to unplanned repair needs.

A well-tuned and fuel efficient powertrain lowers your fuel consumption and smart features such as on-demand hydraulics, on-demand cooling and selectable performance modes contribute further to fuel savings and extend component life.

Servicing your Hyster® empty container handler is easy. The daily checks and servicing are completed with ease with a minimum 500hr+ service interval (extended 10,000 hr service interval for the hydraulic oil using regular oil sampling).

Add in Hyster Tracker telematics to manage your empty container handler more effectively, maximize uptime and productivity, eliminate bottlenecks and minimize cost.

INNOVATIVE TRUCKS ENGINEERED TO MEET THE MOST DEMANDING APPLICATIONS

For more than 80 years, Hyster has been conquering the world's most demanding applications. In the 1920s Hyster started as a manufacturer of lifting machines used in the rigorous logging industry of the United States' Pacific Northwest. A few years later the first forklift trucks were invented and the Hyster brand quickly gained its reputation for rugged quality. Hyster® lift trucks are designed to lower your cost of operations. Every truck we make — whether powered by gasoline, LPG, diesel, electric, CNG, lithium-ion or hydrogen fuel cells — is purpose-built to excel in its application. Every truck is also backed by an unmatched network of specialists.



Dealer Network — Our Dealer Network can offer the expertise of fleet managers, parts suppliers, capital procurement specialists and trainers. Carefully chosen dealers fully understand customer applications, assist in selecting the right lift truck and provide fast, reliable support.



Hyster Fleet Services — Even if you operate other brands, we can manage your maintenance and replacement plan. We can offer complete fleet analysis, fleet history summary and a cost-effective proposal for replacement and scheduled maintenance.



Parts — With genuine Hyster® replacement parts and UNISOURCE™ parts for all makes of lift trucks, we are your one-stop source for lift truck parts. In fact, we offer more than 7 million part number crosses for most brands of materials handling and other in-plant mobile equipment.



Rental Products — When leasing or buying is not an option, we have access to a pool of short and long-term rental units. We'll help you maintain output in a cost-effective manner.



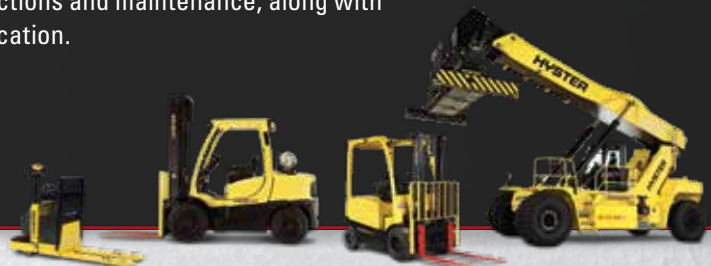
Special Products Engineering Department (SPED) — Different materials require different handling. That's why we can work with you to customize your lift trucks. From strobe lights to specially made forks, SPED has the tools to help you get the job done right.



Operator Training — Proper education in operating lift trucks minimizes the risk of injuries due to accidents while increasing productivity. Hyster offers OSHA-compliant materials that support the training of qualified operators.




Service — Your local Hyster® dealer offers a flexible, customized and comprehensive maintenance plan based on each lift truck's operation environment. Hyster service programs offer scheduled inspections and maintenance, along with quick, responsive service dispatched to your location.



Hyster Company
P.O. Box 7006
Greenville, North Carolina
27835-7006
Part No. H180-230HDEC/B
10/2017 Litho in U.S.A.

Visit us online at www.hyster.com or call us at **1-800-HYSTER-1**.

Hyster, , and STRONG PARTNERS. TOUGH TRUCKS. and MONOTROL are registered trademarks in the United States and certain other jurisdictions. Hyster products are subject to change without notice. Cummins, AxleTech or Kessler, Spicer, Dana, Elme and Danfoss are registered trademarks under their respective companies.

Trucks may be shown with optional equipment. © 2017 Hyster Company. All rights reserved.