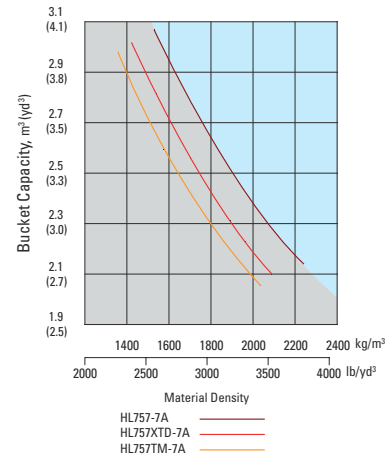


## Bucket Selection Guide



## Standard Equipment

### Electrical system

- Alternator, 70A
- Alarms, audible and visual
  - air filter clogging
  - transmission error
  - alternator voltage
  - brake oil pressure
  - engine oil pressure
  - parking brake
  - hydraulic oil temperature
  - coolant temperature
  - service brake oil pressure
- Batteries, maintenance-free 950 CCA, 12V, (2)

### Gauges

- engine coolant temperature
- fuel level
- hydraulic oil temperature
- speedometer
- transmission oil temperature
- voltmeter
- Horn, electric

### Indicator lights

- clutch cut-off
- high beam
- turn signal
- work light

### LCD Display

- clock and fault code
- operating hour counter
- engine rpm

- transmission gear range indicator
- job time and distance
- temperature(coolant, hydraulic oil, t/m oil)

### Lighting system

- 2 dome lights
- 2 stop and tail lights
- 4 turn signals
- brake lights(counter weight)
- license plate light
- head light
- 2 on front tower
- working lights
- 2 on front roof
- 2 on grill

### Switches

- buzzer stop
- clutch cut-off
- hazard
- ignition key, start/stop switch
- main light(illumination and head light)

- parking
- rear wiper & washer
- work light
- full automatic transmission

- Starter, electric
- Starting and charging system(24-volt)

### Cab

- Cab, ROPS/FOPS (sound suppressed and pressurized) with :

## Supplemental Specifications

Description	Change in operating weight kg(lb)	Change in static tipping load-straight kg(lb)	Change in static tipping load-40° turn kg(lb)
17.5-25 12PR L3	-248 (-547)	-184 (-406)	-163 (-359)
20.5-25 16PR L2	-64 (-141)	-48 (-106)	-42 (-93)
20.5 R25 XHA★	+507 (+1118)	+377 (+831)	+332 (+732)
20.5-25 16PR L5	+596 (+1314)	+442 (+974)	+392 (+864)

- cigar lighter & ashtray
- coat hook
- front/rear window defroster
- intermittent wiper and washer, front and rear
- personal storage space: console box cool & hot box holder, can and cup
- rear view mirrors (2 inside)
- rear view mirrors (2 outside)
- seat belt
- seat, adjustable suspension with armrests
- steering column, tilt and telescopic
- steering wheel with knob
- sunvisor(front window)
- tinted safety glass
- two door cab, fixed glass
- Magazine box
- Pedals
  - one accelerator pedal
  - one brake pedal
- Rubber floor mat
- Wrist rest

- 2operating mode (power & econo)
- Fan guard
- Fuel/water separator
- Muffler, under hood with large exhaust stack
- Precleaner, engine air intake
- Radiator (Deaeration type)
- Starting aid (air intake heater)
- Water sensor on fuel filter

- temperature sensing type
- Others
  - Articulation locking bar
  - Coolant level sight gauge
  - Counterweight
  - Door and cab locks, one key
  - Doors, service access(locking)
  - Drawbar with pin
  - Engine oil level dipstick gauge
  - Ergonomically located and slip resistant, left & right
    - handrails
    - ladders
    - platforms
    - steps
  - Fenders(front)
  - Guard, bucket cylinder rod
  - Hydraulic oil level sight gauge
  - License plate bracket
  - Lift and tie-down hooks
  - Loader linkage, sealed Z-Bar design
  - Steering stops, cushioned
  - Tires(20.5-25, 16PR, L3)
  - Transmission oil level dipstick gauge
  - Vandalism protection cap locks

- Power Train
  - Brakes : Service, enclosed wet-disc
  - Differential, limited slip(front/rear)
  - Parking brake
  - Torque converter
  - Transmission, computer-controlled, electronic soft shift, auto-shift and kick-shift features included
  - Transmission oil cooler
- Hydraulics
  - Boom lock safety valve
  - Boom kickout, automatic
  - Bucket positioner, automatic
  - Diagnostic pressure taps
  - Hydraulic oil cooler
  - Hydraulic system,
    - 2 spool, single lever, pilot control for boom and bucket actuation
  - Steering, load-sensing
  - Remote cooling fan, hydraulically-driven,
- Engine
  - Antifreeze
  - Engine, Cummins QSB6.7
  - Low Emission Diesel, Tier-III
  - Engine enclosure, lockable
  - Engine fuel priming pump

## Optional Equipment

### 24-volt to 12-volt DC converter

- Air condition :
  - air conditioner
  - air conditioner with heater
  - heater

### Alarm, back-up

- Beacon light, rotating
- Cutting edge, bolt-on type
- Differential, limited slip(front/rear)
- Emergency steering system
- Fire extinguisher

### Fuel warmer

- High lift arrangement with optional counterweight, 820kg (1810 lb)
- Hourmeter
- Hydraulic control, 2 levers
- Hydraulic control, 3 levers
- Hydraulic arrangement, 3-valve
- Lighting, auxiliary, 4 on roof
- Main disconnect switch
- Mud guard

### Open Canopy (None-ROPS)

- Operator suit
- Radio cassette player
- Ride control system
- Seat
  - 2" static seat belt & adjustable mechanical suspension(vinyl)
  - 3" retractable seat belt & adjustable mechanical suspension

### 3" retractable seat belt & adjustable air suspension

- Tires :
  - 17.5 - 25, 12PR, L3
  - 20.5 - 25, 16PR, L2
  - 20.5 R25 XHA★
  - 20.5 - 25, 16PR, L5
- Tool kit
- Tooth, 1 piece, bolt-on type
- Tooth, 2 pieces, bolt-on type
- Guards

### crankcase

- transmission
- Wheel chock
- Window, sliding (left and right side)
- Reversible cooling fan

Standard and optional equipment may vary. Consult your Hyundai dealer for more information. The machine shown may vary according to territorial specification.

## HYUNDAI HEAVY INDUSTRIES CO.,LTD. CONSTRUCTION EQUIPMENT

Head Office(Sales Office)  
1 JEONHA-DONG, DONG-GU, ULSAN, KOREA TEL : (82) 52-202-7970, 7729, 0971 FAX : (82) 52-202-7979,7720

U.S. Operation : Hyundai Construction Equipment U.S.A., Inc.  
955 ESTES AVENUE, ELK GROVE VILLAGE, IL, 60007, U.S.A. TEL : (1) 847-437-3333 FAX : (1) 847-437-3574

European Operation : Hyundai Heavy Industries Europe N.V.  
VOSSENDAAL 11, 2440 GEEL, BELGIUM TEL : (32)14-56-2200 FAX : (32)14-59-3405

India Operation : Hyundai Construction Equipment India PVT., Ltd.  
PLOT NO.A-2, CHAKAN INDUSTRIAL AREA, VILL.- KHALUMBRE, TALUK.- KHED., DIST.- PUNE 410 501, INDIA  
TEL : (91) 21-3530-1700 FAX : (91) 21-3530-1712

### PLEASE CONTACT

www.hyundai-ce.com

2009. 05 Rev.2



Some of the photos may include optional equipment.

HYUNDAI WHEEL LOADER Applied Tier 3 Engine

# HL757-7A

HYUNDAI HEAVY INDUSTRIES CO.,LTD.

We build a better future



■ Some of the photos may include optional equipment.

# Hardworking Hyundai Loaders

## New Generation - **HL757-7A**



Meet the new generation wheel loader in Hyundai.

**The HL757-7A will give you the satisfaction in higher power, lower fuel consumption, more comfort and lower emission .**

**Come and experience what Hyundai has created for you by bringing power and technology.**

### Engine

- Tier-3 Low Emission Certificated
- Electronic Engine Control System
- Engine Protection & Selfdiagnosis System
- Max Power 187 HP
- 2 Operating Mode : Power & Econo

### Transmission

- 2 Automatic Selection Modes
- 2 Kick Down Function Modes
- AEB Function

### Axle

- Limited Slip Differential
- Self-Adjusting & Wheel Speed Brake
- Improved Oil Circuit & Lubrication



Some of the photos may include optional equipment.

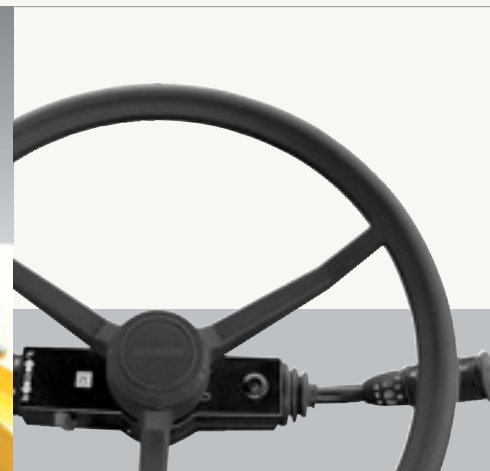
New Generation, Innovative Solution in Construction **HL757-7A**

**The Centralized Display & Switch Panel**

The centralized digital display shows the status and conditions of your machine at a glance. Easy-to-read gauges with an instrument panel provide constant, and accurate information.



Some of the photos may include optional equipment.



**Control Center**

The all-new, deluxe operating space is engineered with 3-D modeling for your ultimate control center. The wide, tinted and laminated front windshield has no framing cutting through to ensure excellent visibility.

**Adjustable steering column**



**Joystick Controls**

Pilot-operated controls for bucket operation by the Joystick are easy and comfortable to operate.



**Finger Control Lever (Option)**



**FNR Switch on Joystick Control Lever**

It is possible to change the direction of travel as well as controlling Hydraulic system. (Option)

**Full automatic shift lever**



A single lever on the left side of the steering column gives the operator fast, easy control of speed and direction. Push the lever forward to go forward, pull it back for reverse. Travelling is automatically changed from 1st stage to given stage according to travel speed and tractive effort. The operator can select two kinds of automatic modes (1st ↔ 4th, 2nd ↔ 4th). These exclusive features contribute to a step-up in productivity and reduction of operator's fatigue.

**The Air Conditioning and Heating System**

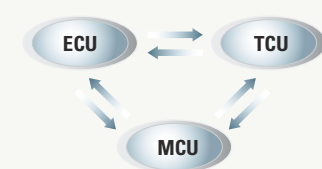


The operator can easily control the temperature and air flow. The defroster on the front windshield and rear window makes it convenient for winter working usage.



- ① Power Outlet & Cigar Jack
- ② Cup Holder & Console Box
- ③ Magazine Box
- ④ Cool & Hot Box

**Up-to-Date-technology CAN System**



Engine control Unit(ECU), Transmission control Unit(TCU) and Machine control Unit(MCU) realize the optimal performance through the mutual CAN communications.

**Ride control system(Option)**

Ride control system functions such as shock absorbers gives smooth operation without losing of the load even over a rough terrain condition. Therefore the system allows faster travelling and improved safety and productivity.



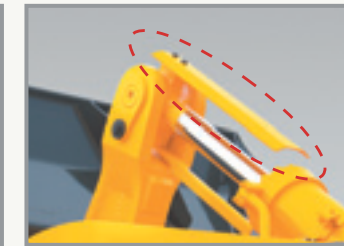
■ Some of the Photos may include optional equipment.

## A Well Rounded System

Maximize the productivity of your business with HL757-7A. With our vast experience in the production of construction equipment, Hyundai is able to meet the demands of consumers.

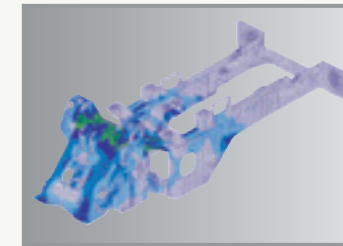


**Left and right access door**



**Bucket cylinder guard**

This guard helps to prevent possible damage from load material.



**High-rigidity frames**

Front and rear frames are designed for work in the toughest applications to provide high rigidity for the power train and loader equipment. The high-rigidity frames, together with the reinforced loader linkage, resist loading stress and shock.



**2 Operating mode**

- ▶ **Econo Mode**  
Maximum fuel efficiency for general loading
- ▶ **Power Mode**  
Maximum power output for hard digging or climb hill

New Generation, Innovative Solution in Construction **HL757-7A**



■ Some of the Photos may include optional equipment.

## CUMMINS QSB6.7



The CUMMINS QSB6.7 electronic control engine combines full-authority electronic controls with the reliable performance. The combination of high pressure common rail system and advanced in-cylinder combustion technology results in increased power, improved transient response and reduced fuel consumption. And the QSB6.7 used advanced electronics controls to meet the emission standards (EPA Tier3, EU StageIII-A)



**Battery master switch(Option)**

A master switch disconnects the battery power to protect the electrical system from excessive electrical drainage.



**Sealed loader linkage**

Fully protected fitting and the sealed loader linkage with dust seals and o-ring will extend lubrication intervals remarkably.



**Frame lock**

Machine can be locked by this locking bar to prevent movement during transportation.

## Multi Function Transmission



The newly developed transmission control represents the beating heart of transmission. The hydraulic system for gearshifts is working with proportional valves, which allows very precise control of the clutches. For each gearchange, the control unit performs a monitoring function to ensure that the specified shift curve is adhered to the range, and readjusts the shift pressure applied to the clutches accordingly. This results in smooth gearshifts-even under the load-with no traction interruptions. This helps to avoid standstill of the vehicle, sudden load changes and torque peaks under all conditions, for example application on steep terrain with full load. In addition, there is the option for the driver to make gearshifts manually.

## Axle

### Improved Axle

- Limited slip differential in standard equipment allows easy driving on variable ground condition.
- Self adjusting brake which regulate the disk clearance automatically can maintain optimum brake performance.
- Due to improved internal oil circuit, durability of axle is increased.



# Accessible and Serviceable

New Generation, Innovative Solution in Construction **HL757-7A**

An ideal arrangement of component parts ensures easy access and convenience for maintenance. Highly accessible engine compartment assures fast and efficient maintenance.



### Accessible grease fittings

Grease fittings are highlighted and available around the machine for the fast access when doing your service checks.

### Simple air filter replacements

The air cleaner is easily replaceable by turning the wing nut on the outer shell counterclockwise.

### Chromium - Plated PIN is applied

With the application of Chromium Plated PIN, durability and precision are improved and the life cycle became longer.

### Remote type drain port

It is now easier to change your engine oil, coolant and hydraulic oil with the remote drain port.



### Hydraulic tank

The hydraulic tank is located behind the cab to increase the accessibility of hydraulic hoses and pipings.



### Oil sight gauge

The hydraulic oil check sight gauge is installed on the side of the hydraulic tank for the convenient checks from ground level.



### Transmission oil port

The transmission oil change port is also located for with open accessibility and comes with an anti-vandalism lock for your machine protection.



Some of the Photos may include optional equipment.



### Central electric controllers & Fuse box

Electric controllers for Hyundai loader are centralized to improve serviceability. A concentrated fuse box for easy inspection.



### Cabin air fresh filter

The internal pressure is maintained to be slightly higher than that of outside to exclude dust and to reduce noise levels.



### Coolant sight gauge

The coolant sight gauge is installed on the top of radiator for convenient checks of coolant level.

### Easy Access to All Engine Accessories

Here you find the engine oil check, and the main and pre-filters. The large access engine-side-panels permit easy and safe inspections. The fuel and oil filters can be spun on and off for quick replacements.



### Up-to-date hydraulic remote cooling fan



The minimum fuel consumption and low noise is realized by applying hydraulic cooling fan that senses coolant temperature, intake air temperature, transmission oil temperature and hydraulic oil temperature.  
**Reversible cooling fan (Option)**  
Optional reversible cooling fan that ejects debris in the radiator and cooler.

## Specification

### Engine

<b>Maker/Model</b>	CUMMINS QSB6.7	<b>Bore x Stroke</b>	107 mm (4.21") x 124 mm (4.88")
<b>Type</b>	Watercooled, 4 cycle Diesel, 6-Cylinders in line, direct injection, turbocharged, charge aircooled and low emission	<b>Displacement</b>	6.7 l (409 cu in)
<b>Gross power</b>	173HP(129 kW) / 2,100rpm	<b>Compression ratio</b>	17.2 : 1
<b>Net power</b>	164HP(122 kW) / 2,100rpm	<b>Air cleaner</b>	Dry, dual elements
<b>Maximum power</b>	187HP(133 kW) / 1,800rpm	<b>Alternator</b>	24V, 70 Amp
<b>Maximum torque</b>	83kg-m(600 lb-ft) / 1,400rpm	<b>Battery</b>	2 x 12V, 130 Ah.
<b>No. of cylinders</b>	6	<b>Starting motor</b>	24V, 3.7 kW

※ Net power output of standard engine as installed in this vehicle(per SAE J1349) complete with fan, air cleaner, alternator, water pump, lubricating oil pump and fuel pump. No derating for continuous operating required up to 3,048m (10,000ft). This engine meets the EPA(Tier III) / EU(Stage III-A) Emission regulation.

### Transmission

<b>Torque converter type</b>	3-elements, single-stage single-phase	<b>Travel speed</b>	<b>km/h (mph)</b>
<b>Stall torque ratio</b>	2.527 : 1	<b>Forward</b>	6.9(4.3)
<b>Tire</b>	20.5-25, L3		11.4(7.1)
			22.6(14.0)
			35.6(22.1)
		<b>Reverse</b>	7.2(4.5)
			12.0(7.5)
			23.7(14.7)

※ Full automatic power shift, countershaft type with soft-shift in range and direction. Properly matched torque converter to engine and transmission for excellent working ability

### Axles

<b>Drive system</b>	Four-wheel drive system	<b>Hub reduction</b>	Planetary reduction at wheel end
<b>Mount</b>	Rigid front axle and oscillating rear axle	<b>Differential</b>	Limited Slip
<b>Rear axle oscillation</b>	± 13° (total 26°)	<b>Reduction ratio</b>	23.680

### Hydraulic System

<b>Type</b>	Open-centered, tandem circuit system. Pilot-operated controls. Closed with pressure and vacuum relief.	<b>Bucket Controls</b>	Type	Pilot operated lift and tilt circuit, single-lever(joystick) control standard.
<b>Pump</b>	Helical gear type, 230 liters/min (58.1 gal/min)@governed rpm	<b>Lift Circuit</b>		The valve has four functions ; raise, hold, lower and float. Can adjust automatic kickout from horizontal to full lift.
<b>Control Valve</b>	Two function valve with single or two lever controls : Optional third-function valve with auxiliary lever.	<b>Tilt Circuit</b>		The valve has three functions ; tilt back, hold and dump. Can adjust automatic bucket positioner to desired load angle.
<b>Relief Valve Setting</b>	210 kg/cm <sup>2</sup> (2,990 psi)	<b>Cylinder</b>	Type : Double acting No. of cylinders-bore x stroke; Lift 2-140 mm(5.5") x 750 mm(29.5") Tilt 1-160 mm(6.3") x 475 mm(18.7") HL757-7A HL757TM-7A 2-120 mm(4.7") x 755 mm(29.7")	
<b>Pilot System Type</b>	Pilot oil pressure is generated by the pilot oil supply unit.	<b>Cycle Time</b>	HL757-7A / HL757XTD-7A	HL757TM-7A
<b>Relief Valve Setting</b>	30 kg/cm <sup>2</sup> (427 psi)	<b>Raise(with load)</b>	6.1 sec	6.1 sec
		<b>Dump</b>	1.3 sec	1.7 sec
		<b>Lower(empty)</b>	3.1 sec	3.1 sec
		<b>Total</b>	10.5 sec	10.9 sec

## Specification

### Brakes

<b>Service Brakes</b>	Hydraulically actuated, wet disc brakes actuate all 4 wheels independent axle-by-axle system. Self adjusting & wheel speed brake Single pedal braking including clutch cut off switch.
<b>Parking Brake</b>	Spring-applied, hydraulically released disc brake on transmission
<b>Emergency Brake</b>	When brake oil pressure drops, indicator light alerts operator and parking brake automatically applies.

### Steering System

<b>Type</b>	Full hydraulic power steering
<b>Pump</b>	Helical gear type, 110 liters/min (29.1 gal/min)@governed rpm
<b>Relief Valve Setting</b>	210 kg/cm <sup>2</sup> (2,990 psi)
<b>Cylinder</b>	Type Bore x Stroke
	Double acting 70mm(2.8") x 436mm(17.2")
<b>Steering Angle</b>	40°(each direction)

#### Features

- Center-point frame articulation.
- Load-sensing, pressure-compensated system.
- Steering-wheel operated metering pump controls flow to steering cylinders.
- Tilt and telescopic steering column.

### Service Refill Capacities

<b>Fuel tank</b>	295 liters (78 USgal)
<b>Cooling system</b>	35 liters (9.2 USgal)
<b>Crankcase</b>	16 liters (4.2 USgal)
<b>Transmission</b>	43 liters (11.4 USgal)

<b>Front axle</b>	29 liters (7.7 USgal)
<b>Rear axle</b>	24 liters (6.3 USgal)
<b>Hydraulic tank</b>	130 liters (34.4 USgal)
<b>Hydraulic system (including tank)</b>	175 liters (46.3 USgal)

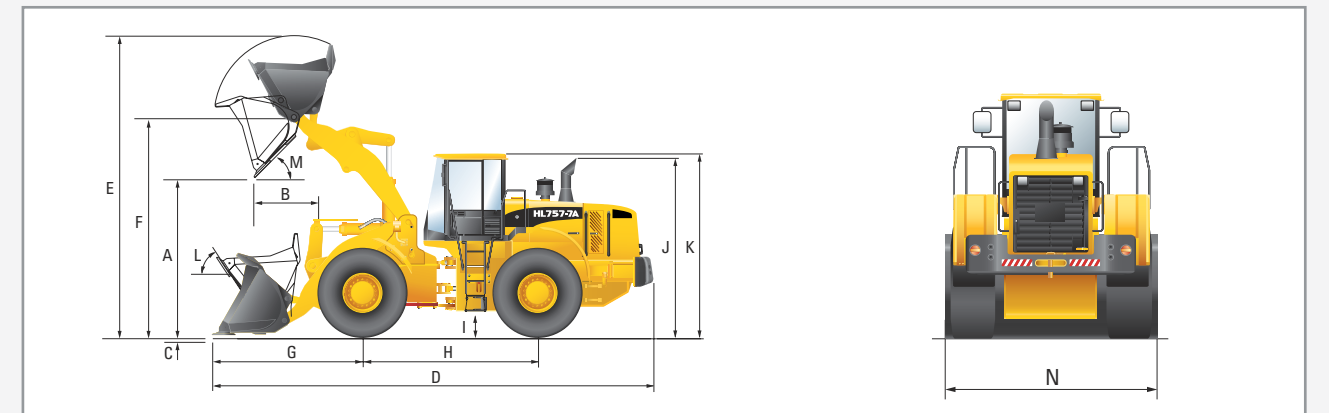
### Overview

Description	UNIT	HL757-7A	HL757XTD-7A	HL757TM-7A	
Operating weight	kg (lb)	14,500 (31,970)	15,000 (33,070)	15,000 (33,070)	
Bucket capacity	Heaped	m <sup>3</sup> (yd <sup>3</sup> )	2.7 (3.5)	2.7 (3.5)	2.5 (3.3)
	Struck	m <sup>3</sup> (yd <sup>3</sup> )	2.3 (3.0)	2.3 (3.0)	2.1 (2.8)
Breakout force-bucket	kg (lb)	12,720 (28,040)	12,560 (27,690)	13,020 (28,700)	
	kg (lb)	11,300 (24,900)	10,010 (22,070)	9,740 (21,470)	
	kg (lb)	9,920 (21,870)	8,750 (19,290)	8,520 (18,780)	

### Tires

<b>Type</b>	Tubeless, loader design tires
<b>Standard</b>	20.5-25, 16 PR, L3
<b>Options include</b>	17.5-25, 12 PR, L3 20.5-25, 16 PR, L2 20.5 R25 XHA* 20.5-25, 16 PR, L5

## Dimensions



Description	UNIT	HL757-7A	HL757XTD-7A	HL757TM-7A
<b>Bucket Type</b>	General purpose bolt-on cutting edge			
<b>A. Dumping clearance at max. height and 45° dump angle.</b>	mm (ft-in)	2,860 (9' 5")	3,270 (10' 9")	2,900 (9' 6")
<b>B. Reach</b>	Full lift	mm (ft-in)	1,040 (3' 5")	1,060 (3' 6")
	7ft height	mm (ft-in)	1,590 (5' 3")	1,950 (6' 5")
<b>C. Digging depth</b>	mm (in)	95 (3.7")	130 (5.1")	97 (3.8")
<b>D. Overall length</b>	on ground	mm (ft-in)	7,450 (24' 7")	7,880 (25' 10")
	at carry	mm (ft-in)	7,390 (24' 5")	7,850 (25' 9")
		mm (ft-in)	7,390 (24' 5")	7,480 (24' 6")
<b>E. Overall height (fully raised)</b>	mm (ft-in)	5,250 (17' 3")	5,650 (18' 6")	5,330 (17' 6")
<b>F. Bucket pivot max. height</b>	mm (ft-in)	3,910 (12' 10")	4,320 (14' 2")	4,020 (13' 2")

Description	UNIT	HL757-7A	HL757XTD-7A	HL757TM-7A
<b>G. Front overhang</b>	mm (ft-in)	2,520 (8' 3")	2,930 (9' 7")	2,670 (8' 9")
<b>H. Wheelbase</b>	mm (ft-in)	3,030 (9' 11")	3,030 (9' 11")	3,030 (9' 11")
<b>I. Ground clearance</b>	mm (ft-in)	410 (1' 4")	410 (1' 4")	410 (1' 4")
<b>J. Height over exhaust</b>	mm (ft-in)	3,130 (10' 3")	3,130 (10' 3")	3,130 (10' 3")
<b>K. Height over cab</b>	mm (ft-in)	3,300 (10' 10")	3,300 (10' 10")	3,300 (10' 10")
<b>L. Roll-back angle</b>	on ground	deg	41	41
	at carry	deg	46	48
<b>M. Dump angle</b>	deg	47	47	50
<b>Clearance circle</b>	mm (ft-in)	12,350 (40' 6")	12,720 (41' 9")	12,380 (40' 7")
<b>N. Overall width</b>	mm (ft-in)	2,740 (9')	2,740 (9')	2,740 (9')