

**Adaptability and performance**

- Optimised load rating
- Hydraulic control for standard accessories
- Tilt corrector as standard

Power and precision

- Standard hydrostatic transmission
- Simultaneous and proportional controls of all 4 movements of the boom with flow sharing

Safety and reliability

- Standard rear axle locking
- Dangerous movements cut out switch



Placing height : 14m

Maximum lift capacity :
4000 kg

Haulotte 
GROUP
More than lifting



HTL 4014



TELEHANDLER

Haulotte

GROUP

Placing height : 14m

Maximum lift capacity : 4000 kg



PERFORMANCES

Maximum lift capacity	4000 kg
Lift capacity to full height	3000 kg
Lift capacity at full reach	1000 kg
Maximum fork height	14.1 m
Reach at maximum fork height	1.5 m
Maximum forward reach	9.8 m



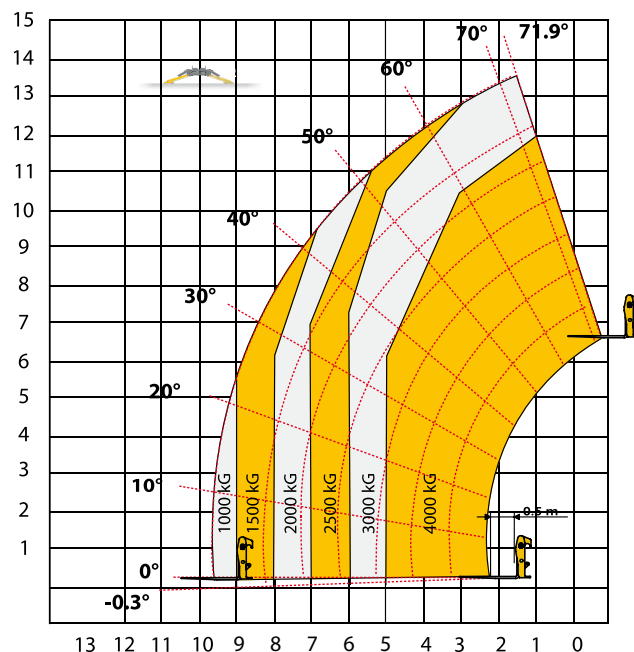
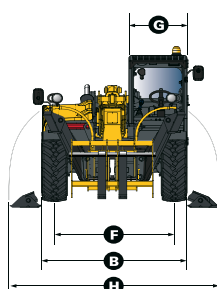
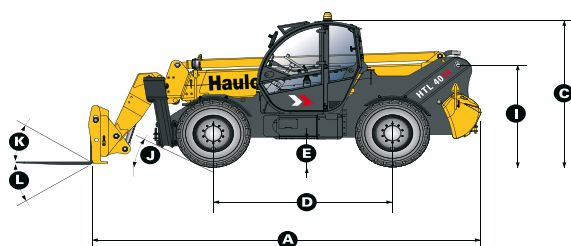
DIMENSIONS

A Length	6.47 m
B Width	2.43 m
C Height	2.67 m
D Wheelbase	2.9 m
E Ground clearance	50 cm
F Track width	1.93 m
G Cab width	0.96 m
H Overall width - stabilizers down	3.34 m
I Height to high boom pivot	1.75 m
J Approach angle	29°
K Upper rotation of forks	18°
L Lower rotation of forks	104°
Weight with forks	12180 kg
Tyres type	18 - 22,5 TMR4



ENGINE

Engine model	Deutz BF04M2012
Engine Capacity	4038 cm3
Engine power output	74,9 kW / 102 CV
Engine torque	0
Transmission type	Hydrostatic
Fuel tank	132.5 l
Engine oil	10 l



STANDARD EQUIPMENT

- Hydrostatic transmission with variable capacity pump and engine
- 4 wheel drive and steer
- Fuel filter with water separator
- Load sensing equipment pump
- Flow-Sharing electrically controlled controls
- Proportional controls for mast / telescopic arm / excavation and accessories movements
- Safety valves on hydraulic jacks
- Possibility to combine mast/telescopic boom/excavation and accessories movements
- Accessories hydraulic system reaches top of arm
- Cut-off of dangerous movements when overloaded
- Tilt corrector: +/- 10°
- Long stabilizers and large footplates for greater stability
- ROPS/FOPS cabin with heating and ventilation
- Hydraulic axle locking

OPTIONS AND ACCESSORIES

- Cold Weather Package
- Biodegradable oil
- Cold environment oil
- Hot environment oil
- Air conditioning
- Working lights
- Metal windscreen protector (FOPS)
- 4-in-1 bucket: 1m3 or 0.75m3

