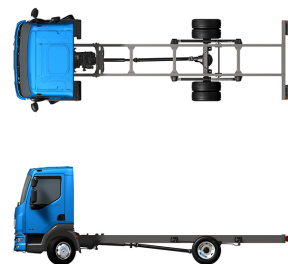


Specification sheet

LF 150

FA 4X2 Rigid, 08t City Chassis/Bdy



ENGINES

- LF 150 PX-4 (115 kW / 156 hp)
- LF 170 PX-4 (127 kW / 172 hp)

GVM¹⁾

7500 kg

Max. front 3600 kg

Max. rear 5000 kg

GCM²⁾

7500 kg

016F2602BAAA - 202041P - 18-06-2020

DAF Trucks Ltd, UK, Haddenham, HP17 8LJ, www.daf.co.uk

CAB EXTERIOR

Day Cab with steel bumper, tinted glass and electric window openers. Main mirrors and wide angle mirrors electrically heated. Cab width 2130 mm.; Electrically adjustable mirrors; Mirror brackets, body 2.50-2.60 m; Front view mirror.

Optional

- | | |
|---|--|
| 00980 External sun visor smoke translucent | 09282 Mirror brackets, body 2.30-2.40 m |
| 07343 Kerb view window co-driver door | 09283 Mirror brackets, body 2.40-2.50 m |
| 00915 Side no glass / rear single glass | |

AERODYNAMICS

Optional

- | | |
|------------------------------------|--|
| 09287 Side collars prepared | 03574 Side collars for aerodynamic body |
| 04906 Side collars | 07093 Side collars short (set) |

COLOURS

; Head lamp panel and bumper: Stone Grey; Cab steps and wing Stone Grey; Chassis colour grey..

Optional

- | | |
|---|--------------------------------------|
| 06485 Head lamp panel and bumper: cab colour | 16153 Cab and chassis colours |
| 01109 Cab steps and wing in cab colour | |

CAB INTERIOR

Right-hand drive (RHD); Mechanically adjustable steering column; Driver seat: air suspended; Co-driver seat: fixed velour; Storage box on engine tunnel.

Optional

- | | |
|---|---|
| 01846 Left-hand drive (LHD) | 00072 Dual mate seat, velour |
| 09271 Steering wheel, leather, colour black | 02600 Co-driver seat: air suspended |
| 03516 Pneumatically adjustable steering column | 09106 Dual mate seat, luxury version |
| 06012 Co-driver seat: fixed vinyl | 00967 Seat belts red |
| 03376 Dual mate seat, vinyl | 02213 Air conditioning |

COMMUNICATION AND DRIVING MANAGEMENT

FMS connector prepared; Tachograph digital, Stoneridge 1C; Scale speedometer m/h + km/h; Adaptive Cruise Control with FCW and AEBs-CM2.

Optional

- | | |
|---|---|
| 02549 Scale speedometer km/h | 16155 Audio equipment, makes and types |
| 01936 Scale speedometer km/h + m/h | 07261 TruckPhone |

SAFETY AND SECURITY

Vehicle Stability Control (VSC); Basic engine immobiliser system.

Optional

- | | |
|--|---|
| 08631 Air bag (driver) and 2 seat belt tensioners | 06634 Immobiliser 5 minutes and alarm (SCM BV03-B2) |
| 01725 Reverse warning | 06635 Immobiliser 15 minutes and alarm (SCM BV03-B3) |
| 06633 Immobiliser 5 minutes (SCM BV03-B1) | 16156 EC-ADR packages |

SUSPENSION AND AXLES

Front: 3.60 t, parabolic, F36; Rear: 5.00 t, parabolic, SR5.10.

Optional

- | | |
|-------------------------------|---|
| 01372 Rear springs air | 08031 Rear springs parabolic, Heavy Duty |
|-------------------------------|---|

WHEELS AND TYRES

Front axle 1: 215/75R17.5; Rear axle 1: 215/75R17.5; Goodyear; Wheel protection rings silvergrey.

Optional

- | | |
|---|-----------------------------------|
| 06764 Wheel protection rings black | 16152 Tyre makes and types |
|---|-----------------------------------|

DRIVELINE

Engine PX-4, 4 cylinder diesel engine, 3.8 litres. Output 115 kW (156 hp) at 2600 rpm. Max. torque 500 Nm at 1200-1900 rpm.; Exhaust emission Euro 6; Manual gearbox, 5 speeds; Gearbox ratio 5.76-0.77; Rear axle ratio 3.73.

Optional

- | | |
|---|--|
| 07383 Engine PX-4, 127 kW/172 hp. Cab Badge: 170 | |
|---|--|

BRAKE SYSTEM

Exhaust brake.

CHASSIS

Wheelbase 3.55 m / rear overhang 1.87 m; Side member height 210 mm; EAS unit right, discharge right rearward; Plastic fuel tank 110 l; Spray suppression; Tank for AdBlue® 25 l, right-hand side chassis.

Optional

- | | |
|--------------------------------------|--|
| 02001 Plastic fuel tank 155 l | 07071 Spare wheel carrier right-hand side |
| 02124 Plastic fuel tank 185 l | 03323 Rear light with LEDs |

DRAWBAR AND TRAILER EQUIPMENT

Closing member.

BODIES AND PREPARATIONS FOR BODYING

Application connector on the cab front.

Optional

- | | |
|---|--|
| 00126 Body attachment BAM 1, consoles type B | |
|---|--|

ELECTRICAL POWER SUPPLY

Alternator 80 A, batteries 2x 125 Ah..

Optional

- | | |
|-------------------------------|--------------------------------|
| 01897 Alternator 100 A | 08797 Batteries 2x175Ah |
|-------------------------------|--------------------------------|

GVM AND GCM

Chassis weight related technical GVM max 7500 kg; Driveline related technical GCM equal to GVM.

APPLICATION CONDITIONS

Moisture separator, unheated; Air intake low.

Optional

- | | |
|---|---------------------------------|
| 04767 Moisture separator, heated | 04987 Radiator flyscreen |
|---|---------------------------------|

SERVICE AND MAINTENANCE

Standard Warranty takes care of 1 year complete vehicle, 2nd year driveline and 1st year breakdown.; ITS service.

VEHICLE DELIVERY

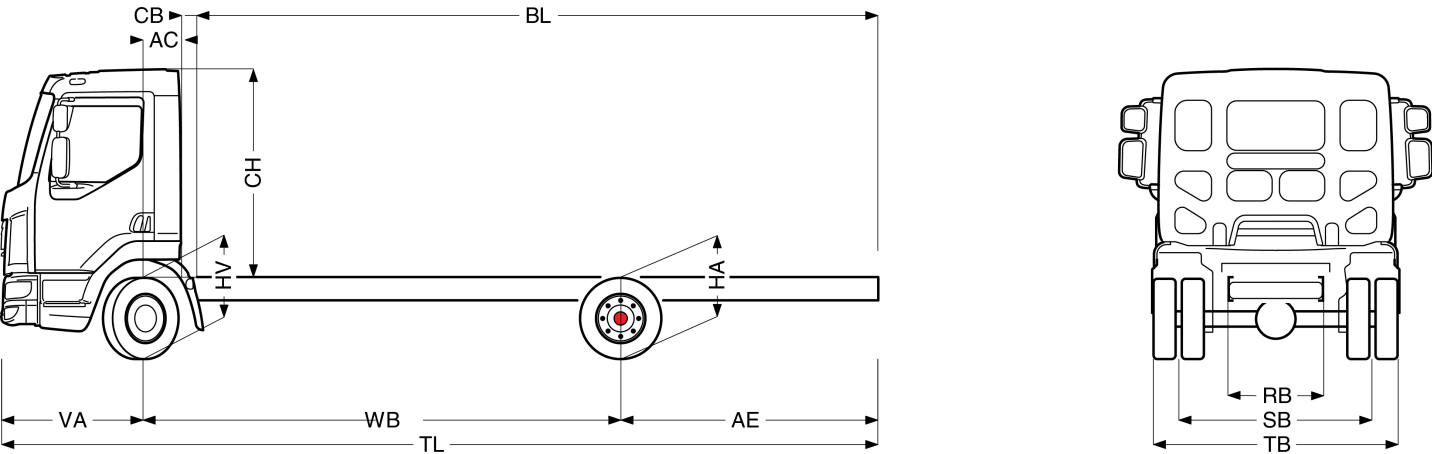
Standard toolkit.



Go to [DAF.com](https://www.daf.com) to configure your own perfect DAF.

LF 150

FA 4X2 Rigid, 08t City Chassis/Bdy



Wheelbase - AE		Unladen weight ¹⁾			Gross Carrying Capacity			Variable dimensions									
WB	AE ²⁾	Front	Rear	Total	Front	Rear	Total	AC	CB ⁸⁾	CH ⁷⁾	BL ⁹⁾	BL	TL	HA ⁹⁾	HA ¹⁰⁾	TK ¹¹⁾	TW ¹²⁾
3.55	1.87	2408	910	3319	1192	4090	4181	0.33	0.13	1.84	4.16	6.02	6.70	0.91	0.79	11.75	13.12
4.30	2.32	2423	937	3360	1177	4063	4140	0.33	0.13	1.84	5.24	7.51	7.90	0.91	0.79	13.58	14.99
4.65	2.65	2427	960	3388	1173	4040	4112	0.33	0.13	1.84	5.74	8.20	8.58	0.91	0.79	14.44	15.86

OTHER DIMENSIONS	VA: 1.28	HV ¹³⁾ : 0.79	HV ¹⁴⁾ : 0.75	RB: 0.86	SB: 1.74	TB ¹⁵⁾ : 2.20
------------------	----------	--------------------------	--------------------------	----------	----------	--------------------------

1) GVM in conformity with registration documents.

2) GCM in conformity with registration documents.

3) Axle load with standard tyre size.

4) Chassis and cab weight calculated with: Standard specification items only with 110 litres of fuel, 25 litres of AdBlue® and driver of 90 kg, tolerance ± 3%. Changing of the specification can have major impact on vehicle weight.

5) Other AE dimensions may be available for shown WB. Modify rear overhang to the calculated body length.

6) CB is based on standard air intake and/or exhaust.

7) Cab height is measured from frame member to closed cabin roof hatch.

8) Calculate customer specific body length with TOPEC. Body lengths shown based on evenly distributed load at max axle load.

9) Unladen height at centre of driven axle(s).

10) Laden height at centre of driven axle(s).

11) TK = turning circle between kerbs.

12) TW = turning circle between walls.

13) Unladen height at centre of front axle(s).

14) Laden height at centre of front axle(s).

15) TB is overall width at rear. (At centre of front axle 255).

Depending on the vehicle configuration a specific option may not be possible. The availability and specification of this vehicle may differ per country. For further information please contact the DAF organisation. Pictures and technical illustrations are not binding in detail and can differ from the standard specification. Subject to modification without prior notice.