

SUPERIOR DNA

from **MASSEY FERGUSON**



THE FUTURE OF MATERIALS HANDLING

MF 9000 Series telescopic handlers from **MASSEY FERGUSON**



MASSEY FERGUSON

Built to the highest standards. Yours.

This is the new range of telescopic handlers from Massey Ferguson. Each machine has been built specifically with the customer in mind. The MF 9000 is a winning combination of superior design, first-rate engineering and the precise needs of the individual customer. It's a result of intense research and development with serious enhancements to create the ultimate agricultural tool, built specifically for your sector.

Model	Max. lift height	Max. lift capacity	Engine power (Hp/kW)	Transmission type
MF 9205	5.2 m	2,200 kg	75 (55.9)	Hydrostatic
MF 9306	6.0 m	3000 kg	100 (74.5)	
MF 9407	7.0 m	3,500 kg	100 (74.5)	
MF 9407S	7.0 m	3,500 kg	130 (97)	





Mean machines

Every model in the new telehandler lineup is aggressive when you need it most, with engine horsepower up to 130 hp, each one has the power and endurance to tackle the toughest jobs. The MF 9000 Series is a serious piece of kit that will prove to be invaluable around the farm. Speed, agility and strength are just some of the key features that make this the ideal multipurpose workmate around livestock and mixed farms.

The range starts with the MF 9205 compact telehandler. If you are looking for a smaller, more compact machine that can still tackle the toughest jobs then the MF 9205 is the ideal choice. Its compact design, low cab height and excellent manoeuvrability ensure unsurpassed performance in tight areas such as narrow barns and poultry buildings. Don't be deceived by its size, the MF 9205 boasts some of the same great features as its counterparts, with the added benefit of being a more condensed build. Features include:

- A boom float to follow uneven surfaces
- Power and precision from the hydrostatic transmission
- Spacious cab and comfortable operator area with fully proportional joystick for smooth operation
- Excellent manoeuvrability ensuring complete productivity

Performance perfect

Handling jobs effortlessly and efficiently, the MF 9000 Series provides you with the optimum accessibility and maneuverability that you require. This range also gives you more lift height, a longer reach and the ability to lift heavier payloads. With the right attachment, the MF 9000 Series can achieve paramount performance in a wide variety of applications around the farm.

Excelling in both loader operations where plenty of hydraulic flow is provided through to 40 Kph road transport applications, where power and stability is essential, each telehandler boasts impressive capabilities, whether you're moving bales or shifting feed. This new range also offers essential and unbeatable visibility thanks to the new cab design that allows the operator to work unhindered and in complete safety.



Key features and benefits on models MF 9306, MF 9407 and MF 9407 S:

1 Cab and operator area

One of the most impressive features of all in this new range is the cab itself. The new, curved shape cab design and the low boom pivot point ensures unsurpassed visibility all around the machine, especially from the rear of the cab whilst working in tight and narrow spaces. An unobstructed view of front attachments ensures safe and precise loading and unloading, making it easier and safer to position bales or pallets at elevated working heights.

The superior operator environment consists of a spacious cab interior with excellent all-round operator visibility and a reduced noise level. The cab layout is extremely ergonomic; controls and instruments are easy to use and have been designed to help make applications easier to manage. The new multi-function joystick is close to hand, ensuring efficiency, quick and easy operation and total productivity. A digital display screen located on the dashboard shows valuable information such as engine or job hours, vehicle or engine speed, boom angle, speed management and auxiliary hydraulics.

2 Engine

Each of these models has a powerful Perkins 1104D engine, providing plenty

of torque in applications that demand more traction and force. The larger and improved design of the engine cooling system ensures continuously high performance in demanding and confined operations. The engine is now mounted length ways, not only does this ensure space for the boom to sit without impeding visibility when in the cab, but access to the engine area for servicing and maintenance is easy and straightforward.

3 Transmission

The four speed hydrostatic gearbox offers simplicity and smoothness of operation as well as high-performance output and capability. It has speed capabilities of up to 40 kph with two mechanical gears comprising of two speeds. It also has an easy-to-set creeper function for operations that demand low speed at higher engine revs. The increased towing capacity ensures heavier loads can be transported with ease.

4 Intelligent hydraulics

A powerful, reliable and consistent hydraulic system is paramount to the everyday productivity of a telehandler. A load sensing pump on all models supplies a class-leading 190 litres of oil per minute (optional), offering outstanding capabilities and performance, even at low

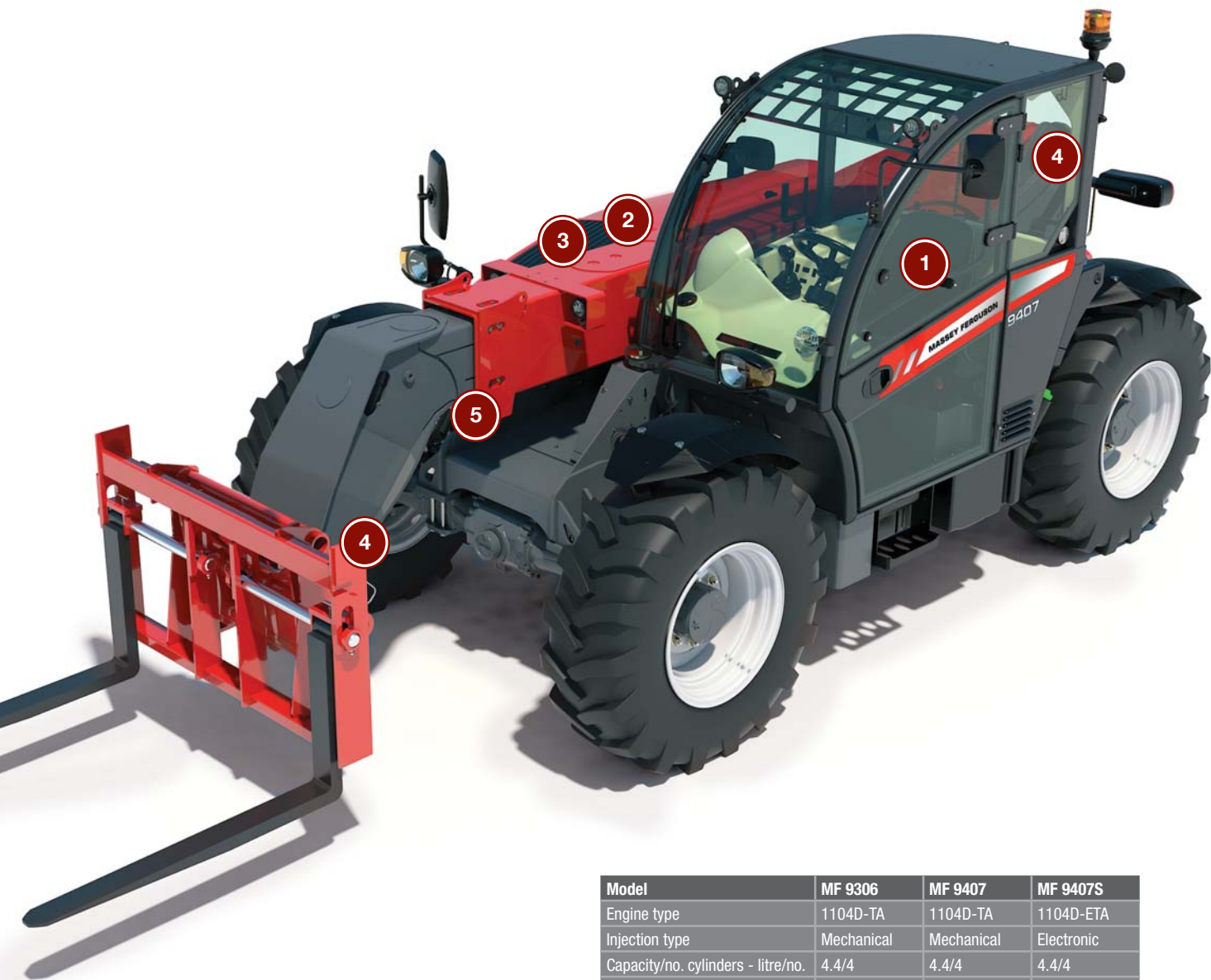
engine speeds. Therefore, you can work at significantly lower speeds, consume less fuel and can count on remarkably shorter working cycles. The load sensing pump only supplies oil when hydraulic power is required. This prevents unnecessary oil heating and power loss. If required, the full oil volume is available immediately.

Integrated, pressure-release quick couplers are conveniently mounted on the boom head for fast, efficient and easy coupling and uncoupling of implements.

5 Boom and chassis design

The new, wider chassis with a shorter overall length ensures stability excellent manoeuvrability when you need it most, as well as reassuring durability in the heaviest agricultural operations. A lower boom pivot allows unobstructed visibility around the entire machine for safer, more productive operations.

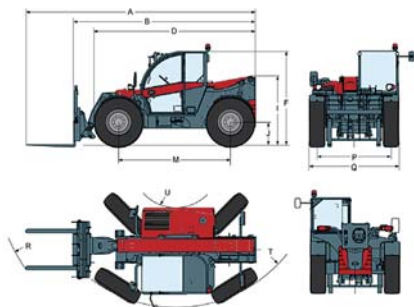
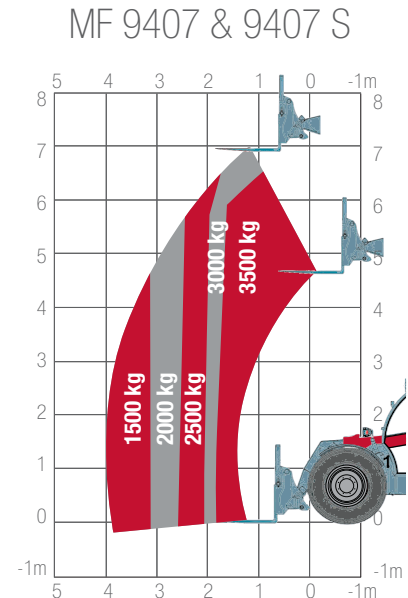
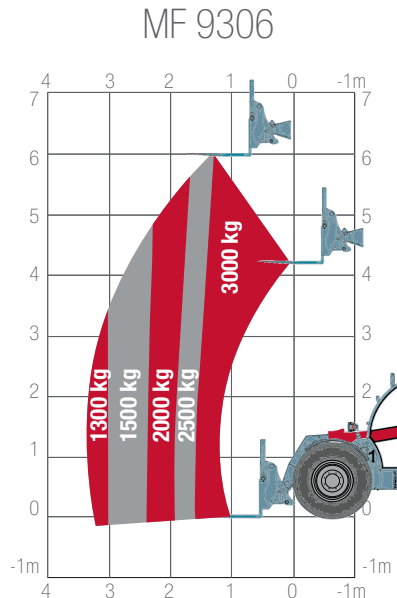
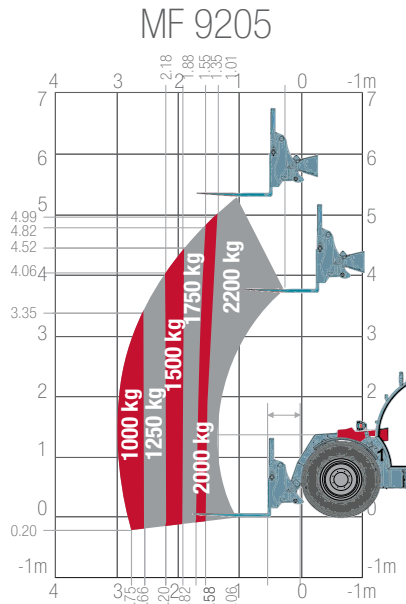
A new, optional boom float switch allows the operator to follow uneven surfaces in comfort, especially useful when cleaning livestock sheds and transporting loads. Optional boom suspension is also available, which greatly increases operator comfort, for example, when towing a large trailer of straw at 40 kph during road transportation.



Model	MF 9306	MF 9407	MF 9407S
Engine type	1104D-TA	1104D-TA	1104D-ETA
Injection type	Mechanical	Mechanical	Electronic
Capacity/no. cylinders - litre/no.	4.4/4	4.4/4	4.4/4
Rated power	100	100	130
Rated engine speed	2200	2200	2200
Max torque	410	410	510

Lift capacity

These load capacity illustrations clearly show that each model offers outstanding lift performance in its respective class.



	MF 9205	MF 9306	MF 9407
A	5330	5874	6074
B	4145	4669	4869
D	4000	4145	4145
F	1985	2374	2374
I	1553	1752	1752
M	2300	2870	2870

	MF 9205	MF 9306	MF 9407
P	1485	1895	1895
Q	1840	2300	2300
R	4280	4805	4970
T	3170	3714	3714
U	1500	1092	1092

Specifications

Every effort has been made to ensure that the information contained in this publication is as accurate and current as possible. However, inaccuracies, errors or omissions may occur and details of the specifications may be changed at any time without notice. Therefore, all specifications should be confirmed with your Massey Ferguson Dealer or Distributor prior to any purchase.

Loader performance (norm EN 1459: 1998 Annex B)		MF 9205	MF 9306	MF 9407	MF 9407S
Max. lift capacity					
- at ground level	kg	2,200	3,000	3,500	3,500
- at full lift height	kg	2,200	3,000	3,500	3,500
- at full reach	kg	1,000	1,300	1,500	1,500
Max. lift height	metres	5.2	6.0	7.0	7.0
Forward reach - boom extended	metres	3.0	3.4	4.0	4.0
Engine					
Type		V3800-DI Turbo	1104D-TA	1104D-TA	1104D-ETA
Capacity/no. cylinders	litre/no.	3.8/4	4.4/4	4.4/4	4.4/4
ISO hp (kW) @ 2200 rev/min	hp (kW)	75 (56)	100 (74.5)	100 (74.5)	130 (97)
Max. torque	⊕ Nm	274	410	410	510
Transmission					
Type		Hydrostatic, 2 speed ranges in forward and reverse	Hydrostatic, 2 speed ranges in forward and reverse, electronically controlled with fast and slow transmission modes		
Max. road speed	km/h	25	30 or 40	30 or 40	40
Tyres					
Standard		325/70 R 18	400/80R24	400/80R24	400/80R24
Optional		-	500/70R24	500/70R24	500/70R24
Steering					
Hydrostatic		●	●	●	●
Front wheel, 4-wheel and crab-steer		●	●	●	●
Hydraulic system					
Boom - gear pump capacity	litre/min	85	100	100	-
Max. operating pressure	bar	265			-
Boom CCLS Pump		-	○	○	●
Capacity	litre/min	-	190		
Weights and capacities					
Weight, without implement	kg	4695	6110	7130	7130
Fuel tank capacity	litre	91	138	138	138

● = Standard

○ = Optional

⊕ = ISO TR14396

- = Not available

SUPERIOR DNA

from **MASSEY FERGUSON**

For more information and the location of your nearest Massey Ferguson dealership, please visit our website, www.masseyferguson.com. Look out for the MF Telehandler brochure in Summer 2011.

Every effort has been made to ensure that the information contained in this publication is as accurate and current as possible. However, inaccuracies, errors or omissions may occur and details of the specifications may be changed at any time without notice. Therefore, all specifications should be confirmed with your Massey Ferguson Dealer or Distributor prior to any purchase.



MASSEY FERGUSON is a worldwide brand of AGCO.
© AGCO Limited. 2011 | A-English/14999/0211/5m



MASSEY FERGUSON