

KOMATSU

PC210-11 **PC210LC-11**

EU Stage IV Engine

HYDRAULIC EXCAVATOR

PRELIMINARY



PC210

ENGINE POWER

123 kW / 165 HP @ 2.000 rpm

OPERATING WEIGHT

22.120 - 23.580 kg

BUCKET CAPACITY

max. 1,68 m³

Walk-Around

INCREASED FUEL EFFICIENCY AND ENVIRONMENTAL PERFORMANCE

Up to 6% less fuel consumption with new engine and control systems.

Powerful and Environmentally Friendly

- NEW** • EU Stage IV engine
- NEW** • Adjustable idle shutdown
- Komatsu fuel-saving technology
- NEW** • Engine fan clutch
- Reduced wastage

First-Class Comfort

- Fully air-suspended operator station
- NEW** • Low noise design: class-leading 67 dB(A)
- NEW** • Widescreen monitor with evolutionary interface
- Low vibration levels
- Improved operator convenience



images may display optional equipment or specifications not available in your area.

PC210/LC-11

Maximized Efficiency

- Built-in versatility and superior productivity
- NEW** • Enhanced engine management
- NEW** • Lower hydraulic pressure loss

Safety First

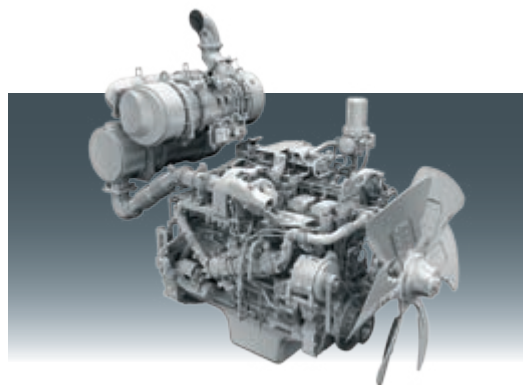
- Komatsu SpaceCab™ (FOPS optional)
- NEW** • Improved monitoring system
- NEW** • Neutral position detection system
- Safe access, easy maintenance
- Falling Object Protection System (FOPS) optional

Quality You Can Rely On

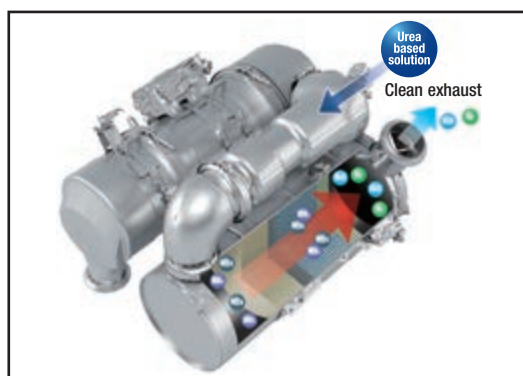
- Komatsu-quality components
- Extensive dealer support network
- Reliable and efficient
- Rugged design

KOMTRAX™

- Komatsu Wireless Monitoring System
- NEW** • 3G mobile communications
- Integrated communication antenna
- NEW** • Increased operational data and fuel savings



New, low consumption Komatsu SAA6D107E-3 engine.



New heavy-duty aftertreatment system combines the Komatsu Diesel Particulate Filter (KDPF) and Selective Catalytic Reduction (SCR) to fully comply with EU Stage IV emissions.



Fully air-suspended operator station ensures maximum operator comfort.



Improved monitoring system with rear-view camera image on the default screen. Eco gauge, eco guidance and fuel consumption gauge help to further reduce consumption.



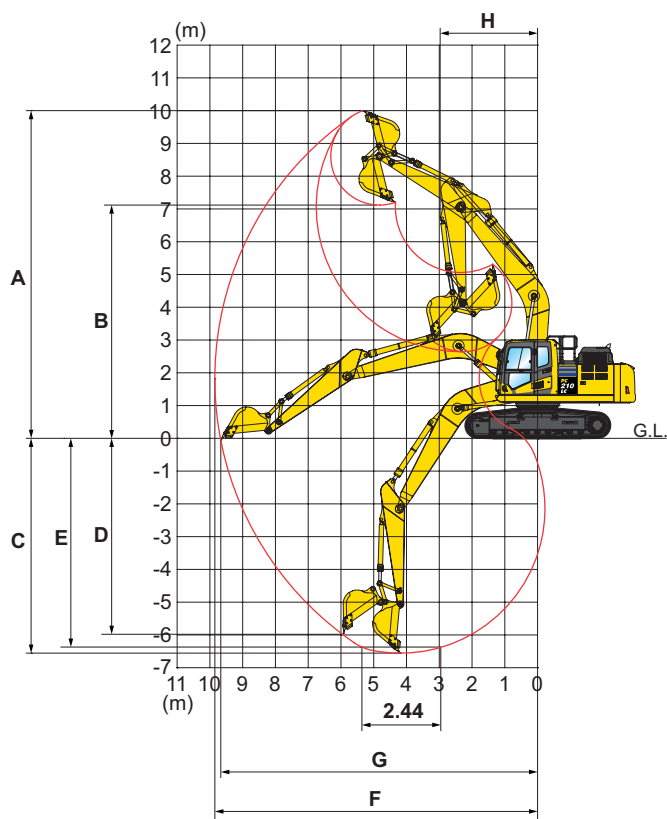
Complimentary maintenance program for customers



ENGINE

Model	Komatsu SAA6D107E-3
Type	Common rail direct injection, water-cooled, emissionised, turbocharged, after-cooled diesel
Engine power	
at rated engine speed	2.000 rpm
ISO 14396	123 kW/165 HP
ISO 9249 (net engine power)	118 kW/158 HP
No. of cylinders	6
Bore × stroke	107 × 124 mm
Displacement	6,69 l

WORKING RANGE



HYDRAULIC SYSTEM

Type	HydrauMind. Closed-centre system with load sensing and pressure compensation valves
Additional circuits	2 additional circuits with proportional control can be installed
Main pump	2 variable displacement piston pumps supplying boom, arm, bucket, swing and travel circuits
Maximum pump flow	475 l/min
Relief valve settings	
Implement	380 kg/cm ²
Travel	380 kg/cm ²
Swing	295 kg/cm ²
Pilot circuit	33 kg/cm ²

UNDERCARRIAGE

Construction	X-frame centre section with box section track frames
Track assembly	
Type	Fully sealed
Shoes (each side)	45 (PC210), 49 (PC210LC)
Tension	Combined spring and hydraulic unit
Rollers	
Track rollers (each side)	9
Carrier rollers (each side)	2

ENVIRONMENT

Engine emissions	Fully complies with EU Stage IV exhaust emission regulations
Noise levels	
LwA external	100 dB(A) (2000/14/EC Stage II)
LpA operator ear	67 dB(A) (ISO 6396 dynamic test)
Vibration levels (EN 12096:1997)*	
Hand/arm	≤ 2,5 m/s ² (uncertainty K = 0,49 m/s ²)
Body	≤ 0,5 m/s ² (uncertainty K = 0,24 m/s ²)

* For the purpose of risk assessment under directive 2002/44/EC, please refer to ISO/TR 25398:2006.

ARM LENGTH

	2,4 m	2,9 m
A Max. digging height	9.800 mm	10.000 mm
B Max. dumping height	6.890 mm	7.110 mm
C Max. digging depth	6.095 mm	6.620 mm
D Max. vertical wall digging depth	5.430 mm	5.980 mm
E Max. digging depth of cut for 2,44 m level	5.780 mm	6.370 mm
F Max. digging reach	9.380 mm	9.875 mm
G Max. digging reach at ground level	9.190 mm	9.700 mm
H Min. swing radius	3.090 mm	3.040 mm