

FENDT

Fendt Rogator 300





The trailed self-propelled sprayer.

In the plant protection sector, there's one name that gives you precise boom control, easy handling and optimal, reliable application: Rogator. The many years of experience and key technologies in the production of the globally successful self-propelled sprayer Rogator 600 makes the Rogator 300 what it is today: the first trailed self-propelled sprayer.



	RG 333	RG 344	RG 355	RG 366
Maximum capacity	3500 litres	4670 litres	5775 litres	6930 litres
Boom widths	24 - 27 - 28 - 30 m	24 - 27 - 28 - 30 m	24 - 27 - 28 - 30 m	24 - 27 - 28 - 30 m

Our core focus:
Efficient plant protection for healthy crops.

The trailed Fendt Rogator 300 meet all the requirements that customers expect of a cutting-edge, trailed plant protection implement. Flexible trailing and drive, powerful, and easy to handle. With SectionControl, VariableRateControl and VarioDoc Pro significantly increase efficiency.

Expertise from more than 50 years of field sprayer production has been pooled at the Dutch AGCO site in Grubbenvorst. The Rogator 600 self-propelled sprayer is testament to our knowledge and expertise in the application equipment sector, and is much loved by customers worldwide. The innovations of the Rogator 600 also feature in the trailed Rogator 300:

- perfect boom position and ground following
- low centre of gravity
- ISOBUS machine operation with SectionControl and VariableRateControl according to the AEF Standard
- 3300/4400/5500/6600 l tank capacity and up to 900 l clean water
- induction hopper with OptiFlow control centre
- Optisteer steering axle fitted at the rear with up to 2.05 m higher tyres and 30° steering angle
- smooth undercarriage with 85 cm ground clearance for maximum plant protection
- drive via PTO or hydraulics
- rotor pump with 785 l/min pump capacity
- single beam frame for maximum stability and manoeuvrability



We have evaluated thousands of customer surveys, performed extensive practical tests, and have combined everything in the Rogator 300 that our Fendt machine customers expect: perfect boom position, user-friendliness and the best equipment. Simply a trailed plant protection implement which redefines the state of the art.

Plant protection breeds confidence.
Rely on Fendt.

FENDT ROGATOR 300: CHASSIS

The Fendt Rogator is always the right choice.

Flexible drawbar

The universal drawbar allows the Rogator 300 to be used with clevis-type coupling and hitch-type couplings, with all drawbar eyes available on the market, or with ball couplings. You can switch between clevis-type coupling and hitch-type coupling at any time. The tractor's load-sensing hydraulics are a fuel-efficient driver of the Rogator 300, with a PTO drive also available on request.

Perfect trailing with Optisteer steering axle

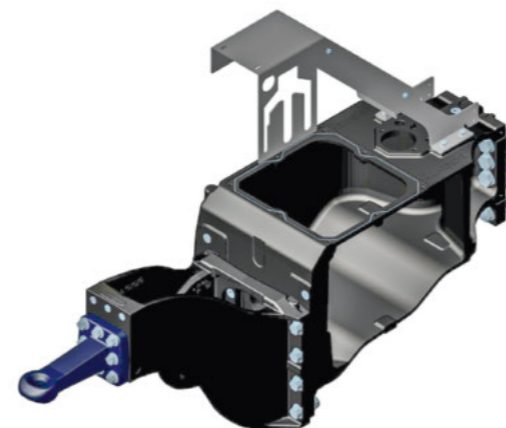
30° steering angle thanks to the Optisteer steering axle allow a turning radius of just 3.8 m which is always perfectly adjusted to match the tractor's rear axle. The Fendt Rogator is therefore highly agile and protects the uncut crop even when turning. The high-performance hydraulics or air pressure brake ensures safety on the roads, regardless of whether the tank is full or empty. Wheel tracks from 1.5 m to 2.25 m are available on request.

Sturdy frame

The unbendable backbone of the machine, developed from the self-propelled frame, forms the basis for precise application and therefore effective use of your spray liquid. The boom is guided in front of the rear axle, so that the chassis only transfers minimal movements to the boom. The Rogator 300 always work with the utmost precision.

Smart tank

The difference between the Rogator 333 and 344 lies solely in the larger tank. The Rogator 355 and 366 also share a frame and differ solely in regard to the tank. The special tank designs guarantee on the one hand a very low centre of gravity, and therefore stable, safe and smooth handling, but also make it possible to work right down to the last litre, leaving no liquid behind.

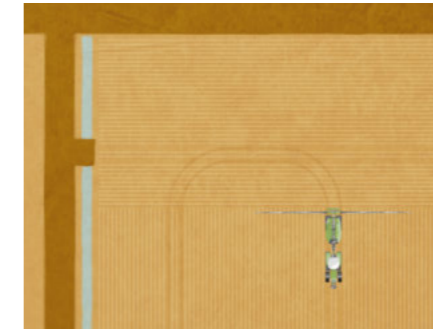


Easily changeable drawbar for flexible operation, regardless of whether you use clevis-type or hitch-type coupling. A prominent feature of the Rogator 300 is its narrow silhouette.

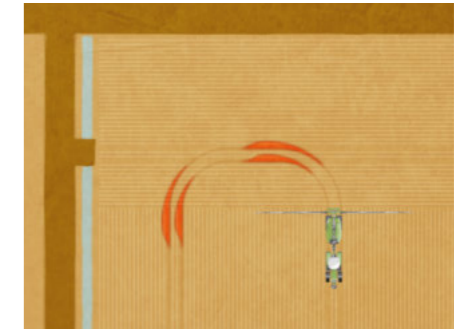
Turning radius of only 3.8 m thanks to the 30° steering angle, controlled by the machine's job computer, meaning that even narrow, tight entrances are no problem.



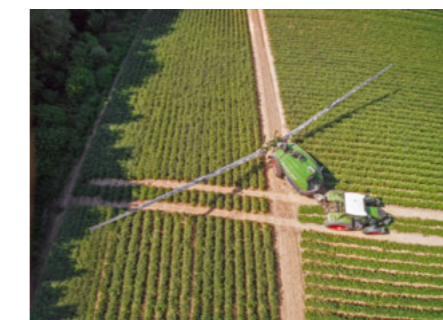
The intelligent Optisteer steering axle detects the radius of the tractor's rear axle and speed, and knows just when it must be steered and by how much to follow the track of the rear axle. The combination is therefore directionally stable and crop damage is minimised.



Without the Optisteer steering system, there would be divergence from the tramlines, as the sprayer will not keep to the track.



The high ground clearance of up to 85 cm, and the smooth undercarriage with no sharp edges guarantee minimal damage to plants.



Total directional stability ensures that damage and reductions to yields are kept to an absolute minimum.

FENDT ROGATOR 300: BOOM

Full control, even on difficult terrain.

Now even lighter

The Rogator 300 comes as standard with a rigid lightweight aluminium boom, which is available in widths of 24 to 30 metres. This is attached to the machine via a central frame, which is not only robust, but also provides an exceptional level of stability when spraying at any speed. The nozzle holders are fitted into a frame profile to protect them. The wide holder profile ensures easy access and also allows the use of double flat fan nozzles in any position. In view of the very high performance values and potential of this machine, only this boom can meet the heavy demands in practice.

The pivot holds the key

The parallel linkage and articulation of the lift arm fitted in front of the rear axle keep the centre frame close to the rear axle, and transfer very little chassis movement to the boom.

Ideal positioning at all times

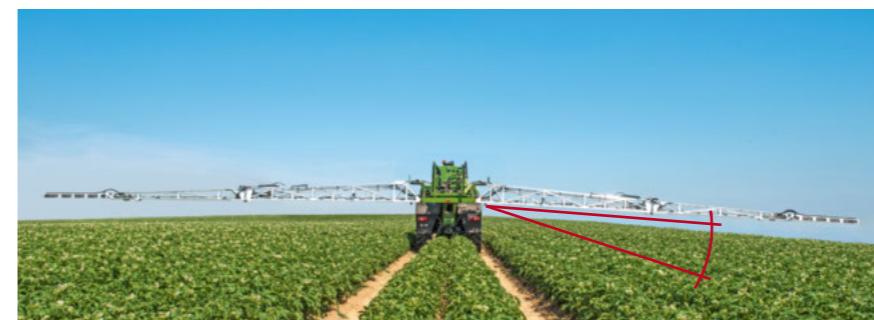
Horizontal and vertical boom movement, which can be attributed to the terrain or to the acceleration and slowing of the vehicle, are almost completely eliminated by the special Rogator damper cylinder. At the same time, the system reduces the main frame load to a minimum. Due to the low yaw, there is no overlapping and no gaps which can often be caused by a swinging (forward/back) boom.

Perfect height thanks to OptiSonic

Thanks to the OptiSonic spray height control system, the right, middle and left sides of the boom automatically and separately follow the ground. Ultrasonic sensors keep the spray height constant at all times. The boom tilt is adjusted using an inclinometer. The 3 to 5 boom sensors have been designed so that measurements do not need to be taken in daylight. The boom is of course protected against damage by an impact guard.

Transport width is only 2.55 m, with the boom transport position optimised to match the machine contours. Excellent ride comfort and very low risk of machine damage due to branches or in narrow spaces.

The central boom pivot ensures that all diffusers are ideally positioned and remain stable above the uncut crop.



Boom angling at one side to attain the ideal application height on steeply sloping terrain.



The ground contour or crop can be used as a reference for height control to precisely adjust the boom to suit your crop. Hybrid control is also possible.

FENDT ROGATOR 300: BOOM

Fendt Rogator: The ideal basis for flexible application.

Robust tanks

The spray liquid tanks on the Rogator are made from HDPE (high-density polyethylene). The tank's shape is a perfect fit for the machine profile, guarantees the optimal weight distribution, and can be completely drained as well as being easy to clean. Thanks to the smooth, non-stick surface, few residues are left behind and can be quickly and safely removed using the rotating internal cleaning nozzles. There's no leftovers, and your spray liquid is used effectively right down to the last drop.

Compact folded boom

When collapsed it rests in grooves on the side of the spray liquid tank. The machine is therefore only 2.55 metres wide, to optimise transport and to prevent damage. The Fendt boom has one of the most stable designs on the market. Especially, when it comes to yaw (movement around the vertical axis of the machine), the Rogator 300 has it all under control: Regardless of the road speed and ground conditions, the pivot is able to almost completely eliminate horizontal swinging.

Single nozzle switch

Nozzle adapters are integrated into the boom profile, and are fully protected against damage. As you would expect, there is a single nozzle switch which helps you to use your pesticides as efficiently as possible.

State-of-the-art valves

To convey the spray liquid from the induction hopper through the tank to the diffusers, we use state-of-the-art valve assemblies, so that the spray system can react to meet any requirement. To enhance user-friendliness, there's an option to actuate all switching valves electrically. The 1" pressure circulation line guarantees high liquid speeds and therefore no deposits. Thanks to the high-precision flow control, the spray system can work with a wide variety of application quantities. With 8 feeding points, even very large application quantities can be safely dosed. The delivery pipes which ensure an even flow, and the few connection points, make the system extremely reliable.

The nozzle adapters are seamlessly integrated into the boom, and so are protected against damage.



FENDT ROGATOR 300: PUMP AND OPTIFLOW CONTROL CENTRE

Fendt Rogator: Synonymous with convenient plant protection.

High-performance pump

A rotary pump with optionally self-priming unit and 785 l/min pump capacity, driven by the tractor's load-sensing hydraulics or the on-board load-sensing hydraulics, supplies all liquid-distributing parts of the system. The flow rate of the rotary pump prevents pulsation in the lines and ensures maximum application accuracy. There are no additional hoses or relief valve which are difficult to clean on membrane pumps. Application quantities are controlled via the pump speed – quickly and efficiently – and the pump only carries the required quantity of liquid for the spraying work, plus the specified quantity for the agitator. This helps the Rogator 300 to respond accurately to changing application quantities and different speeds.

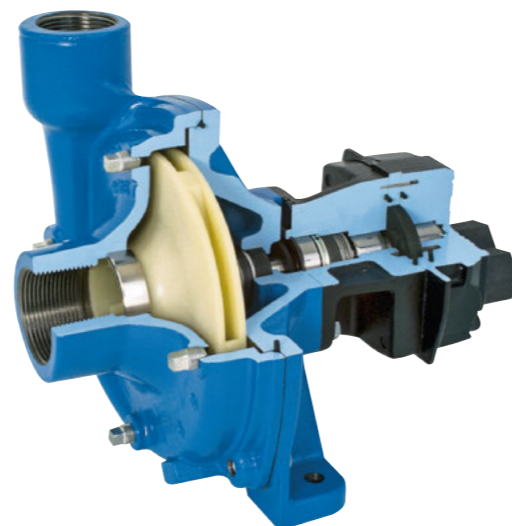
Reliability with no strings attached

Our low-maintenance pump guarantees excellent reliability and low operating costs. The 3" intake pipes mean that it can be filled quickly and effortlessly.

Ground-breaking OptiFlow control centre

The straightforward, logically-designed OptiFlow control centre with easily readable monitor controls all valve functions, and makes it easy for the operator to fill the sprayer, even when wearing gloves. An electronically fill level indicator allows the automatic filling mode to be monitored on the filling station or in the cab.

The 785 l/min rotor pump is hydraulically driven, but works without pulsations and reacts quickly. For perfect plant protection.



The OptiFlow control centre for convenient control of all functions during filling.



Electric control valves provide even more comfort and safety, such as protection against overfilling.



Convenient, intuitive and safe operation, even with protective clothing.



The maximum pump output of 785 l/min also means that liquid fertiliser application becomes child's play.

FENDT ROGATOR 300: FILLING

Safe and easy filling for very short downtimes.

Practical induction hopper

The 60 l capacity induction hopper has an output of up to 200 l/min. Even large quantities of crystalline products can be quickly and easily dissolved at a rate of up to 33 kg/min. The operator fills the induction hopper from a comfortable height and can fold it in and out easily using the gas pressure springs. All products are properly rinsed using the cleaning nozzle.

OptiFlow control centre

All valve functions required for filling and stirring can be operated from the OptiFlow control centre on the induction hopper, as well as from the cab. The optional automatic filling system stops exactly at the number of litres set by the operator – even if there are two figures, e.g. water and then pesticide. The system always guarantees a homogenous spray liquid mixture in the tank and safely prevents overfilling.

Operator convenience

The large and easy to open panels of the Rogator 300 consist of the same HDPE material as the spray liquid tanks. Extremely smooth, glass-like surfaces effectively prevent sticking and are easy to clean. Cleverly-designed and sealed stowage compartments allow personal protective equipment and funnels to be carried safely. These do not come into contact with pesticides or spray liquid, and therefore do not need to be cleaned either. The hydraulic agitator's mixing power can be adjusted from the terminal. It switches off automatically when the tank contents fall below 200 l, therefore preventing turbulence. Every last drop of your product will be put to use.

Perfectly concentrated right from the start

The permanent circulation through the 1" spray line feeds the solution straight to the diffuser as soon as the rotor pump is switched on, even if the diffusers are closed. Apply the right quantity and concentration of liquid from the very first metre. To clean the diffusers, briefly switch the intake end of the pump over to the clean water tank, and briefly switch on the diffusers. This is how you reliably and effectively prevent deposits in the diffuser pipe and diffusers. Easy, quick, reliable – from the convenience of the operator's seat.

The high-performance induction hopper for quick dosing and short downtimes.



Our sealed stowage compartments for your personal protective equipment. Your equipment always stays dry and clean, and does not have to be stored in the tractor cab.



Downtime is reduced to a minimum thanks to the clutter-free induction side. The Fendt Rogator is clutter-free, practical and very user-friendly.

FENDT ROGATOR 300: TECHNOLOGY

Controls made easy for you.

100% ISOBUS

Plant protection means precision, and requires a simple, logical and standardised operating concept on all control terminals. The Rogator 300 is fully ISOBUS compatible in accordance with DIN ISO 11783. All functions such as TC-BAS, TC-SC and TC-GEO can be controlled via an integrated tractor terminal or an external ISOBUS terminal, regardless of the manufacturer. Our optional OptiControl joystick offers you exceptional comfort and convenience, and is specially optimised for use with our sprayer implements. All Fendt Rogators support the ISOBUS UT function (Universal Terminal). This means that the user interface can be displayed on any ISOBUS terminal. Any task controller that supports section engagement can control the Fendt Rogator series.

Documentation made easy

The TC-BAS (TaskController Basic) ISOBUS standard takes over documentation of cumulative values, which provide information on work performed. The implement supplies values such as total application quantity, worked area and much more. The data exchange between field database and TaskController Basic (TC-BAS) takes place using the ISO-XML data format. Jobs can therefore be conveniently imported into the task controller on the terminal, and then the completed documentation can be exported again.

Section engagement for increased efficiency

The TC-SC (TaskController SectionControl) ISOBUS standard takes over the automatic engagement of sections depending on the GPS position and the required degree of overlapping. SectionControl can also produce higher yields whilst saving 5 to 10% on spray liquid costs, TC-GEO (TaskController Geobased (variable) provides you with the option of working with location-specific application maps, also known as VariableRateControl (VRC), and of recording the applied quantities in your field database. All key functions such as switch to clean water, internal cleaning or switch off agitator can be controlled directly from the cab.

Optimal integration into the existing ISOBUS systems.



The Fendt Varioterminal gives you a perfect overview of your Rogator 300 with all relevant machine functions, SectionControl including coverage map, as well as other configurable functions.



OptiControl joystick for even more operating comfort.



Each operator has his own demands of the machine controls. Thanks to the Aux-N protocol for individual joystick button assignment, your Rogator 300 controls can be quickly and easily adjusted to suit your individual needs.

FENDT ROGATOR 300: PRECISION FARMING

Smart solutions to ensure success.

The ultimate in precision

The automatic section engagement facility is absolutely essential for those who need 100% efficiency. Valuable liquids are not used twice on the same area, but there's also no overlapping or gaps. This applies to large areas as well as to smaller, winding run-outs. Simply couple the Rogator 300 and all parameters will be sent to the ISOBUS terminal fully automatically.

VariableRateControl (VRC)

VariableRateControl (VRC) shows its strength when it comes to precise dosing of liquids. For best effect, transfer the relevant application maps to the tractor before application using VarioDoc Pro. The exact application quantity is then sent to the Rogator 300 via the ISOBUS interface, and applied with great precision thanks to the VarioGuide steering system. VRC can be used to avoid returning to the yard with leftover liquid, and can assist when exact quantities of pesticides need to be purchased.

Headland management on field boundaries

If field boundaries are stored, there's no risk that application of liquid will start if the boom moves beyond the field boundary. You can also treat the run-out first, and leave the headland to the end, whilst always keeping your machines clean. It's actually the ideal way of treating specific target areas, even when run-out boundaries are unclear and when working at night.

Using the Varioterminal, you can clearly see the status of individual sections in 3 fields and of the Rogator 300, the map with the worked area, and the current status of VarioGuide.



With the help of your compatible field database, simply plan your liquid application in detail in the application map before starting work, and transfer it using the TC-GEO ISOBUS standard. All this is not magic, but is simply the most efficient way to work your land.



Liquids can be applied with precision using VariableRateControl (VRC).



There are huge potential savings, especially at the field boundaries and headlands. The automatic section engagement facility takes the strain off the operator, as he no longer has to worry about section engagement. Potential savings increase even further if there are no tramlines, e.g. during pre-emergence work or on grassland.

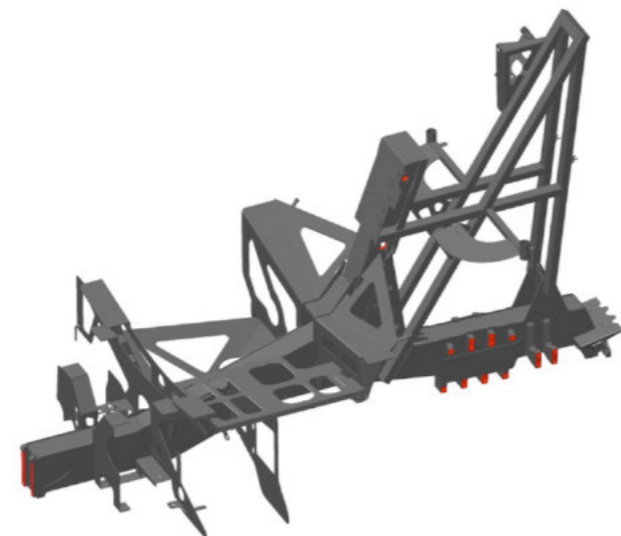
FENDT ROGATOR 300: AFTERSALES & SERVICES

Always ready to go,
because plant protection
is a matter of urgency.

Everything on board – everything under control!
All certified Fendt dealerships have a high-tech service vehicle, trusted and optimised tools, service literature, and FENDIAS, the computer-based analysis and diagnostics system. This allows field technicians to reliably pinpoint defects and quickly repair them.

Professional workshops and quality service
The foremen, service technicians and fitters at the certified Fendt agents are fully up-to-date with the latest technology. Equipped with the latest diagnostics systems, electronic parts catalogues and online ordering systems, you can get your Rogator back into the field in no time!

High-tech 3D design lays the foundation of a well-designed system and optimal servicing access right from the planning phase.



Our new high-tech production line for sprayer implements at the Fendt Hohenmölsen site.



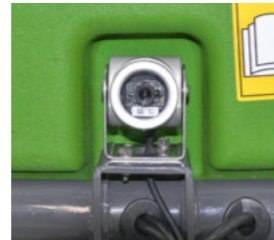
Thanks to the synergies and the well-established Fendt Service, wear parts and spare parts are readily available when needed.

FENDT ROGATOR ADDITIONAL EXTRAS.

Tailored to your individual needs.



■ GPS antennae with EGNOS accuracy



■ Reversing camera



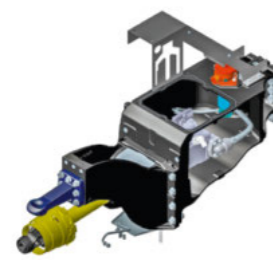
□ 8" display as a second terminal can be used for an even better overview.



□ The practical hose reel at the rear of the sprayer allows quick, straightforward cleaning.



■ LED headlights for an optimal view of the nozzle fans. 2 or 4 blue LED main lights are also available as an option. Headlights are fitted in front of the nozzle to protect against deposits.



■ Clevis-type coupling or ...



□ ... Hitch-type coupling. Even if a PTO drive is used, all options are available.

FENDT ROGATOR

Equipment variants and technical details.

		Rogator 333	Rogator 344	Rogator 355	Rogator 366
Main tank					
Nominal capacity	litres	3300	4400	5500	6600
Maximum capacity	litres	3500	4670	5775	6930
Material: High-density polyethylene (HDPE)		■	■	■	■
Clean water tank					
Capacity	litres	400	400 / 900	900	900
Material: High-density polyethylene (HDPE)		■	■	■	■
Filter					
Suction filter	mesh	12	12	12	12
Pressure filter	mesh	80	80	80	80
Plumbing					
Suction side	inch	2-3	2-3	2-3	2-3
Pressure side	inch	2	2	2	2
Material: High-density polyethylene (HDPE)		■	■	■	■
Suction valve					
Manual 5-way valve		■	■	■	■
Electric 5-way valve		□	□	□	□
Spray pump					
Pump type: Centrifugal pump		■	■	■	■
Maximum capacity at 2.5 bar	l/min	785	785	785	785
Maximum pressure	bar	8,5	8,5	8,5	8,5
Stainless steel centrifugal pump		□	□	□	□
Chemical inductor					
Volume	litres	60	60	60	60
Capacity for liquids	l/min	200	200	200	200
Capacity for solids	kg/min	33	33	33	33
Rinse system	bar	6	6	6	6
Cleaning gun**		□	□	□	□
Boom and spray equipment					
Plumbing	inch	1	1	1	1
Maximum number of sections including endrow nozzles	number	60	60	60	60
Boom widths	m	24 - 27 - 28 - 30	24 - 27 - 28 - 30	24 - 27 - 28 - 30	24 - 27 - 28 - 30
Material: Aluminium		■	■	■	■
Max. working height*	m	2,5	2,5	2,5	2,5
Min. working height*	m	0,5	0,5	0,5	0,5
Optisonic boom height control with 3 or 5 sensors		□	□	□	□
Independent boom geometry		■	■	■	■
Nozzle spacing	cm	50	50	50	50
Quin nozzle body	nozzles	5	5	5	5
Endrow nozzle EU		□	□	□	□
Endrow nozzle NL**		□	□	□	□
Reelerhose water**		□	□	□	□
Reeler hose air		□	□	□	□

* = Depending on tires, ** = Mandatory country-specific

FENDT ROGATOR 300

Equipment variants and technical details.



Standard and optional equipment
 Standard: ■
 Optional: □

		Rogator 333	Rogator 344	Rogator 355	Rogator 366
Drawbar and Coupler					
Drawbar height adjustable	positions	8	8	8	8
Towing eye	mm	40/50	40/50	-	-
Ball Coupler K80	mm	80	80	80	80
Hydraulic jack tractor operated		■	■	■	■
Hydraulic jack manual pump		□	□	□	□
Axle and Brakes					
Fixed axle		■	■	■	■
Steering axle		□	□	□	□
Steering angle*	degrees	30	30	30	30
Track width**	m	1,50 / 1,80 / 2,00 / 2,25	1,50 / 1,80 / 2,00 / 2,25	1,80 / 2,00 / 2,25	1,80 / 2,00 / 2,25
Pneumatic brakes		■	■	■	■
Pneumatic brakes with ALB		□	□	□	□
Hydraulic brakes		□	□	□	□
Tires and Fenders					
Diameter 320/105R46	m	1,84	1,84	1,84	1,84
Diameter 380/90R54	m	2,05	2,05	2,05	2,05
Diameter 480/80R50	m	2,05	2,05	2,05	2,05
Diameter 520/85R46	m	2,05	2,05	2,05	2,05
Fenders outside width	m	2,55	2,55	2,55	2,55
Hydraulic system					
Tractor with loadsensing hydraulic system	l/min	60	60	60	60
Tractor with opencenter hydraulic system	l/min	60	60	60	60
PTO driven with wide angle pto shaft	rpm	540	540	540	540
Controls					
ISOBUS		■	■	■	■
OptiControl lever		□	□	□	□
X25 ISOBUS touch screen terminal	inch	8	8	8	8
Reverse camera		□	□	□	□
Optiflow control panel		■	■	■	■
Weight					
Empty (depending machine options)	kg	4940	5140	5800	6000
Dimensions					
Length	m	7,7	7,7	8,2	8,2
Width*	m	2,55	2,55	2,55	2,55
Height*	m	3,9	3,9	3,9	3,9
Ground clearance*	cm	85	85	85	85

* = Depending on tires, ** = Mandatory country-specific

Safety and Service non-stop.

How good is spare part availability for Fendt sprayers?
 Thanks to the close network of dealers and manufacturers' warehouses, we can supply spare parts anywhere 24/7 during the season.

What is special about Fendt Service?
 For us, service means knowing and understanding your work in order to meet your demands for reliability and safety, and to act in your economic interest. We stand behind our products and have developed them for the highest demands and long-term operation. Our service is the partnership aspect for your work.

Where are the Fendt sprayers developed and assembled?
 The Fendt plant protection sprayers are developed in Grubbenvorst in the Netherlands. This site combines more than 50 years of expertise in the assembly of plant protection implements. Trailed and self-propelled Fendt plant protection sprayers are produced on a high-tech production line in Höhenmölsen, Saxony-Anhalt.

fendt.com
 Here you will find everything online, from brochures to technical specifications, reports about customers or the company, up to the Fendt event calendar.

Fendt Configurator
 With the Fendt Vehicle Configurator, you can choose from all the available equipment variations and put together the optimally equipped machine for your farm. The Fendt Configurator is available online at www.fendt.com, where you will find a quick link to it directly on the start page.

fendt.tv
 Fendt around the clock – our Fendt Media Library makes it possible. Our internet TV provides you with news and information about Fendt 24/7.

facebook.com/FendtGlobal
 Follow us on Facebook and find out what's new in the Fendt world. Come have a look!

instagram.com/fendt.global
 Follow us on Instagram and become a Fendt fan. Fascinating articles on Fendt are waiting for you there.



FENDT

Leaders drive Fendt!



www.fendt.com

AGCO GmbH – Fendt Marketing
87616 Marktobendorf, Germany

 **AGCO**
Your Agriculture Company

Fendt is a worldwide brand of AGCO.
All data regarding scope of delivery, appearance, performance, dimensions and weights, fuel consumption and running costs of vehicles reflect the latest information available at the time of print. These may change by the time of purchase. Your Fendt dealer will be happy to inform you about any changes. The vehicles shown do not feature country-specific equipment.