



PESCI

SE 1605

QUALITY

gru_truck_cranes

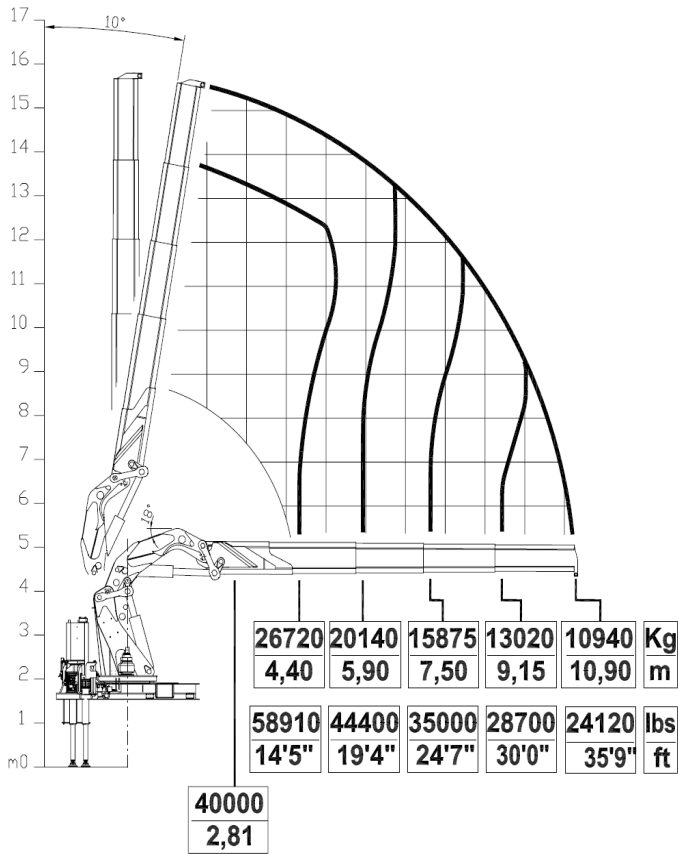


- > Scheda tecnica
- > Fiche technique
- > Technische daten

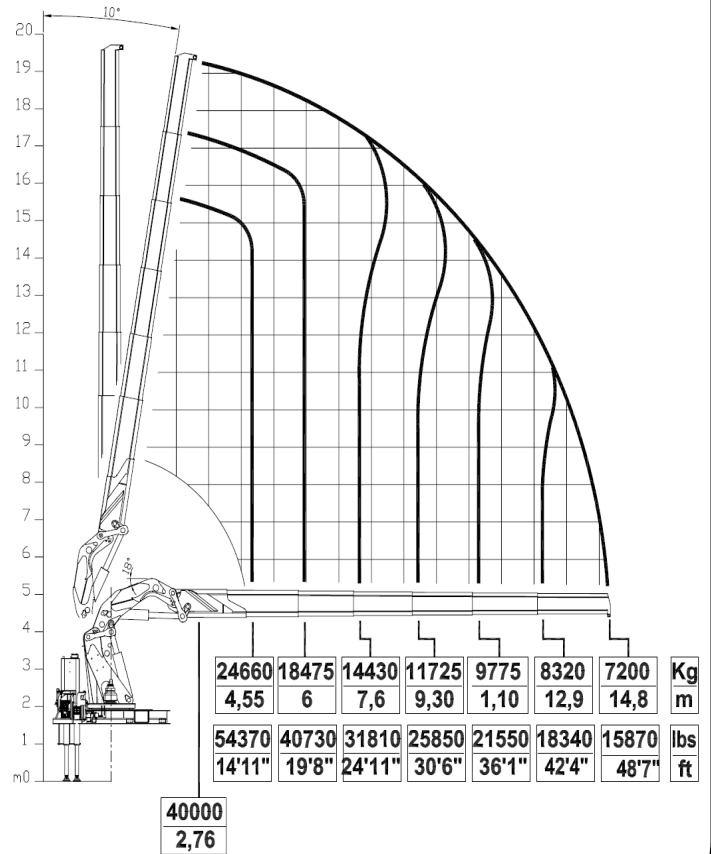
- > Technical features
- > Ficha tecnica
- > Folha de dados



/4



/6



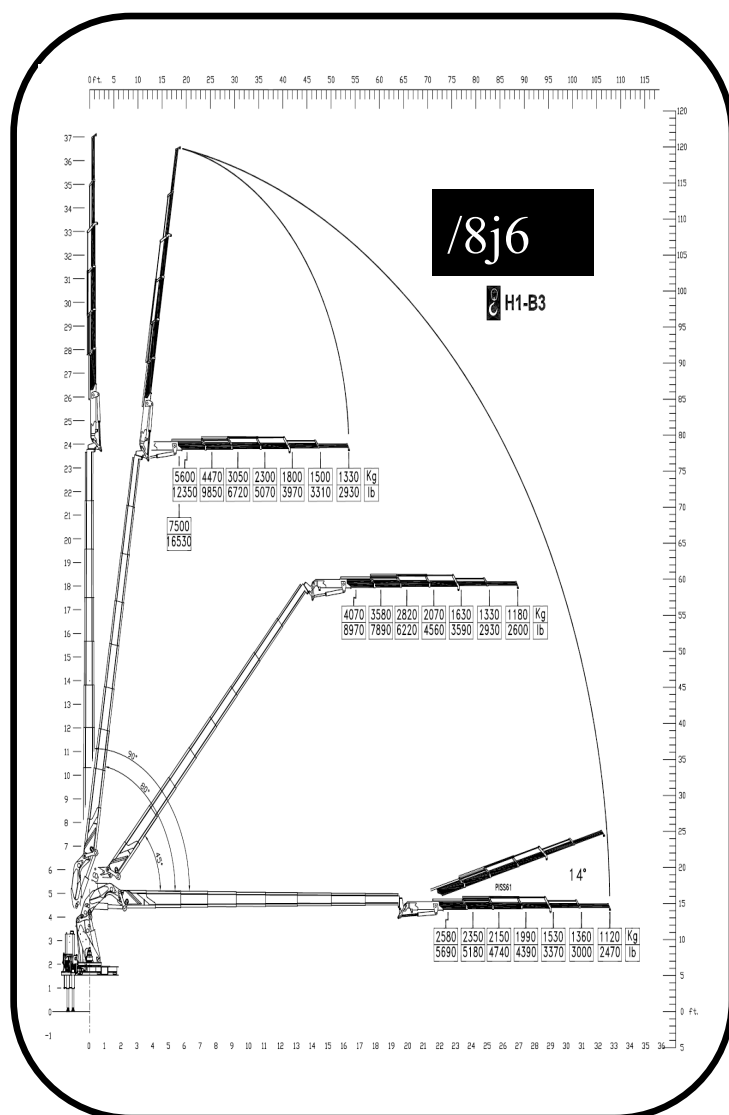
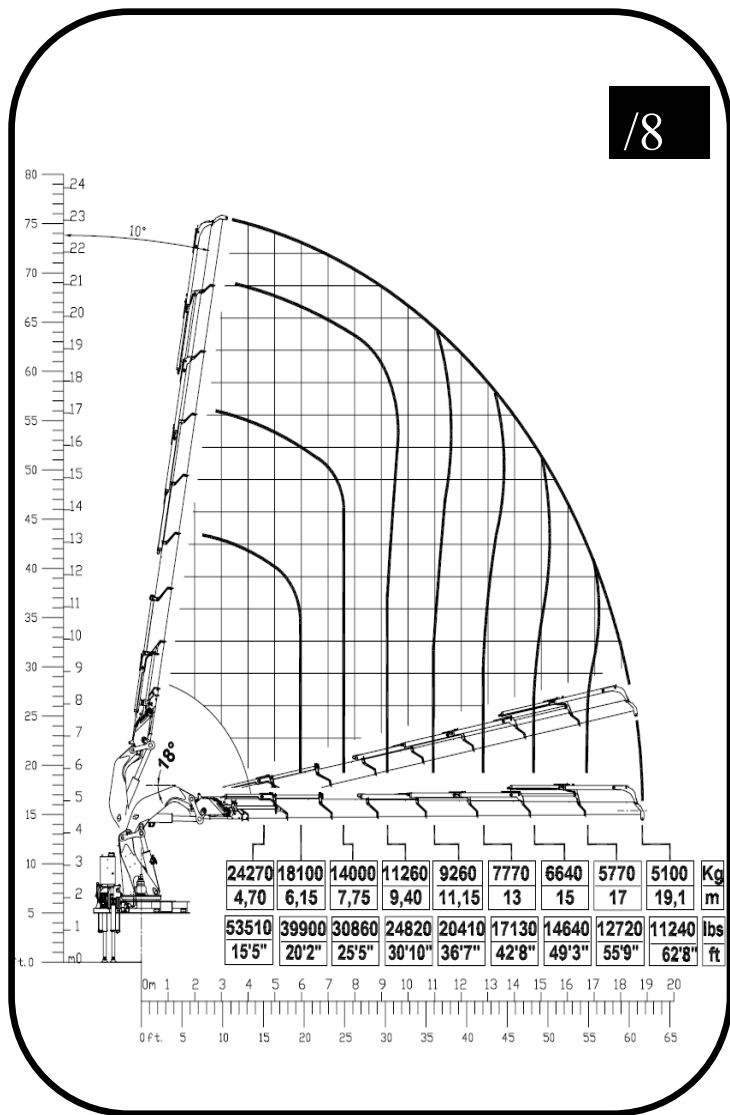
/4

/6

/4

/6

- MOMENTO MAX SOLLEVAMENTO - HUBMOMENT - COUPLE DE LEVAGE - MOMENTO - MOMENTO - MAX LIFTING MOMENT	1170 kN.m	1149 kN.m	- PORTATA POMPA OTTIMALE - FÖRDERMENGE DER PUMPE - PORTÉE DE LA POMPE - CAUDAL DE LA BOMBA - CAUDAL DA BOMBA - RECOMMENDED PUMP DELIVERY	100+50 l/m 26,3+13,1 gal/min	100+50 l/m 26,3+13,1 gal/min
- ANGOLO DI ROTAZIONE - SCHWENKBEREICH - ROTATION - GIRO - ROTAÇÃO - SLEWING ANGLE	∞	∞	- CAPACITÀ SERBATOIO OLIO - FASSUNGSVERMÖGEN DEL ÖLBEHALTERS - CAPACITÉ RÉSERVOIR HUILE - CAPACIDAD DEL DEPOSITO DE ACEITE I - CAPACIDAD DO DEPÓSITO DE OLEO - OIL TANK CAPACITY	650 l 170,9 gal	650 l 170,9 gal
- COPPIA MAX ROTAZIONE - MAX SCHWENKMOMENT - COUPLE MAXI. DE ROTATION - POTENCIA MÁXIMA DE GIRO - BINARIO MÁXIMO DE ROTAÇÃO - SLEWING TORQUE	152710 daN.m	152710 daN.m	- VEICOLO MIN. P.T.T. - LKW MIN. G.G.W. - CAMION MIN. P.T.A.C. - CAMION PESO MIN. P.T.T. - P.B. MIN CAMION - TRUCK MIN. G.V.W	32 t	32 t
- PRESSIONE MAX LAVORO - DRUCK - PRESSION - PRESSIÓN - PRESSÃO - MAX WORKING PRESSURE	345 bar	345 bar	- PESO GRU - GEWICHT - POIDS - PESO - PESO - CRANE WEIGHT	12750kg 28110 lbs	13425 kg 29600 lbs



/8

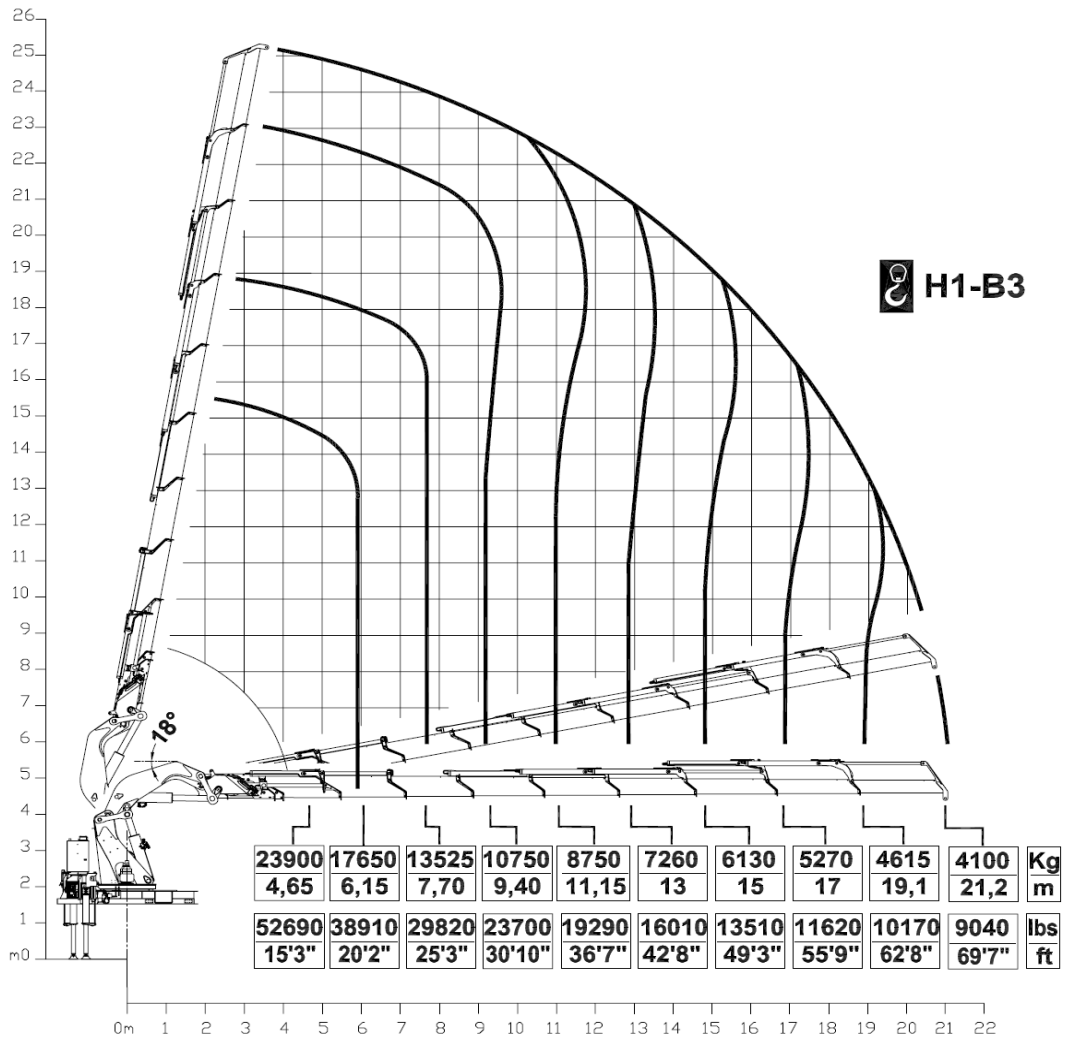
/8j6

/8

/8j6

<ul style="list-style-type: none"> - MOMENTO MAX SOLLEVAMENTO - HUBMOMENT - COUPLE DE LEVAGE - MOMENTO - MOMENTO - MAX LIFTING MOMENT 	1135 kN.m	1135 kN.m	<ul style="list-style-type: none"> - PORTATA POMPA OTTIMALE - FÖRDERMENGE DER PUMPE - PORTÉE DE LA POMPE - CAUDAL DE LA BOMBA - CAUDAL DA BOMBA - RECOMMENDED PUMP DELIVERY 	100+50 l/m 26,3+13,1 gal/min	100+50 l/m 26,3+13,1 gal/min
<ul style="list-style-type: none"> - ANGOLO DI ROTAZIONE - SCHWENKBEREICH - ROTATION - GIRO - ROTAÇÃO - SLEWING ANGLE 	∞	∞	<ul style="list-style-type: none"> - CAPACITÀ SERBATOIO OLIO - FASSUNGSVERMÖGEN DEL ÖLBEHALTERS - CAPACITÉ RÉSERVOIR HUILE - CAPACIDAD DEL DEPOSITO DE ACEITE I - CAPACIDAD DO DEPÓSITO DE OLEO - OIL TANK CAPACITY 	650 l 170,9 gal	650 l 170,9 gal
<ul style="list-style-type: none"> - COPPIA MAX ROTAZIONE - MAX SCHWENKMOMENT - COUPLE MAXI. DE ROTATION - POTENCIA MÁXIMA DE GIRO - BINARIO MÁXIMO DE ROTAÇÃO - SLEWING TORQUE 	152710 daN.m	152710 daN.m	<ul style="list-style-type: none"> - VEICOLO MIN. P.T.T. - LKW MIN. G.G.W. - CAMION MIN. P.T.A.C. - CAMION PESO MIN. P.T.T. - P.B. MIN CAMION - TRUCK MIN. G.V.W 	32 t	32 t
<ul style="list-style-type: none"> - PRESSIONE MAX LAVORO - DRUCK - PRESSION - PRESSIÓN - PRESSÃO - MAX WORKING PRESSURE 	345 bar	345 bar	<ul style="list-style-type: none"> - PESO GRU - GEWICHT - POIDS - PESO - PESO - CRANE WEIGHT 	13975 kg	0 kg
	5003 psi	5003 psi		28110 lbs	0 lbs

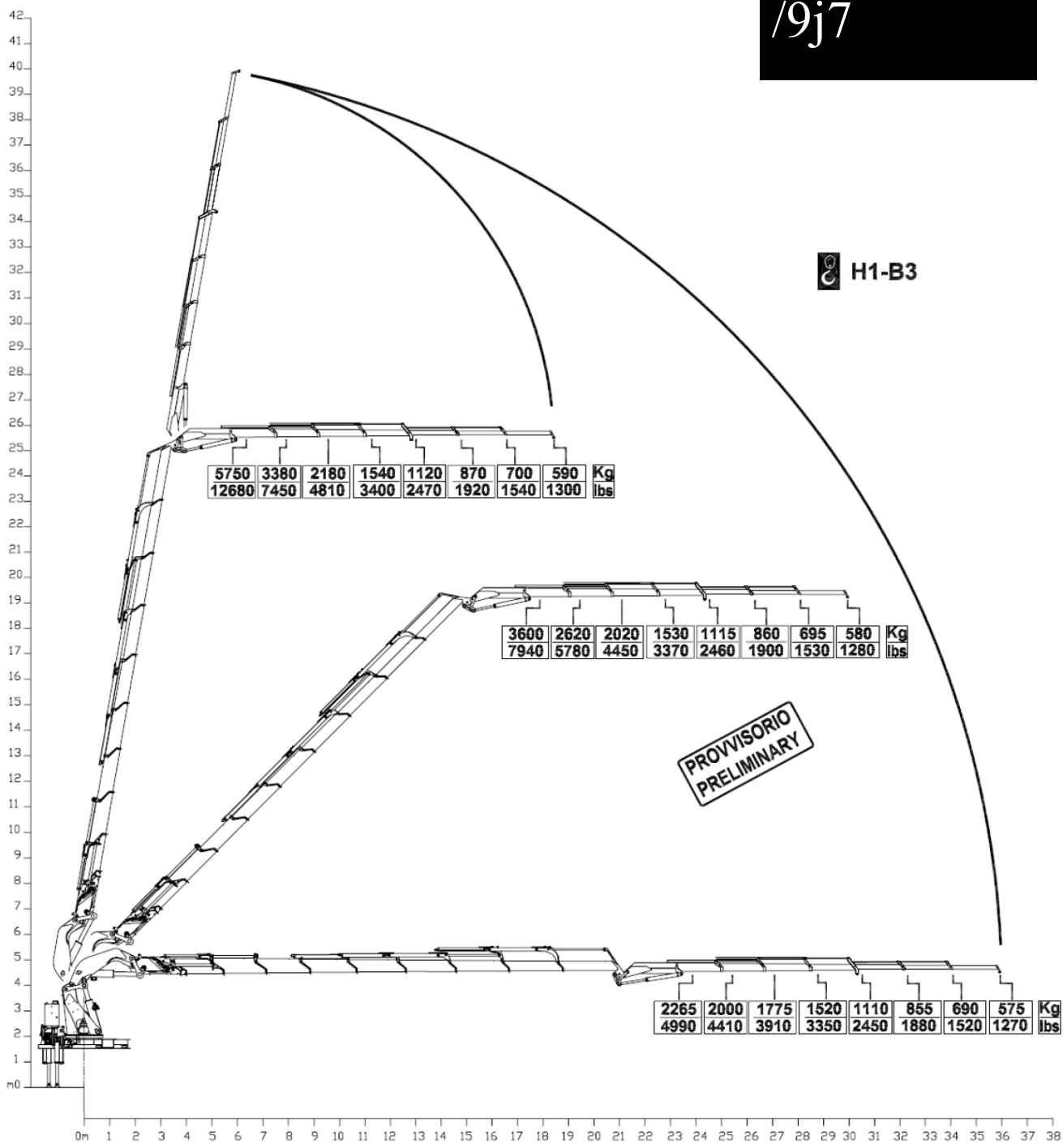
H1-B3

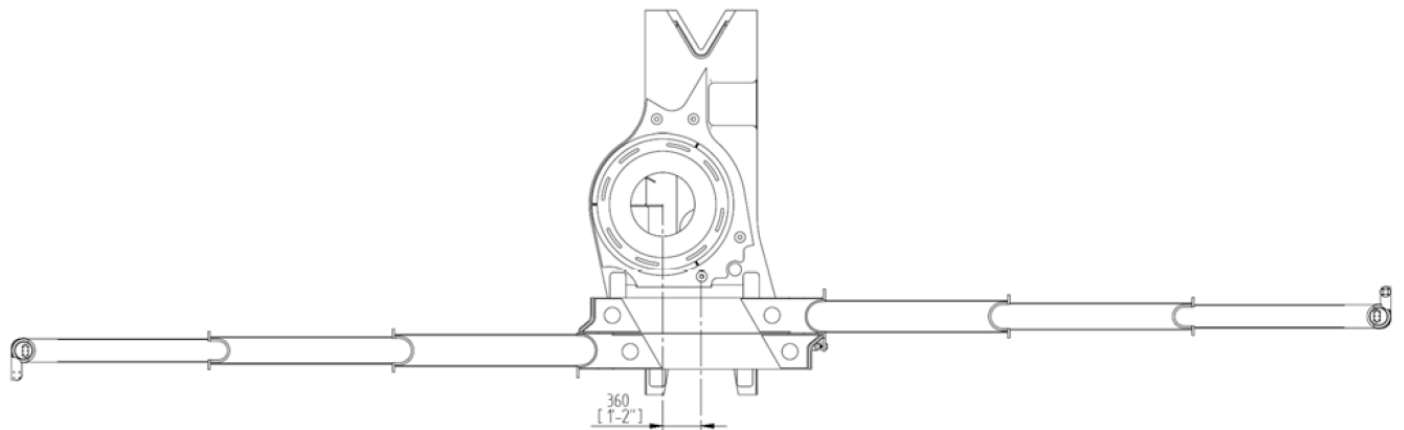
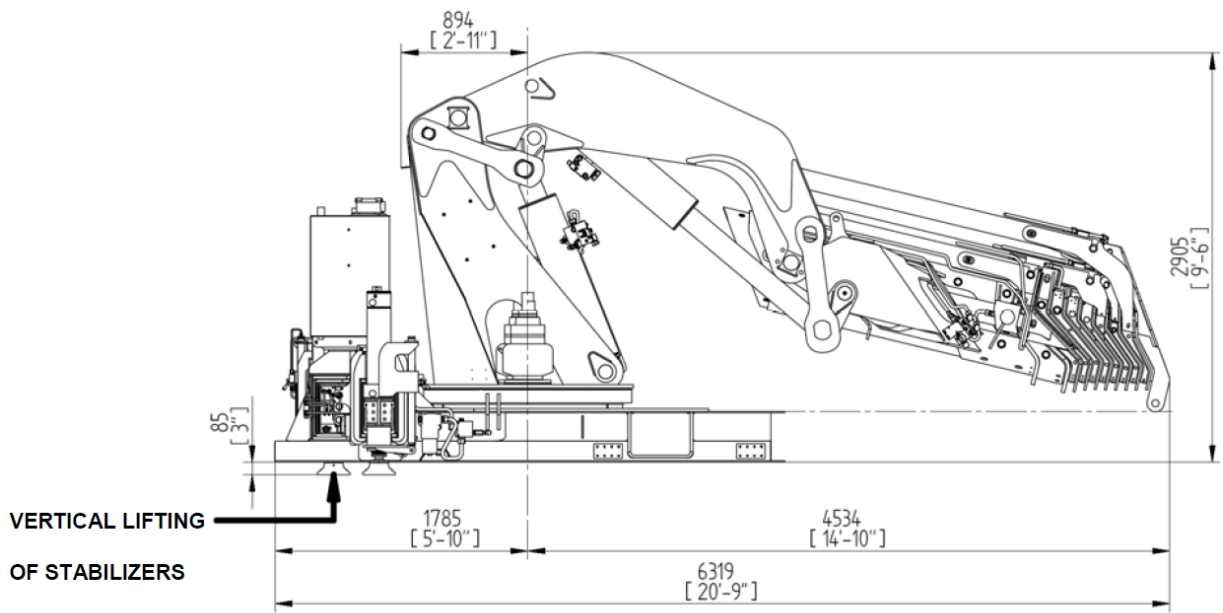
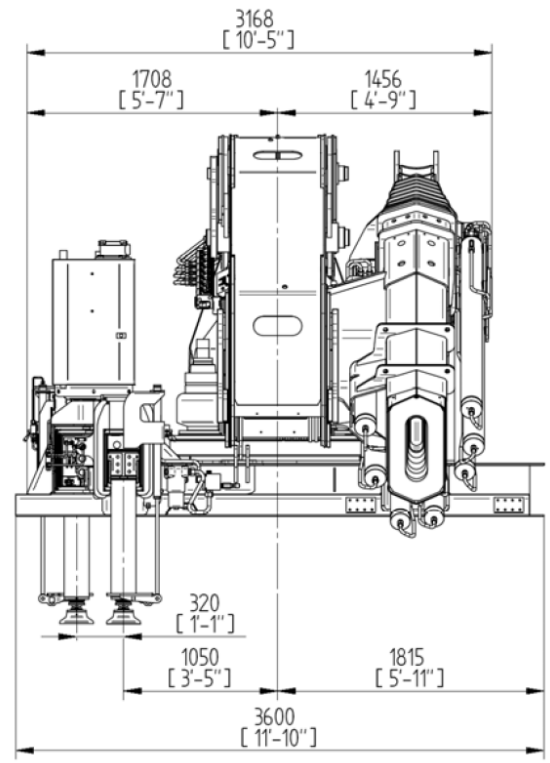
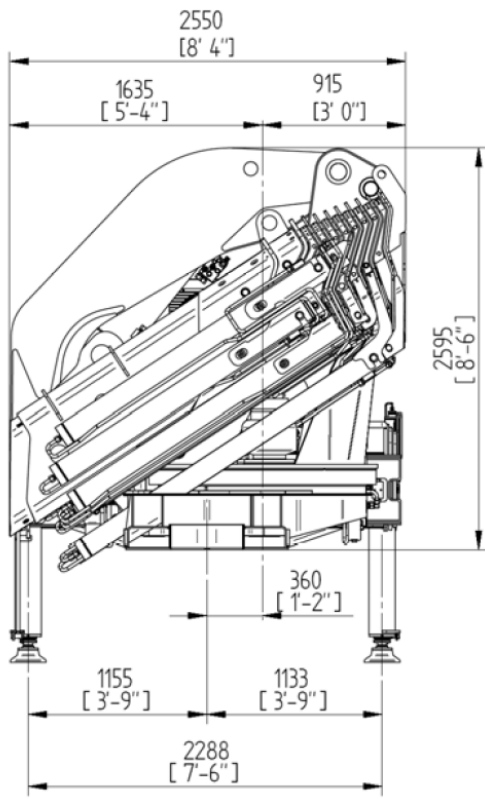


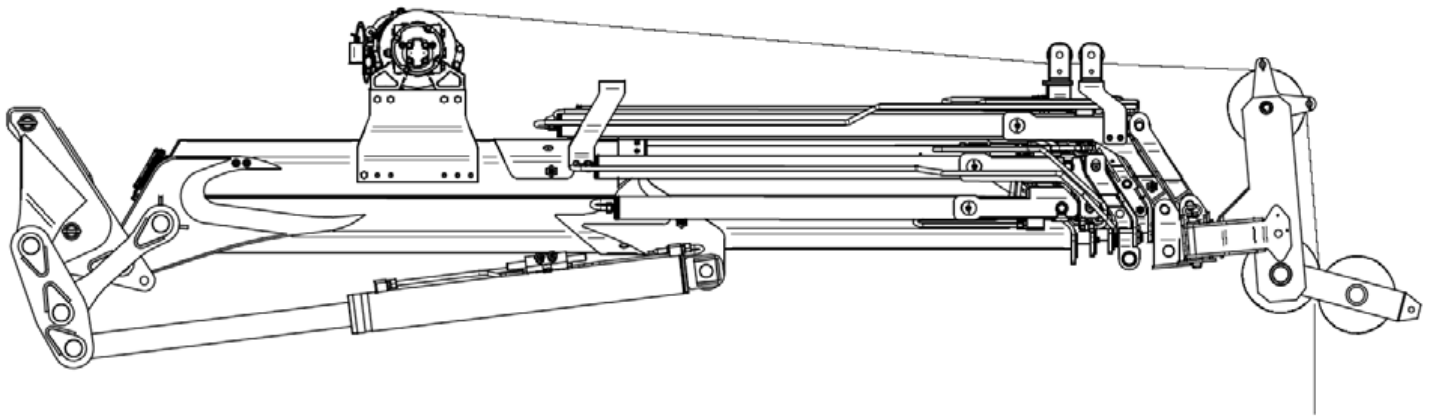
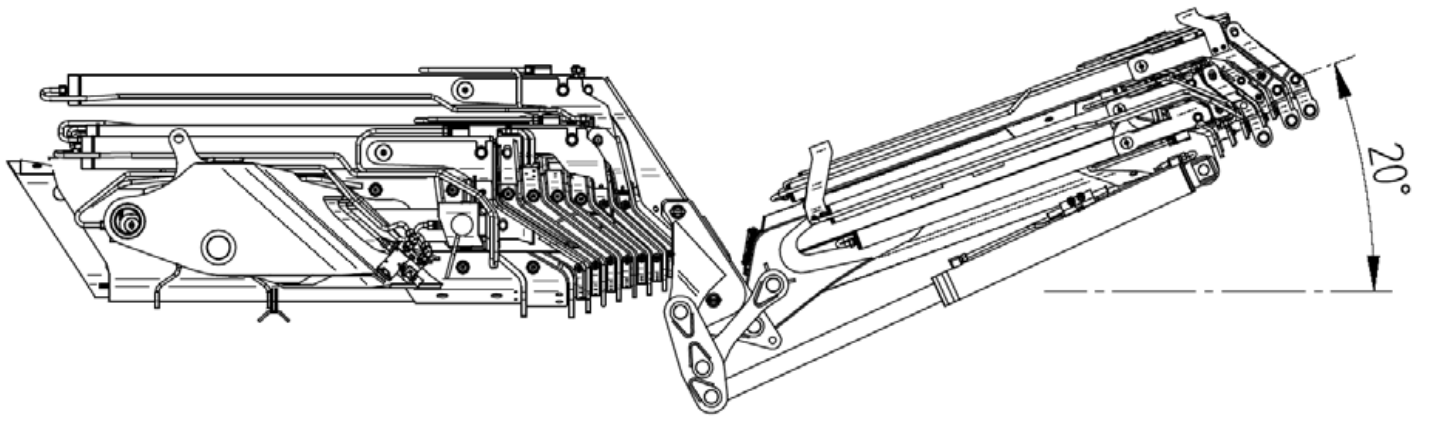
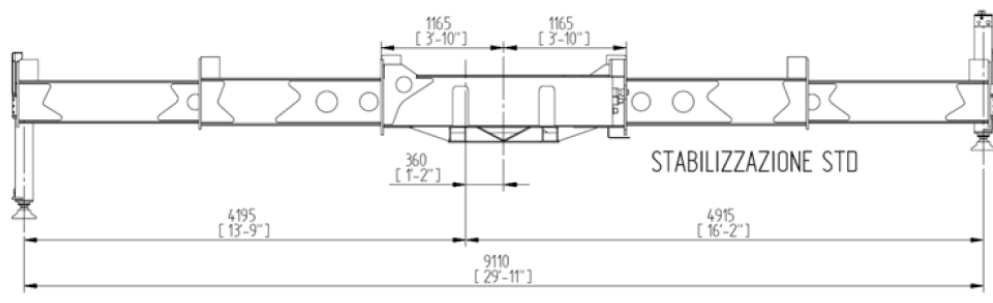
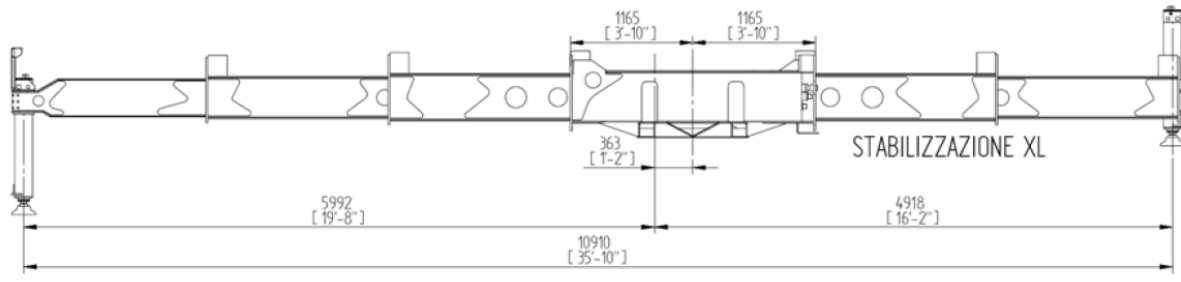
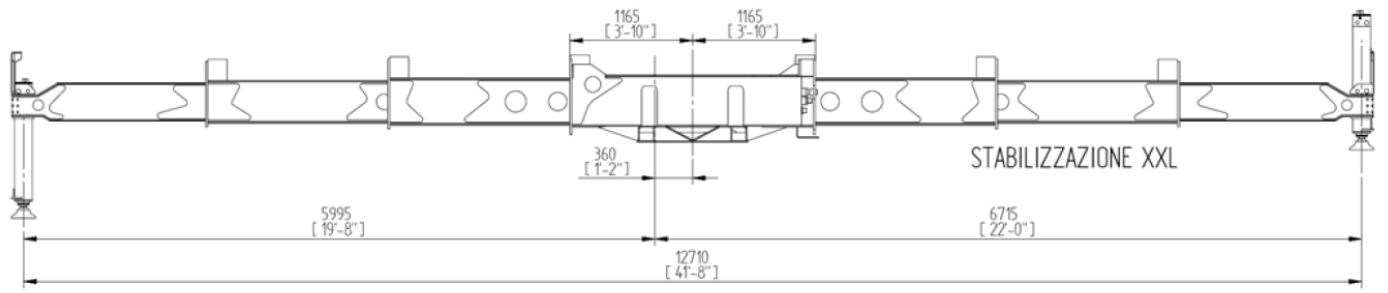
<ul style="list-style-type: none"> - MOMENTO MAX SOLLEVAMENTO - HUBMOMENT - COUPLE DE LEVAGE - MOMENTO - MOMENTO - MAX LIFTING MOMENT 	<p>1090 kN.m</p> <p>788563 lbs.ft</p>	<ul style="list-style-type: none"> - PORTATA POMPA OTTIMALE - FÖRDERMENGE DER PUMPE - PORTÉE DE LA POMPE - CAUDAL DE LA BOMBA - CAUDAL DA BOMBA - RECOMMENDED PUMP DELIVERY 	<p>100+50 l/m</p> <p>26,3+13,1 gal/min</p>
<ul style="list-style-type: none"> - ANGOLO DI ROTAZIONE - SCHWENKBEREICH - ROTATION - GIRO - ROTAÇÃO - SLEWING ANGLE 	<p>∞</p>	<ul style="list-style-type: none"> - CAPACITÀ SERBATOIO OLIO - FASSUNGSVERMÖGEN DEL ÖLBEHALTERS - CAPACITÉ RÉSERVOIR HUILE - CAPACIDAD DEL DEPOSITO DE ACEITE I - CAPACIDAD DO DEPÓSITO DE OLEO - OIL TANK CAPACITY 	<p>650 l</p> <p>170,9 gal</p>
<ul style="list-style-type: none"> - COPPIA MAX ROTAZIONE - MAX SCHWENKMOMENT - COUPLE MAXI. DE ROTATION - POTENCIA MÁXIMA DE GIRO - BINARIO MÁXIMO DE ROTAÇÃO - SLEWING TORQUE 	<p>152710 daN.m</p> <p>1104551 Psi</p>	<ul style="list-style-type: none"> - VEICOLO MIN. P.T.T. - LKW MIN. G.G.W. - CAMION MIN. P.T.A.C. - CAMION PESO MIN. P.T.T. - P.B. MIN CAMION - TRUCK MIN. G.V.W 	<p>32 t</p>
<ul style="list-style-type: none"> - PRESSIONE MAX LAVORO - DRUCK - PRESSION - PRESSIÓN - PRESSÃO - MAX WORKING PRESSURE 	<p>345 bar</p> <p>5003 psi</p>	<ul style="list-style-type: none"> - PESO GRU - GEWICHT - POIDS - PESO - PESO - CRANE WEIGHT 	<p>14400 kg</p> <p>31750 lbs</p>

19j7

H1-B3

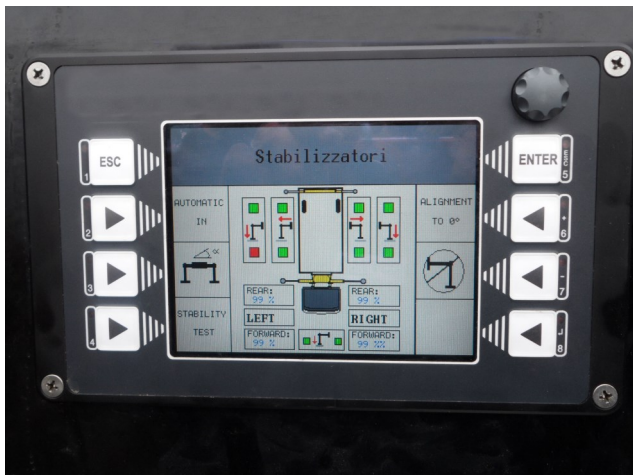






gru_truck cranes

www.pesci-cranes.com



Costruttore C.P.S. srl Via Emilia levante, 281
48014 Castel Bolognese (RA) - ITALIA
Tel. +39 0546 653833 Fax. +39 (0)546 656205
E-Mail info@pesci-cranes.com
www.pesci-cranes.com