

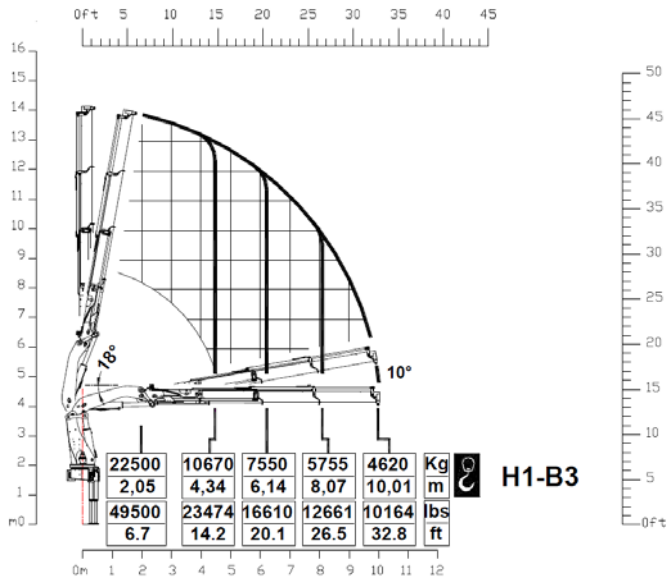
gru_truck cranes



Costruttore C.P.S. srl Via Emilia levante, 281
48014 Castel Bolognese (RA) - ITALIA
Tel. +39 (0)546 653833 Fax. +39 (0)546 656205
E-Mail info@pesci-cranes.com
www.pesci-cranes.com

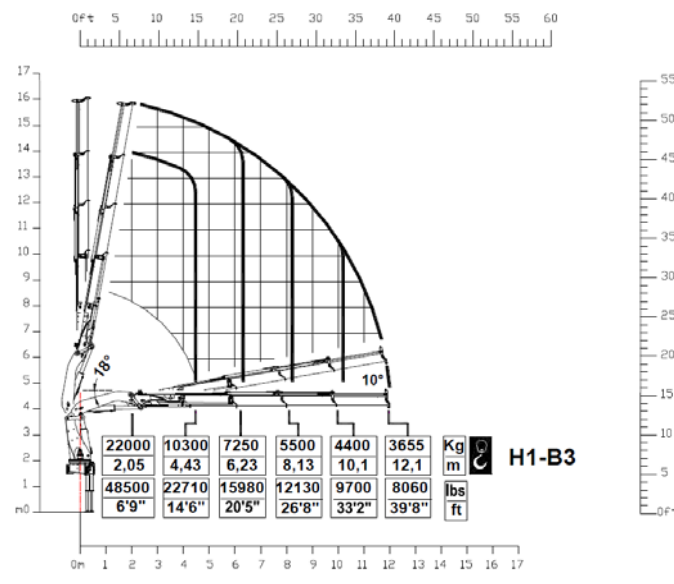
- > Scheda tecnica
- > Fiche technique
- > Technische daten
- > Technical features
- > Ficha tecnica
- > Folha de dados

13



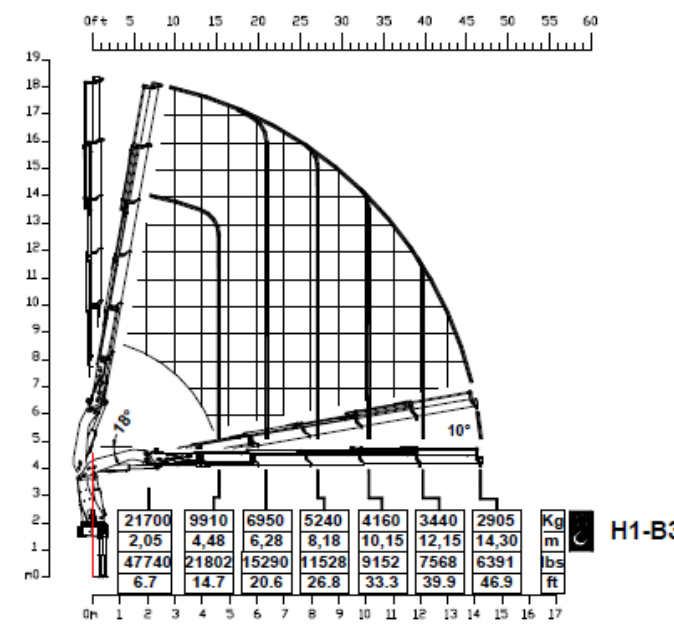
H1-B3

14



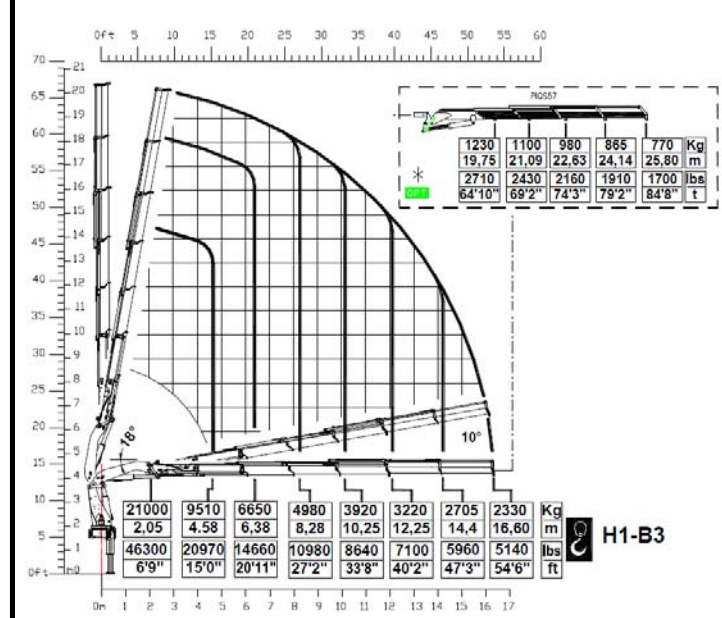
H1-B3

15



H1-B3

16



H1-B3

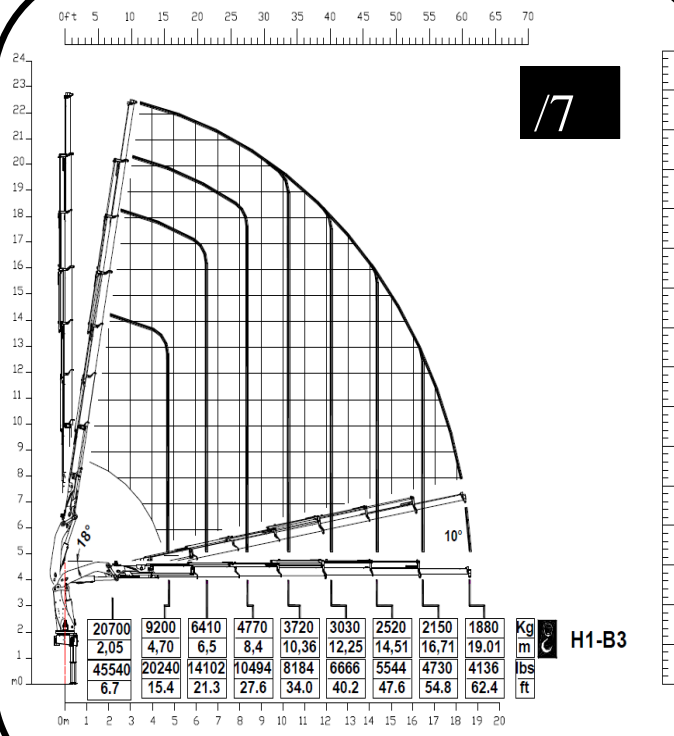
13 14 15 16 17 18

- MOMENTO MAX SOLLEVAMENTO - HUBMOMENT - COUPLE DE LEVAGE - MOMENTO - MOMENTO - MAX LIFTING MOMENT	455.6 kN.m	447.5 kN.m	435.7 kN.m	427 kN.m	424 kN.m	415 kN.m	- PORTATA POMPA OTTIMALE - FÖRDERMENGE DER PUMPE - PORTÉE DE LA POMPE - CAUDAL DE LA BOMBA - CAUDAL DA BOMBA - RECOMMENDED PUMP DELIVERY	70 l/m	70 l/m	70 l/m	70 l/m	70 l/m	70 l/m
- ANGOLO DI ROTAZIONE - SCHWENKBEREICH - ROTATION - GIRO - ROTAÇÃO - SLEWING ANGLE	∞	∞	∞	∞	∞	∞	- CAPACITÀ SERBATOIO OLIO - FASSUNGSVERMÖGEN DEL ÖLBEHALTERS - CAPACITÉ RÉSERVOIR HUILE - CAPACIDAD DEL DEPOSITO DE ACEITE I - CAPACIDAD DO DEPOSITO DE OLEO - OIL TANK CAPACITY	250 gal	250 gal	250 gal	250 gal	250 gal	250 gal
- COPPIA MAX ROTAZIONE - MAX SCHWENKMOMENT - COUPLE MAXI. DE ROTATION - POTENCIA MÁXIMA DE GIRO - BINARIO MÁXIMO DE ROTAZÃO - SLEWING TORQUE	5500 daN.m	5500 daN.m	5500 daN.m	5500 daN.m	5500 daN.m	5500 daN.m	- VEICOLO MIN. P.T.T. - LKW MIN. G.G.W. - CAMION MIN. P.T.A.C. - CAMION PESO MIN. P.T.T. - P.B. MIN CAMION - TRUCK MIN. G.V.W	24 t	24 t	24 t	24 t	24 t	24 t
- PRESSIONE MAX LAVORO - DRUCK - PRESSION - PRESSION - PRESSÃO - MAX WORKING PRESSURE	335 bar	335 bar	335 bar	335 bar	335 bar	335 bar	- PESO GRU - GEWICHT - POIDS - PESO - PESO - CRANE WEIGHT	4960 kg	5140 kg	53100 kg	5480 kg	5540 kg	5670 kg

13 14 15 16 17 18

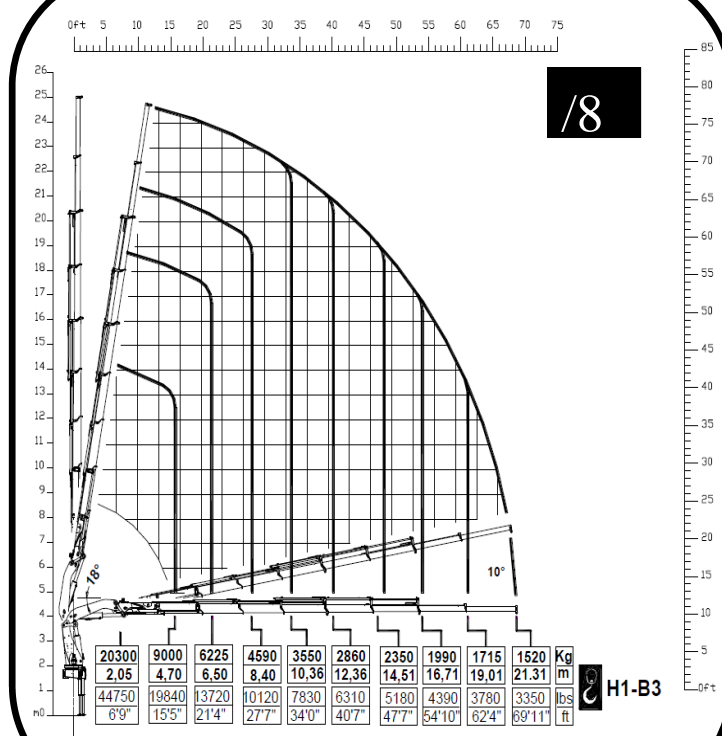
20700	9200	6410	4770	3720	3030	2520	2150	1880	Kg
2,05	4,70	6,5	8,4	10,36	12,25	14,51	16,71	19,01	m
45540	20240	14102	10494	8184	6666	5544	4730	4136	lbs
6.7	15.4	21.3	27.6	34.0	40.2	47.6	54.8	62.4	ft

17



H1-B3

18



H1-B3