



gru_truck cranes

www.pesci-cranes.com



PESCI

SE 78

QUALITY



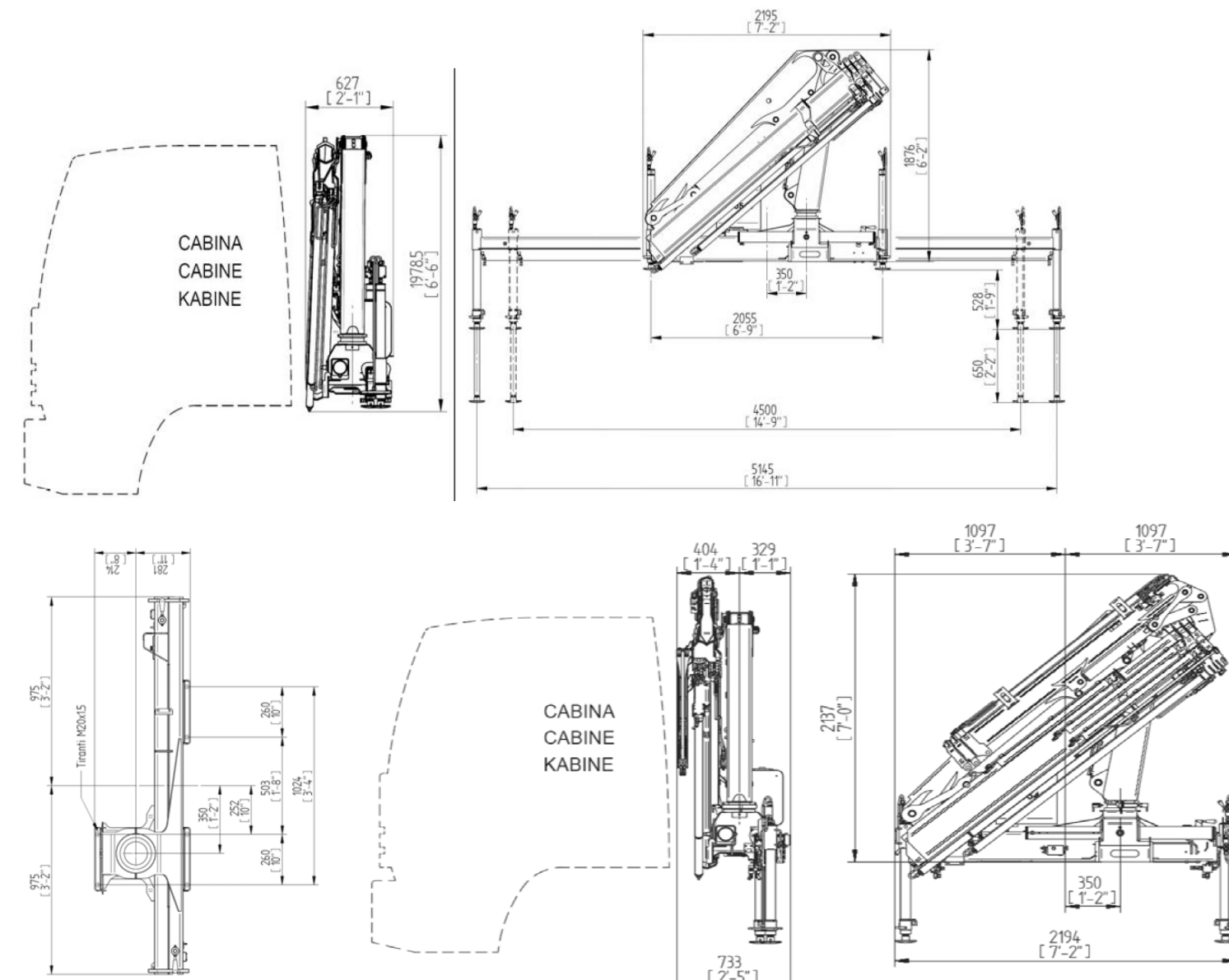
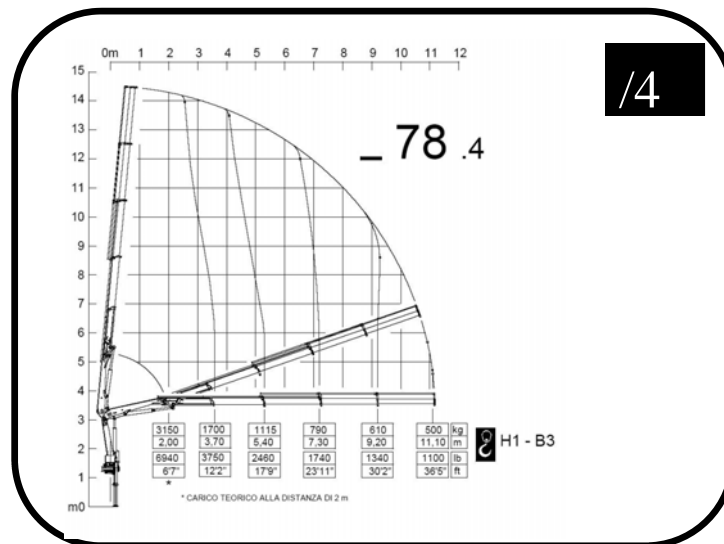
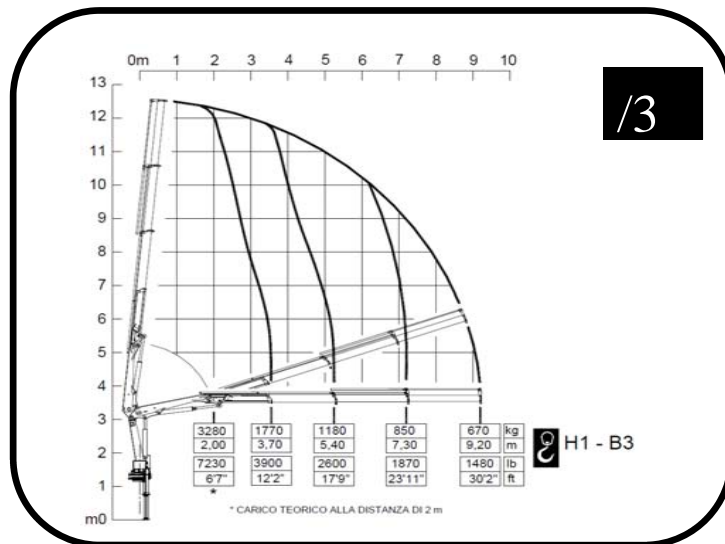
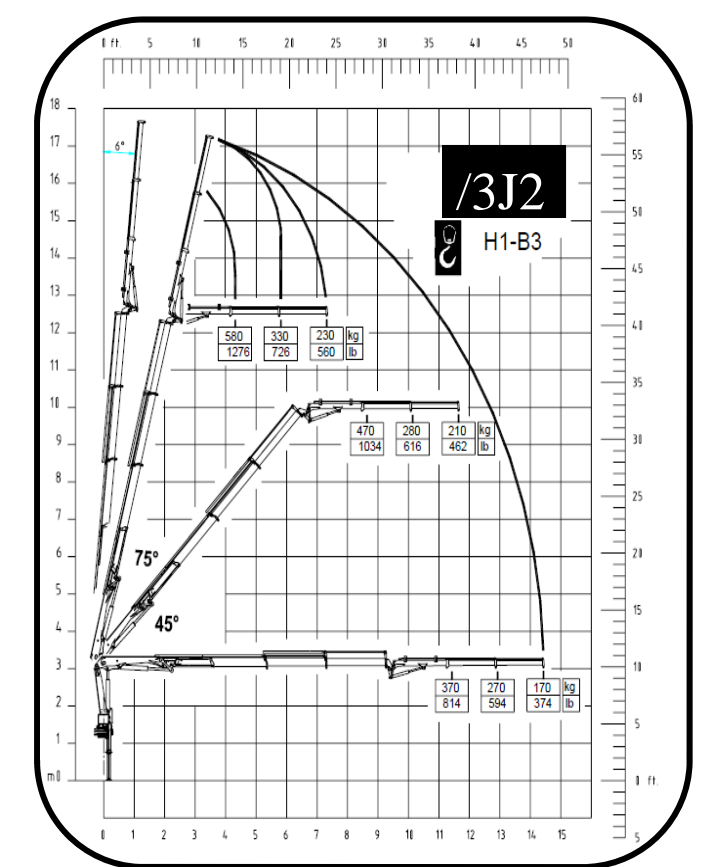
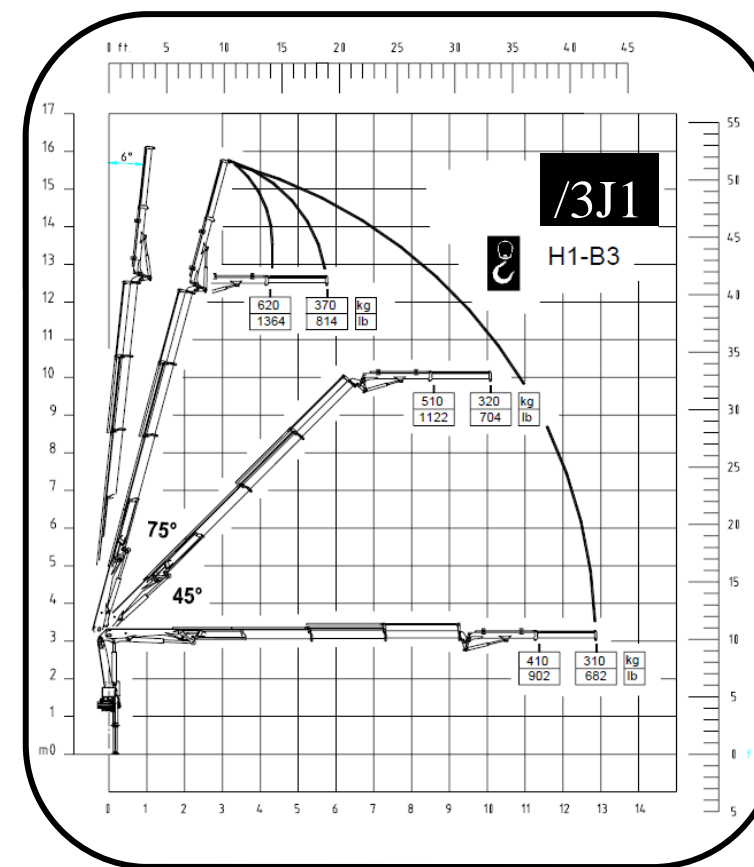
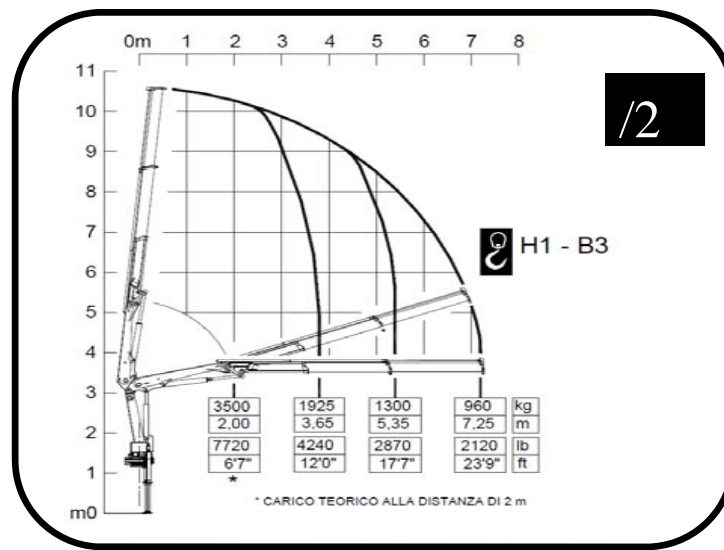
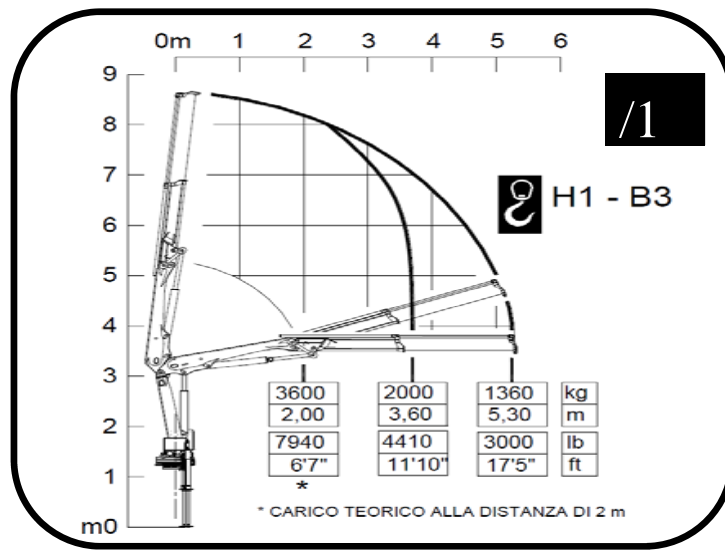
gru_truck cranes



- > Scheda tecnica
- > Fiche technique
- > Technische daten
- > Technical features
- > Ficha tecnica
- > Folha de dados



V. EMILIA 281 _ 48014 CASTEL BOLOGNESE (RA) _ ITALY
 Tel +39.0546.653.833 _ Fax +39.0546.656.205
 e-mail: info@pesci-cranes.com _ www.pesci-cranes.com



	1	2	3 /3J1 /3J2	4		1	2	3 /3J1 /3J2	4
- MOMENTO MAX SOLLEVAMENTO - HUBMOMENT - COUPLE DE LEVAGE - MOMENTO - MOMENTO - MAX LIFTING MOMENT	70,6 kN.m	68,93 kN.m	64,25 kN.m	54 kN.m	- PORTATA POMPA OTTIMALE - FÖRDERMENGE DER PUMPE - PORTÉE DE LA POMPE - CAUDAL DE LA BOMBA - CAUDAL DA BOMBA - RECOMMENDED PUMP DELIVERY	25 l/m	20 l/m	20 l/m	20 l/m
- ANGOLO DI ROTAZIONE - SCHWENKBEREICH - ROTATION - GIRO - ROTAÇÃO - SLEWING ANGLE	370°	370°	370°	370°	- CAPACITÀ SERBATOIO OLIO - FASSUNGSVERMÖGEN DEL ÖLBEHALTERS - CAPACITÉ RÉSERVOIR HUILE - CAPACIDAD DEL DEPOSITO DE ACEITE I - CAPACIDAD DO DEPÓSITO DE OLEO - OIL TANK CAPACITY	40 l	40 l	40 l	40 l
- COPPIA MAX ROTAZIONE - MAX SCHWENKMOMENT - COUPLE MAXI. DE ROTATION - POTENCIA MÁXIMA DE GIRO - BINARIO MÁXIMO DE ROTAÇÃO - SLEWING TORQUE	900 daN.m	900 daN.m	900 daN.m	900 daN.m	- VEICOLO MIN. P.T.T. - LKW MIN. G.G.W. - CAMION MIN. P.T.A.C. - CAMION PESO MIN. P.T.T. - P.B. MIN CAMION - TRUCK MIN. G.V.W	7,5 t	7,5 t	7,5 t	7,5 t
- PRESSIONE MAX LAVORO - DRUCK - PRESSION - PRESSÃO - MAX WORKING PRESSURE	300 bar	300 bar	300 bar	300 bar	- PESO GRU - GEWICHT - POIDS - PESO - PESO - CRANE WEIGHT	800 kg	870 kg	930 kg /3 1070 /32 1100	970 kg

I dati e le descrizioni del presente catalogo sono forniti a titolo indicativo e non sono vincolanti. PESCI si riserva il diritto di modificarli senza preavviso.
 Technical features are not binding. PESCI reserves itself the right to any modification without notice.