

sky500
CRANES



sky
CRANES®

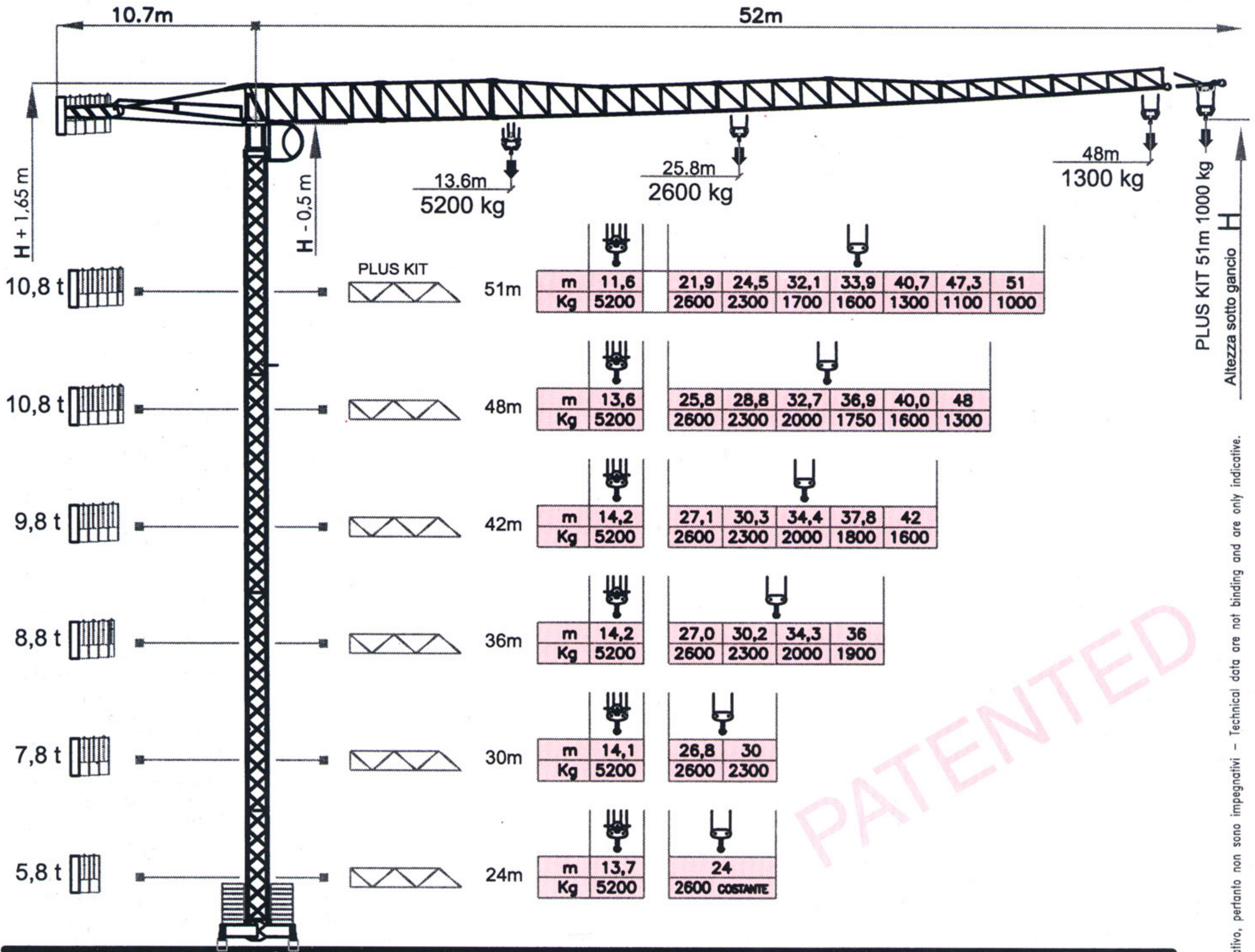




sky500

CRANES®

48 m - 1300 kg
PLUS KIT 51 m - 1000 kg



Height (m)	Weight (Kg)	13.6m	25.8m	48m	
51m	5200	21,9	24,5	32,1	
		2600	2300	1700	
		1600	1300	1100	
		1000			
48m	5200	25,8	28,8	32,7	
		2600	2300	2000	
		1750	1600	1300	48
42m	5200	27,1	30,3	34,4	
		2600	2300	2000	
		1800	1600	42	
36m	5200	27,0	30,2	34,3	
		2600	2300	2000	
		1900	36		
30m	5200	26,8	30		
		2600	2300		
24m	5200	24			
		2600	COSTANTE		

PATENTED

COMPOSIZIONE TORRE

MASTS COMPOSITION

COMPOSICION MASTIL

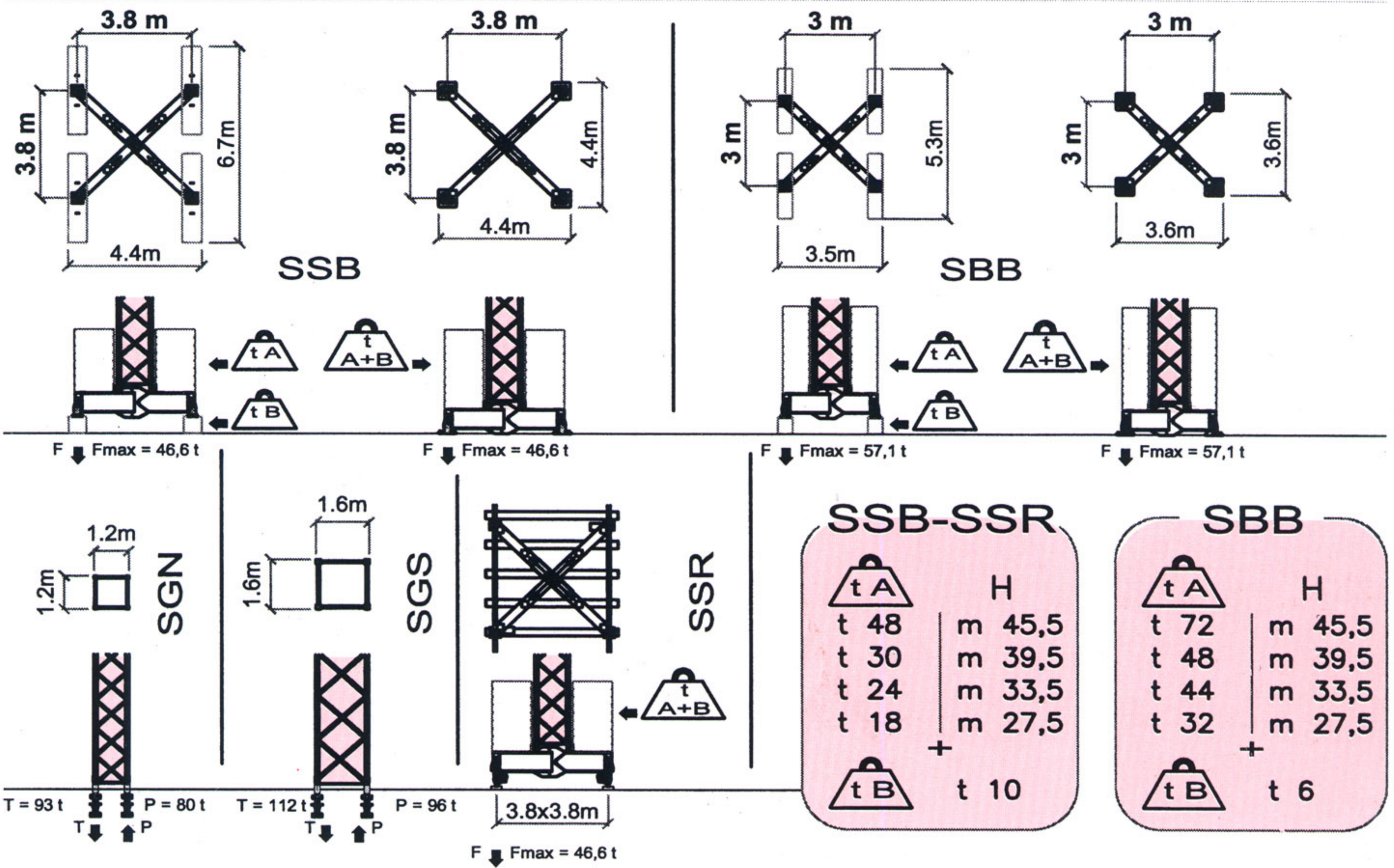
Configuration	14m	16m	18m	20m	22m	24m	26m	28m	30m	32m	34m	36m	38m	44m	51,5m	57,5m
H - SGN																
H - SSB / SBB																
H - SSB / SBB+																
ELEMENTS COMPOSITION	TNN	TND +TND +TNF	TND +TNN	TNF +TNN	TND +TND +TNN	TND +TNF +TNN	TNN +TNN	TND +TND +TNF +TNN	TND +TNN +TNN	TNF +TNN +TNN	TND +TND +TNN +TNN	TND +TNF +TNN +TNN	TNN +TNN +TNN	TNN +TNN +TNN	TNN +TNN +TNN	TNN +TNN +TNN
STANDARD	●	●		●			●			●			●	●	●	●

FEM 1.001-A3



2000/14

I dati e le misure hanno un valore indicativo, pertanto non sono impegnativi - Technical data are not binding and are only indicative.



GRUPPO MOTORE MOTOR GROUP GRUPO MOTOR	US 220 S	US 250 S	US 300 I	US 380 I																																						
DATI ELETTRICI ELECTRICAL DATA DATOS ELECTRICOS	400 V (+5% -5%) - 50 Hz 22 kW TRIFASE - THREE-PHASE	400 V (+5% -5%) - 50 Hz 27 kW TRIFASE - THREE-PHASE	400 V (+5% -5%) - 50 Hz 23 kW TRIFASE - THREE-PHASE	400 V (+5% -5%) - 50 Hz 31 kW TRIFASE - THREE-PHASE																																						
SOLLEVAMENTO HOISTING ELEVACIÓN	<table border="1"> <tr><td>5</td><td>2600</td><td>2,2</td></tr> <tr><td>21</td><td>2600</td><td>8,8</td></tr> <tr><td>42</td><td>1300</td><td>10,3</td></tr> </table>	5	2600	2,2	21	2600	8,8	42	1300	10,3	<table border="1"> <tr><td>6</td><td>2600</td><td>3,7</td></tr> <tr><td>25</td><td>2600</td><td>14,7</td></tr> <tr><td>50</td><td>1300</td><td>14,7</td></tr> </table>	6	2600	3,7	25	2600	14,7	50	1300	14,7	<table border="1"> <tr><td>5</td><td>2600</td><td rowspan="5">11</td></tr> <tr><td>23</td><td>2600</td></tr> <tr><td>44</td><td>1300</td></tr> <tr><td>52</td><td>650</td></tr> <tr><td>52</td><td>650</td></tr> </table>	5	2600	11	23	2600	44	1300	52	650	52	650	<table border="1"> <tr><td>7</td><td>2600</td><td rowspan="4">18</td></tr> <tr><td>32</td><td>2600</td></tr> <tr><td>62</td><td>1300</td></tr> <tr><td>76</td><td>650</td></tr> </table>	7	2600	18	32	2600	62	1300	76	650
5	2600	2,2																																								
21	2600	8,8																																								
42	1300	10,3																																								
6	2600	3,7																																								
25	2600	14,7																																								
50	1300	14,7																																								
5	2600	11																																								
23	2600																																									
44	1300																																									
52	650																																									
52	650																																									
7	2600	18																																								
32	2600																																									
62	1300																																									
76	650																																									
CARRELLO TROLLEY DISTRIBUCIÓN	<table border="1"> <tr><td>21</td><td>1,5</td></tr> <tr><td>42</td><td>2,2</td></tr> </table>	21	1,5	42	2,2	<table border="1"> <tr><td>21</td><td>1,5</td></tr> <tr><td>42</td><td>2,2</td></tr> </table>	21	1,5	42	2,2	<table border="1"> <tr><td>10</td><td rowspan="3">2,2</td></tr> <tr><td>26</td></tr> <tr><td>50</td></tr> </table>	10	2,2	26	50	<table border="1"> <tr><td>10</td><td rowspan="3">2,2</td></tr> <tr><td>26</td></tr> <tr><td>50</td></tr> </table>	10	2,2	26	50																						
21	1,5																																									
42	2,2																																									
21	1,5																																									
42	2,2																																									
10	2,2																																									
26																																										
50																																										
10	2,2																																									
26																																										
50																																										
ROTAZIONE SLEWING ORIENTACIÓN	0,3 - 0,9 rpm ELECTRONIC SENSITIVE SLEWING			2 x 55 Nm																																						
TRASLAZIONE RAIL CARRIL	17.0 m/min.			2 x 2,2 kW																																						

sky500 CRANES

- Montaggio con autogru di ridotte dimensioni, peso dei pezzi scomponibile per esigenze di trasporto fino a 2,4 t
- Possibilità di montaggio braccio completamente assemblato a terra completo di funi, carrello e argani
- Possibilità di montaggio braccio a singoli elementi senza necessità di spazio al suolo
- Scelta di gruppi argano con o senza inverter e tiro in 4° taglia con raddoppio della portata
- Scelta di gruppi base con basamenti autolivellanti o elementi torre annegati
- Rotazione elettronica a controllo diretto per accostamenti facilitati
- Grande altezza utile con gru libera da ancoraggi
- Zincatura torre e controfrecchia di serie

- Mounting by means of a small dimensions truck crane, disassembling of crane groups not exceeding 2,4 t
- Possibility of mounting the jib completely assembled on the ground, comprising the ropes, trolley and winches
- Possibility of mounting the jib in single elements without any ground space needed
- Selection of the winch version with or without frequency inverter and 4-part reeving, doubling the load capacity
- Selection of the base groups either with self-levelling bases or embedded tower elements
- Electronic slewing device with direct movement control for easy approaching
- Great useful height with crane free from anchoring
- Galvanization for tower elements and counterjib as a standard

Sky 500



MACCHINA COSTRUITA IN ITALIA CON MATERIALI E COMPONENTI EUROPEI



the crane professionals

sky
CRANES®

www.grudalbe.com

GRU DALBE srl

via Europa, 84 - 21015 Lonate P. - VA - Italy

Tel +39 03 31 66 84 25 r.a.

Fax +39 03 31 66 87 62

db@grudalbe.com

AGENTE DI ZONA

