

## COMFORTABLE WORKPLACE

The GIANT wheel loader is equipped with ROPS / FOPS safety roof, air suspended seat with armrests, adjustable steering column, safety doors, adjustable dashboard, vibration-damped workplace.

Also available with:

Safetyroof Deluxe: 2 working lights , 2 rear working lights, window in the front and window rear with wipers and 2 mirrors.

Cabin: enclosed cab with heating and ventilation, radio mp3 player, insulation package, 2 working lights front, 2 rear working lights, mirrors, front and rear wiper.



## TYRE CHOICE



12.0x75-18 TR11  
(94x30 cm)

140 cm machine width



15x55-17 AS  
(85x39 cm)

152 cm machine width



19x45-17 AS  
(86x49 cm)

162 cm machine width



500x40-17.5 Flota 3  
(88x50 cm)

165 cm machine width



445x45-19.5 Kargo  
(94x45 cm)

165 cm machine width



500x45-20 AS  
(98x48 cm)

165 cm machine width

## WHEEL LOADERS

GIANT wheel loaders are totally designed and produced in own management in Oisterwijk (the Netherlands). In 2009 TOBROCO-GIANT has started with the development for new models for the existing range. These new models will replace the existing ones. For development TOBROCO-GIANT is using a sophisticated 3-dimensional design program. Thus before taken a machine in production, it's performance can be tested already. During the development of the new models TOBROCO takes care of the demands and needs of their customers. TOBROCO is a specialist in compact wheel loaders.

In the modern plant in Holland they build the GIANT wheel loaders. We work with the best suppliers: Kubota, Rexroth. GIANT is robust, durable and quality made in Holland! Also TOBROCO-GIANT offers you a very big variety of implements. The majority of these implements is designed and produced by TOBROCO-GIANT, and because of this, the implements are optimally adapted for your GIANT, which is more efficient this way.



### TOBROCO-GIANT

Industrielaan 2,  
5061 KC Oisterwijk (Netherlands)  
Tel.: +31 (0)13-5211212  
Fax: +31 (0)13-5234045  
Internet: [www.tobroco-giant.com](http://www.tobroco-giant.com)  
E-Mail: [info@tobroco.com](mailto:info@tobroco.com)



All technical data in this brochure refer to series models that have been tested under operating conditions typical of Central Europe and describe their standard functions. Specifications and their modes of functionality as well as accessories listed in this brochure depend on the individual model and on the options available with a particular product as well as the statutory requirements of the country of sale. Illustrations used in this brochure may show products that have not been mentioned or that are not available as series production machines. The descriptions, illustrations, weights and technical data published herein are non-binding in nature and represent the technical status at the time the document went to press. Because of ongoing development, we reserve the right to make changes, without prior notice, to the design, specification, visual appearance and technology of our products. Should you require special functions that would be available only by using additional components and/or under special circumstances, please feel free to contact us. We will be happy to answer any questions you may have and to provide further information regarding whether and under what conditions applying to the product and the target environment such special functions might be feasible. If you have any concerns about the load capacity or operation of our products in certain working conditions or environments, we recommend that you perform a test run under controlled conditions. Despite meticulous attention to detail, we cannot exclude the possibility that our products may not conform to illustrations or stated dimensions, or that errors may have occurred in calculation or during printing, or that the information given here may be incomplete. Consequently, we do not accept liability for the accuracy or completeness of the information supplied in this brochure. All matters relating to our product warranty are contained within our General Terms and Conditions. We expressly decline to provide additional guarantees. Any liability over and above that contained within our General Terms and Conditions is excluded.

# GIANT

Team TOBROCO

Industrielaan 2, 5061 KC Oisterwijk

Tel.: +31 (0)13-5211212

Fax: +31 (0)13-5234045

Internet: [www.tobroco-giant.com](http://www.tobroco-giant.com)

E-Mail: [info@tobroco.com](mailto:info@tobroco.com)

V4502T TELE  
V5003 TELE  
V5003 TELE HD



## TELEHANDLERS

Flexible, strong and comfortable jack of all trades



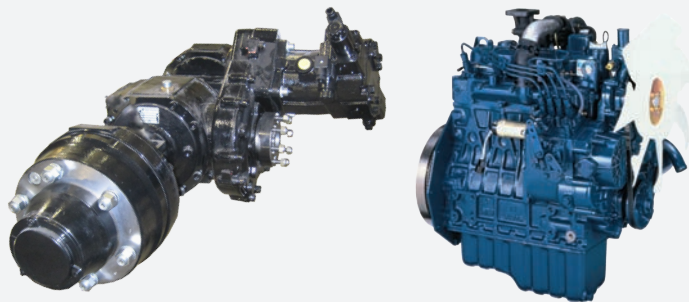


# WHEEL LOADERS

To full fill the needs and demands of her customers TOBROCO-GIANT offers a wide range of wheel loaders. This range consists out of 30 different types of loaders with a service weight between 1000 kg and 6000 kg. In this leaflet, we will show you our special V4502T TELE, V5003 TELE and V5003 TELE HD. This machines are characterized by the telescopic lifting arm. For further information about other types and implements we refer to our other leaflets or our website ([www.tobroco-giant.com](http://www.tobroco-giant.com)).

## QUALITY

The heart of the machine has top class components Kubota diesel engine, Bosch Rexroth hydraulic pumps, heavy drive shaft line, Common planetary axles, heavy duty 14 ton with 100% electr. differential lock, construction and assembly in the Dutch Oisterwijk ensure that the GIANT wheel loaders economical clean and super reliable.

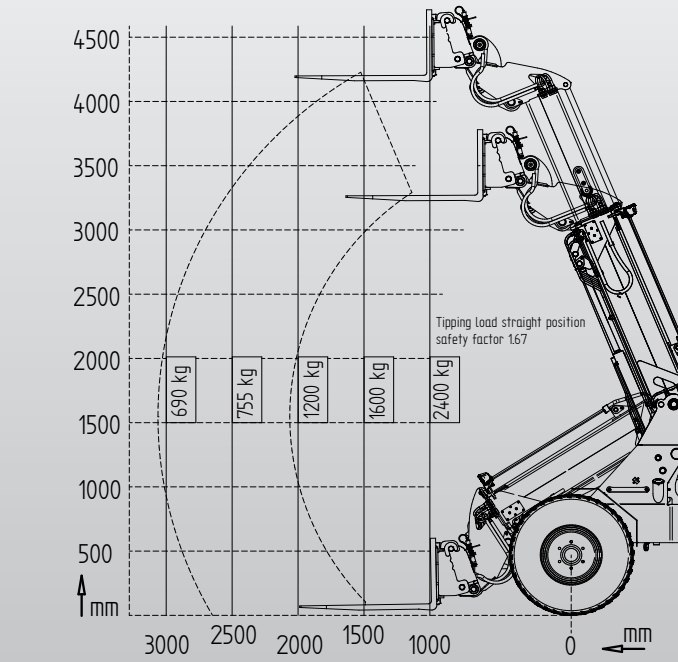
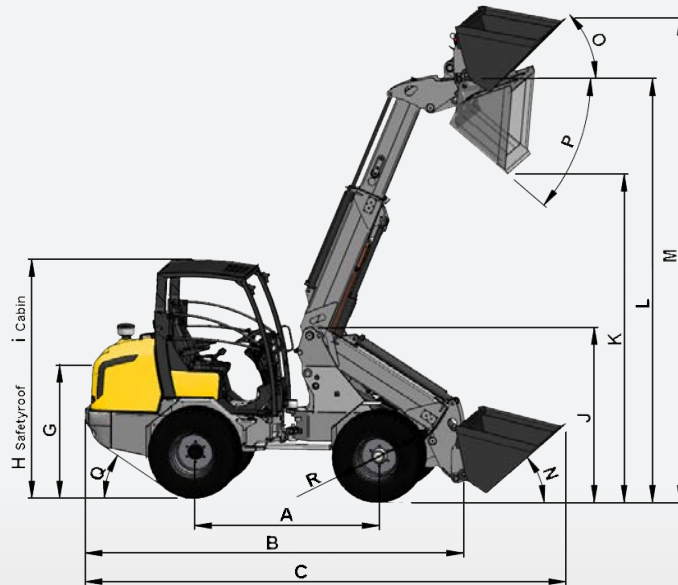
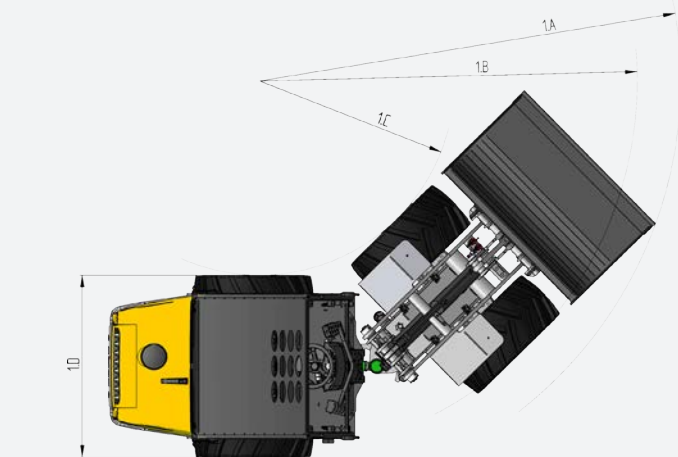


**V4502T TELE & V5003 TELE**  
Modern Kubota diesel engine, Bosch Rexroth hydraulics, Heavy 12 tons planetary drive-line with highspeed, 0-25 km/h, 100% electric spider differential.



**V5003 TELE HD**  
Modern Kubota diesel engine, Bosch Rexroth hydraulics, Heavy 14 tons planetary drive-line with highspeed, 0-28 km/h, 100% electric spider differential.

# TECHNICAL SPECIFICATIONS



|                           | V4502T TELE   | V5003 TELE  | V5003 TELE HD   |
|---------------------------|---|---|---|
| Engine                    | 4 cylinder Kubota Turbo 45 pk / 33 kW   | 4 cylinder Kubota 50 pk / 36 kW   | 4 cylinder Kubota 50 pk / 36 kW   |
| Transmission              | Hydrostatic 4 wheel drive with automotive control. 12 Tons axles with 100% electrical differential lock on both axles. Heavy planetary end drive. | Hydrostatic 4 wheel drive with automotive control. 12 Tons axles with 100% electrical differential lock on both axles. Heavy planetary end drive. | Hydrostatic 4 wheel drive with automotive control. 14 Tons axles with 100% electrical differential lock on both axles. Heavy planetary end drive. |
| Driving speed             | 0-10 km/h 0-25 km/h   | 0-10 km/h 0-25 km/h   | 0-10 km/h 0-28 km/h   |
| Working hydraulics        | 51 L/min (215 bar)  | 70 L/min (220 bar)  | 67.5 L/min (215 bar)  |
| Tipping load <sup>1</sup> | 1.000 kg - 2.000 kg   | 1.000 kg - 2.000 kg   | 1.000 kg - 2.000 kg   |
| Lift capacity             | 2.000 kg  | 2.000 kg  | 2.000 kg  |
| Weight <sup>2</sup>       | 3.650 kg  | 3.750 kg  | 3.850 kg  |
| Parking brake             | Drum brake / mechanical   | Drum brake / mechanical   | Drum brake / mechanical   |
| Diesel / Oil capacity     | 82 L / 83 L   | 82 L / 83 L   | 82 L / 83 L   |
| Attachment bracket        | GIANT STANDARD Hydraulic  | GIANT STANDARD Hydraulic  | GIANT STANDARD Hydraulic  |
| Tyres (Vehicle width)     | 11.5/80x15.3 AS (1.340 mm)  | 11.5/80x15.3 AS (1.340 mm)  | 12.0/75-18 TR-11 (1.400 mm)   |

|   | V4502T TELE   | V5003 TELE    | V5003 TELE HD |
|---|---------------|---------------|---------------|
| A Wheel base                            | 1.911         | 1.911         | 1.911         |
| B Total lenght without bucket           | 3.997         | 3.997         | 3.997         |
| C Total lenght with bucket              | 4.818         | 4.818         | 4.818         |
| G Seat height                           | 1.225         | 1.225         | 1.270         |
| H Max. height with ROPS/FOPS safetyroof | 2.275         | 2.275         | 2.320         |
| I Max. height with cabin                | 2.242         | 2.242         | 2.287         |
| J Height frontframe                     | 1.736         | 1.736         | 1.781         |
| K Max. dump bucket                      | 2.477 / 3.102 | 2.477 / 3.102 | 2.522 / 3.147 |
| L Max. bucket pin height                | 3.379 / 4.312 | 3.379 / 4.312 | 3.424 / 4.357 |
| M Height with bucket                    | 4.004 / 4.937 | 4.004 / 4.937 | 4.049 / 4.982 |
| N Roll back angle ground level          | 41°           | 41°           | 41°           |
| O Roll back angle                       | 47°           | 47°           | 47°           |
| P Max. dump angle                       | 40°           | 40°           | 40°           |
| Q Max. drive angle                      | 30°           | 30°           | 30°           |
| R Diameter standaard tyre               | Ø 850         | Ø 850         | Ø 940         |
| 1A Maximum radius                       | 3.281         | 3.281         | 3.281         |
| 1B Outer turning radius                 | 2.859         | 2.859         | 2.859         |
| 1C Inner turning radius                 | 1.476         | 1.476         | 1.476         |
| 1D Total width (until)                  | 1.340         | 1.340         | 1.400         |

Sizes in mm. Measured with standard tyres. Data is subject to change.  
<sup>1</sup> Measured on hinge point in straight position.  
<sup>2</sup> Measured with standard bucket and driver.

Looking for an attachment geared towards your particular situation?

## WORKING HEIGHT

With a lifting height of 4,25 meters, the TELE machines easily be used for all loading and unloading activities.

## TIPPINGLOAD

With the mast lowered the tippingload is 2.000 kg on the forks, with the mast retracted the tipping load is 1.000 kg on the palletforks.

